

# Canal Zone Study Group 40<sup>th</sup> Mail Sale

Closing Wednesday , November 15, 2017



Lot 8



Lot 29



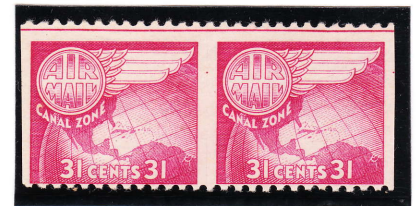
Lot 41



Lot 111



Lot 75



Lot 142



Lot 211

## Table of Contents

Ordinary Stamps	1	First Day Covers	9
Air Mail Stamps	4	First Flight Covers	9
Postage Dues	4	Covers by Scott #	10
Plate # Blocks & Singles	4	Other Covers	14
PSN Perfins Stamps & Covers	5	APO	14
Official Perf Ps, incl. Covers	5	Censored	14
Air Mail Officials	6	Sea Post	14
Officials	6	Paquebot	14
Proofs/Essays/Specimens	6	Ship Cancels	14
Precancelled Stamps	6	Maiden Voyage	14
Revenues	7	Special Events	14
Official Seals & TB Seals	8	Official Business & Permit Mail	15
Postal Stationery Envelopes	8	Inbound Covers to CZ	15
Postal Stationery Cards	9	Postal History Large Lots	15
P.O. Forms & CZPS Announcement Cards	15		
Picture Post Cards & Souvenir Folders	16		
Philatelic & Historical Literature, Documents	17		

**CANAL ZONE STUDY GROUP MAIL SALE #40**

LOT No.	DESCRIPTION	VALUE
<b>ORDINARY STAMPS</b>		
1. *	2 F-VF OG APS cert states "disturbed OG"	Sc. \$ 300 <b>Ph</b>
2. *	4 VF OG HM	Sc. \$ 40
3. *	6 F-VF OG LH	Sc. \$ 95
4. *	6 VF+ OG H	Sc. \$ 95
5. *	7 F+ TG sm spot on gum	Sc. \$ 150
6. */**	4-8 F-VF to VF sl. gum dist from interleaving, appears NH, nice complete set	Sc. \$ 460 <b>Ph</b>
7. * B6	9b "ZONE" antique TL stamp in inscription blk of 6, TG, sl. toning, F-VF	Sc. \$ 84+
8. o	9d "CANAL ZONE" double, light cancel, sl. rnd UL cnr, F-VF only 20 known	Sc. \$ 2000 <b>Ph</b>
9. o	9var broken "L" in "CANAL" (reads CANAI), light cancel, VF	Est. \$ 10
10. (*)	10var dropped "ON" in "ZONE", unused, no gum, sl. rnd UR cnr, F-VF	Sc. \$ 400 <b>Ph</b>
10A *	11b "PANAMA" inverted, bar at B, F-VF, LH APS Cert	Sc. \$ 600 <b>Ph</b>
11. *	11var inverted "M" in R PANAMA, w/ o'print shifted L, F-VF OG HR	Sc. \$ 40
12. */** B4	11vars incl CZSG 11(2), 11.1 (inv M in L PANAMA), 11.2 (R PANAMA 16mm) VF Block, OG, 11.2 is NH, others HM	Sc. \$ 104
13. * B4	11vars similar lot, but w/ selvedge @ R, F+-VF, OG HM	Sc. \$ 104
14. * B4	11var (CZSG 11.1) inv M in R PANAMA LL(pos 24) TG, HR sp UL, F-VF	Sc. \$ 66
15. * B4	12a "CANAL" antique, LL stamp in blk of 4, TG, F+	Sc. \$ 102
16. * B4	12b,12var "ZONE" antique (UL), "PAMANA" reading UP (LR), VG-F TG	Sc. \$ 166 <b>Ph</b>
17. o	12b used "ZONE" antique, F	Sc. \$ 65
18. * B4	12vars "PAMANA" up LR stp, dbl-line "N" LL stp, pos 43,44,53,54, F-VF TG	Sc. \$ 99+
19. * B4	12vars "PAMANA" up UL stp, brk "E" UR stp, pos 54,55,64,65, TG VF	Sc. \$ 99+
20. * B4	12vars similar lot, F-VF HR top, sl. dist gum bot	Sc. \$ 99+
21. * B4	13 (CZSG 13.D - carmine o'prt) VG-F+ sl TG	Sc. \$ 100
22. o	13b "ZONE" antique used, F+	Sc. \$ 160 <b>Ph</b>
23. *	13var "PAMANA" reading down, F-VF VLH	Sc. \$ 200 <b>Ph</b>
24. *	13var (CZSG 13.10) L PANAMA touches bar F-VF TG	Sc. \$ 200 <b>Ph</b>
25.*/** B4	14 BL margin blk, nat SE B, pos 81,82 Ty A "8" NH, pos 91,92 Ty B "8" HM F+	Sc. \$ 180
26. *	14c rose brown o'prt F-VF LH	Sc. \$ 37.50
27. * pr	14c rose brown o'prt vert pr nat SE B, Ty A "8" (T), Ty B "8" (B) F-VF sl TG	Sc. \$ 75+
28. * B4	14c rose brown BL margin blk, nat SE B, pos 81,82 Ty A "8", pos 91,92 Ty B "8" F-VF TG	Sc. \$ 180+ <b>Ph</b>
29. *	15 F-F+ TG PFC cert. the KEY regularly issued CZ stamp	Sc. \$ 2000 <b>Ph</b>
30. * 2B4	16a (CZSG 16a.2 spaced Z_O; 16a.3 narrow 1 ct) latter w/part imprt @ R, F TG	Est. \$ 20+
31. * B4	16b vars in inscr blk (CZSG 16b.1 C_A spaced pos 50; 16b.9 P_A spaced pos 49) F-VF TG	Est. \$ 20+
32. * Str 3	16b var (CZSG 16b.18 work-up before "1") T stp in V str 3 VG-F TG	Est. \$ 10
33. * B4	18var pos 34,35,44,45 LL stp has prominent brk "A" in R PANAMA F-VF TG	Sc. \$ 225 <b>Ph</b>
34. * B4	18b PANAMAs read down & up pos 1 in L margin blk, F-VF, tissue adheres	Sc. \$ 310 <b>Ph</b>
35. * B4	18var (CZSG 18.1a PANAMAs 15.5 mm in B pr of inscr blk) pos 49,50,59,60 G-F centering TG	Sc. \$ 280 <b>Ph</b>
36. * B4	18var (CZSG 18.1a PANAMAs 15.5 mm in T pr), brk "E" LL stp, F-VF TG	Sc. \$ 280 <b>Ph</b>
37. * B4	20 TL stp has brk 2 <sup>nd</sup> A and brk E, G-F centering, TG, pn on back	Sc. \$ 160
38. * pr	20a "CANAL" antique T stp in V pr, F-VF HM	Sc. \$ 235 <b>Ph</b>
38A* 2	Printer's Waste - stamps used for #14,20, but no "CANAL ZONE" o'prt F-VF TGEst.	\$ 18
39. * B4	21var <u>unlisted low transfer</u> of UR stp in blk. TG diagonal gum bends, sp R o/w F	Sc. \$ 135 <b>Ph</b>
40.*/** B4	22 hard paper, 7.2 mm sp, T imprint blk of 4, perfs reinf @ T others NH VF-XF	Est. \$ 10+

**CANAL ZONE STUDY GROUP MAIL SALE #40**

<b>LOT No.</b>	<b>DESCRIPTION</b>	<b>VALUE</b>
41. * Pr	22a VF TG Horiz Pair <u>Imperf between</u> , PFC for blk, this the B pr. Only 50 pairs	Sc. \$ 1100 <b>Ph</b>
42. *	22e "CANAL ZONE" double sl sp UL, sl toning, TG HR F-VF cent.	Sc. \$ 275 <b>Ph</b>
43. * Pr	22var "ANA" for "CANAL", R stp in pair, VF OG HR	Sc. \$ 70
44. * B4	25 B imprint blk of 4 perfs close @ R o/w F-VF TG	Sc. \$ 110
45. *	26 VF cent, TG H	Sc. \$ 20
46 * B4	27 UL cnr margin blk w/ part inscription TG VF	Sc. \$ 55+
47 */**B10	27 T blk of 10 w/ guidelines & inscription F-VF+ NH (2 w/ dist.gum). a showpiece	Sc. \$ 134+ <b>Ph</b>
48. ** B4	27var "C_A" spaced LR stp in blk of 4, couple sp, F+-VF NH	Est. \$ 50+
49. *	29 F+ OG HM	Sc. \$ 37.50
50. *	29 VF sl. TG HM	Sc. \$ 37.50
51. * B4	30 VF sl dist OG/TG	Sc. \$ 200
52. **B10	30 T blk of 10 w/ guidelines & inscription F NH	Sc. \$ 455+ <b>Ph</b>
53. * 4B4	27-30 compl. set in blks of 4, #27 o'prt shifted down, F-VF sl. TG LH, nice set	Sc. \$ 535 <b>Ph</b>
54. ** B4	31var (CZSG 31.B.4e) B margin blk w/ guideline, UL stp 10.75 mm spacing, F-VF	Sc. \$ 18+
55. ** B4	32 T blk of 4 w/ part inscription VF NH	Sc. \$ 20+
56. *	33a "CANAL ZONE" double L margin sgl, F sl. dist OG (app NH)	Sc. \$ 375 <b>Ph</b>
57. o	39var (CZSG 39.Bvar) w/ work-up R of "L"(looks like apostrophe) F	Est. \$ 10
58. * B4	39var (39.Bvar) TL part inscr. blk of 4, LL stp (pos 11) brk "O"app "ZCNE" F TG	Sc. \$ 40+
59. *	39d "CANAL ZONE" reading down VF sl.dist OG	Sc. \$ 200 <b>Ph</b>
60. *	39e Inverted Center R margin sgl, faint H crs, F-VF TG	Sc. \$ 650 <b>Ph</b>
61. *	46 (CZSG 46.B) light green scarcer 2 <sup>nd</sup> prt, APS cert. VG-F TG	Sc. \$ 250+ <b>Ph</b>
62. o	47 used VF	Sc. \$ 60
63. o	48 (CZSG 48.B) used VF app w/small sealed tr @ TR	Sc. \$ 130
64. *	48 (CZSG 48.B.1) "Z" under "C" VF app w/ small sealed tr @ L TG	Sc. \$ 450+ <b>Ph</b>
65. o	48 (CZSG 48.B.1a) "Z" beyond "C" used VF app w/ pinhole in center	Sc. \$ 130 <b>Ph</b>
66. *	51 F+-VF OG HM	Sc. \$ 35
67. **	52 VF NH	Sc. \$ 32.50+
68. o 2	52 two F-VF used sgls w/ Corozal and Pedro Miguel S-O-N cancels, F-VF	Sc. \$ 20
69. **	53 F+ NH	Sc. \$ 110
70. *	53a "CANAL ZONE" Inverted, B margin sgl F+ TG HM	Sc. \$ 150 <b>Ph</b>
71. *	53a "CANAL ZONE" Inverted F-VF TG LH	Sc. \$ 150 <b>Ph</b>
72. **	54 very slightly toned VF NH	Sc. \$ 150 <b>Ph</b>
73. *	54 F+-VF HM fresh	Sc. \$ 150 <b>Ph</b>
74. ** B4	55var (CZSG 55.1) dramatic misperf VF NH	Est. \$ 100 <b>Ph</b>
75. **	56f "ZONE" Double w/ L selvedge showing portion of "CANAL" F-VF NH	Sc. \$ 1000+ <b>Ph</b>
76. *	57 F+- VF TG wide side margins	Sc. \$ 300 <b>Ph</b>
77. *	62a "CANAL ZONE" reading down F-VF LH	Sc. \$ 60
78.** 2	62vars 2 stamps w/ type V o'prts, black (F-VF NH) & red (G-F NH) unlisted – possible essays per CZ Stamps	Est. \$ 20
79. *	66 VF HR w/ PFC	Sc. \$ 145 <b>Ph</b>
80. o	67 used VF centering, sm ink spots @ T margin	Sc. \$ 200 <b>Ph</b>
81. ** 2B4	68-69 VF NH blks of 4 #68 has dropped "O" in "ZONE" in 3 positions	Sc. \$ 80
82. * B4	71b "ZONE" inverted in blk of 4, nat SE R as always, abt F TG	Sc. \$ 350 <b>Ph</b>
83. ** B8	71b "ZONE" inverted in blk of 8, nat SE R & T, 2 sep perfs @ R ctr, F+ NH	Sc. \$ 350 <b>Ph</b>
84. *	71d "ZONE CANAL" F+ sl dist gum	Sc. \$ 500 <b>Ph</b>
85. *	71d "ZONE CANAL" nat SE B F, HM	Sc. \$ 500 <b>Ph</b>

**CANAL ZONE STUDY GROUP MAIL SALE #40**

<b>LOT No.</b>	<b>DESCRIPTION</b>	<b>VALUE</b>
86. ** BP	71e booklet pane of 6 abt F NH	Sc. \$ 80
87. ** BP	73a booklet pane of 6 abt F NH, diagonal gum bend on reverse	Sc. \$ 175
88. * BP	73a (73a.A) booklet pane of 6, 1 <sup>st</sup> prtg., pos. H guideline @ R F-VF part OG (TG)	Sc. \$ 175
89. ** BP	73a (73a.B) bklt pane of 6 + covers, 2 <sup>nd</sup> prtg. F-VF NH	Sc. \$ 175+
90. *	77 (77.1g) 9 mm spacing F-VF TG	Sc. \$ 27.50
91.(*) pr	84, 84.1 combination pair, L stp 8.7 mm spacing F-VF no gum	Sc. \$ 16+
92. *	84b "ZONE CANAL" VF sl TG	Sc. \$ 450 <b>Ph</b>
93. **	84b "ZONE CANAL" F+-VF NH	Sc. \$ 450 <b>Ph</b>
94. * BP	84d booklet pane of 6 F-VF, app NH, but sl. gum dist from interleaving	Sc. \$ 175
95. o	85var (85.2) wrong font ZONE, light cancel, couple sp L, F-VF	Sc. \$ 175 <b>Ph</b>
96. * B4	85a "ZONE ZONE" UL stp in blk of 4, F TG	Sc. \$ 550 <b>Ph</b>
97. * Str 3	86a "ZONE ZONE" middle stp in strip of 3, F-VF centering, sl dist gum HM	Sc. \$ 1000 <b>Ph</b>
98. * pr	86b "CANAL" inverted L stp in pair, nat SE @ T as always, VF VLH	Sc. \$ 950 <b>Ph</b>
99. ** pr	86var (86.5b) "ZONE" split horiz. in V pair, 2 <sup>nd</sup> prtg. LL pane nat SE L F-VF NH	Est. \$ 25
100. *	86var split o'prt, appears to read "ZONE CANAL", but trace of "ZONE" @ B, nat SE L w/ guideline, G-F TG	Est. \$ 25
101. * pr	86var (86.5a) H pair, angled o'prt, "CANAL ZONE" split vertically G-F HM	Est. \$ 25
102. * B12	87a "ZONE ZONE" in blk of 12, pn "SA" on back of error F-VF HM Rare-only 5	Cat. \$ 3000 <b>Ph</b>
103. *	89var prominent break in "AL" of "CANAL" F+ HM	Est. \$ 30
104.(*) B4	89var broken "O" in "ZONE" UR stp in blk of 4, F+ no gum	Sc. \$ 125
105. ** B4	91 VF NH block-beautiful! Cat as NH sgls	Sc. \$ 28+
106. **	91a "ZONE" only B margin sgl, G-F NH	Sc. \$ 1000 <b>Ph</b>
107. **	91c "ZONE CANAL" F-VF NH	Sc. \$ 275 <b>Ph</b>
108. *	91c "ZONE CANAL" F-VF OG HR	Sc. \$ 275 <b>Ph</b>
109. *	91var (91.4) "ZONE" split @ T, trace @ B, nat SE B F-VF HM	Est. \$ 100 <b>Ph</b>
110. ** B4	92 (92.B) 7 mm 2 <sup>nd</sup> prtg F-VF NH Cat as NH sgls	Sc. \$ 48+
111. * B15	92c "ZONE CANAL" LL stp in LL margin block of 15, Plate No 16648 @ TL, siderographer's initials @ BL, perfs close @ R & barely touch T, few sensibly reinforced perfs, mostly in margins, somewhat glazed (tropical) gum, slight overall oxidation. A Great Rarity-Only 3 known. Ex Plass & ex Drucker	Sc. \$ 4750 <b>Ph</b>
112. ** B4	93 blk of 4, F-VF NH Cat as NH sgls	Sc. \$ 36
113. o 2	93 Two previously joined sgls, V misperf w/ "CANAL" entirely in margin @ T R stp w/tr @ T, nat SE, guideline @ R. A striking freak.	Est. \$ 15 <b>Ph</b>
114. *	94 L margin sgl, F+-VF sl. trop OG	Sc. \$ 230 <b>Ph</b>
115. o	95 used VF	Sc. \$ 55
116. o	95var used wrong font CANAL, sm thin & small tr @ T, F-VF appearing	Sc. \$ 275 <b>Ph</b>
117. * B4	97 (CZSG 97.A, 97.2) blk of 4, 11mm spacing UL stamp, F OG HM	Sc. \$ 200+ <b>Ph</b>
118. ** str3	97 (CZSG 97.A) 1 <sup>st</sup> prtg. 9 mm spacing strip of 3 F NH	Sc. \$ 225 <b>Ph</b>
119. **	98 F-VF (nice centering for this difficult stamp) NH	Sc. \$ 11
120.*/**B8	101var TR margin blk of 8, UR stp "E" under "L" F-VF 6 stps NH	Sc. \$ 18.50
121. ** BP	101a booklet pane of 6 F NH	Sc. \$ 200 <b>Ph</b>
122. * BP	101a booklet pane of 6 F dist. gum on B pr	Sc. \$ 200
123. ** BKLT	106a complete unexploded booklet of 4 panes pos J guideline @ B F-VF NH	Sc. \$ 90+
124. o	111var used sgl w/ pre-printing paper fold (see p. 14 2QCZP) F+	Est. \$ 15
125. ** BP	115c F-VF NH handmade BP of 6, Economist guarantee mark on back	Sc. \$ 80
126. **	116var (CZSG 116.1) "CANAL" split VG-F NH	Est. \$ 25

**CANAL ZONE STUDY GROUP MAIL SALE #40**

LOT No.	DESCRIPTION	VALUE
127. ** BKL	117a compl. booklet of 2 panes, ea w/ plate Nos (132720,132721) F-VF NH Napp	Cat.\$ 185
128. ** 2BP	117a exploded booklet, 2 panes, covers & interleaving, 1 pos I guideline L,VF NH	Sc. \$ 40
129. ** 2BP	117b exploded handmade booklet, 2 panes & covers, VF NH	Sc. \$ 320
130. ** 2B4	118vars 2 blocks of 4, 1 w/ strong offset of o'prt on back; 1 w/ brk "Z" & missing serif on B, VF NH	Est. \$ 20
131. ** 16	120-135 F-VF NH complete set	Sc. \$ 162.75
132. *	128var (CZSG 128.1) dot between "1"s VF LH	Est. \$ 15
133. **16B4	120-135 complete set in blocks of 4, F-VF NH	Sc. \$ 651 <b>Ph</b>

**AIR MAIL STAMPS**

134. *	C2 F-VF HM	Sc. \$ 60
135. ** B4	C2 F+-VF NH nice looking	Cat. as 4 NH sgls Sc. \$ 440+ <b>Ph</b>
136. * 2	C5a,C5 dropped "2" F-VF OG HM, includes C5 VG-F for comparison	Sc. \$ 85
137. *	C5a dropped "2" F-VF OG LH	Sc. \$ 85
138. ** pr	C5a,C5 dropped "2" and regular in H pair F-VF NH	Sc. \$ 92.50
139. o	C5a used dropped "2" G-F	Sc. \$ 60
140. o B4	C5a,C5 dropped "2", regular, 2 examples ea. Small reinf @ T F-VF	Sc. \$ 122.50 <b>Ph</b>
141. ** 6	C15-C20 complete set F-VF NH	Sc. \$ 162.75
142. ** pr	C25a H pair imperforate vertically, cent to B, as typical, guideline @T, F-VF NH	Sc. \$ 1250 <b>Ph</b>

**POSTAGE DUES**

143. o 2B4	J1 (CZSG J1.1,J1.2) blocks, latter with 3mm H spacing, reinf perfs @ T, VG-F	Sc. \$ 150 <b>Ph</b>
144. o B4	J17 used block of 4, F-VF S.O.N. Balboa Heights 9/11/25	Sc. \$ 47.50
145.(*) pr	J17b,J17 "POSTAG" L stp in rejoined pair, nat SE B, F-VF NG	Sc. \$ 805 <b>Ph</b>
146. **7B4	J25-J29 complete set, including wet & dry prtgs. In blocks F-VF NH	Sc. \$ 29.60

**PLATE NUMBER BLOCKS AND SINGLES**

147. * B6	72 L plate block of 6, #16863, brk "L" in TR stp, VG-F+ OG LH	Sc. \$ 37.50
148. * 10	8 diff plate # singles & 2 plate # pairs on U.S. o'prt issues (72,73,74,85,86,88,89,96,103,118) gen. F-VF, but 88 perf sep, 89 NG, 118 st	Est. \$ 20
149. *	75 R plate # sgl #15511 F-VF OG VLH	Sc. \$ 40+
150. * B6	79 R plate block of 6, #14428 F OG LH	Sc. \$ 425 <b>Ph</b>
151. ** B6	86 B plate block of 6, #16391 F+-VF NH	Sc. \$ 165 <b>Ph</b>
152. ** B4	88 R margin block of 4 w/ plate #15350 F-VF NH	Cat. as 4 NH sgls Sc. \$ 136 <b>Ph</b>
153. ** B4	89 T margin block of 4 w/ plate #15796 F-VF NH	Cat. as 4 NH sgls Sc. \$ 170 <b>Ph</b>
154. * B4	90 (90.A 1 <sup>st</sup> prtg) B margin block of 4 w/ plate #14913 F OG HM (2 NH)	Sc. \$ 39
155. ** B4	90 (90.B 2 <sup>nd</sup> prtg) L margin block of 4 w/ plate #17432 F-VF NH	Cat as 4 NH sgls Sc. \$ 48
156. ** B4	90 (90.B 2 <sup>nd</sup> prtg) T margin block of 4 w/ plate #17431 VF NH	Cat as 4 NH sgls Sc. \$ 48
157. ** B4	90 (90.C 3 <sup>rd</sup> prtg) B margin block of 4 w/ plate #18928 VF NH	Cat as 4 NH sgls Sc. \$ 48
158. * B6	91 B plate block of 6, #18023 F-VF VLH	Sc. \$ 190 <b>Ph</b>
159. * B6	92 (92.A 1 <sup>st</sup> prtg) L plate block of 6, #16646 F-VF TG	Sc. \$ 175 <b>Ph</b>
160. * B6	93 L plate block of 6, #14439 F-VF, minor perf seps TG	Sc. \$ 250 <b>Ph</b>
161. ** B6	96 L plate block of 6, #18583 VF NH	Sc. \$ 67.50+
162. ** B6	96 BL margin block of 6 w/ plate #18577 & siderographer's initials F-VF NH	Sc. \$ 40.50
163. */**4	4 plate # sgls: 97.A(F,HM),97.B(F,NH),98(FVF,HR),99(G-F,NH)	Sc. \$ 155
164. ** B4	101 (101.A 1 <sup>st</sup> prtg) LR plate block of 4, #18809 F-VF NH	Sc. \$ 17.50+
165. * B4	101 (101.B 2 <sup>nd</sup> prtg) LL plate block of 4, #18985 F-VF dist OG	Sc. \$ 17.50

**CANAL ZONE STUDY GROUP MAIL SALE #40**

LOT No.	DESCRIPTION	VALUE
166. * B4	101 (101.B 2 <sup>nd</sup> prtg) plate block of 4, #18986 F-VF dist OG	Sc. \$ 17.50
167. * 2B4	102 2 blocks: 102.A LR plate block of 4, #18803 single gum breaker, VG-F NH; 102.B block of 4 two gum breakers, F-VF OG HM	Sc. \$ 111
168.** B4	116 LL plate block of 4, #20549 F NH	Sc. \$ 60
169.**	C2 T plate # sgl #115181 F-VF NH	Sc. \$ 110+Ph
170.*/**Str3	C5a,C5 dropped "2" on middle stamp above pl #115186 F LH, others NH	Sc. \$ 94
171.*/o 13	C7//C14 eleven mint & 2 used plate # sgls: C7*,C8*,C9*(x3),C10*(x3),C12* C14*(x2); C11 & C12 used, gen. F-VF	Est. \$ 20
172 * B6	C12 B plate block of 6, #146729 F-VF HR on 1 stp	Sc. \$ 60
173.** B6	C14 B plate block of 6, #123579 VG-F NH, nat gum bends as typical	Sc. \$ 90
174.** B6	C15 T plate block of 6, #141201 VF NH	Sc. \$ 45
175.* B6	C17 B plate block of 6, #140994 F-VF OG, sl. gum dist on L 2 stps, nat gum skips	Sc. \$ 57.50
176.** B6	C25 L plate block of 6, #162161 VF NH	Sc. \$ 90
177.** 3B4	3 pl blocks of 4: C28(LR#166838),C29(LR#166840),C31(UR#166842) F-VFNH	Sc. \$ 103.50Ph
178.** 6B4	C36-C41 complete set abt VF-VF NH nicely centered	Sc. \$ 70.50
179 o	J1 used B plate single #5510 & star F lt. cancel	Est. \$ 25
180. * B6	J17 L plate block of 6, #15510 G-F TG	Sc. \$ 500 Ph
181. o 3B6	J21,J23,J24 used L or R side plate blocks of 6, all #118116, abt VF cent, toned	Est. \$ 180

**PSN PERFIN STAMPS & COVERS**

Note: The key to PSN and perf P orientation numbers is found on the CZSG website (Perfin Census)

182. o 3	105(orientation 1), 108(orientation 6), 117(orientation 5) F+	Est. \$ 75 Ph
183. o	115(orientation 1) F	Est. \$ 50 Ph
184. o	116(orientation 1) F	Est. \$ 75 Ph
185. o	141(orientation 1) 1pp o/w F-VF	Est. \$ 15 Ph
186. o C	C9 (orientation 5) <u>on cover</u> from Royal Norwegian Consulate to Norwegian Shipping & Trade Mission, NYC. Cristobal 7/14/45 F-VF Rare	Est. \$ 500 Ph

**OFFICIAL PERF P STAMPS & COVERS**

187. o	38 (38.3c 9mm sp) Perf P orientation 8, used abt VF	Est. \$ 15
188. o	40 Perf P orientstion 5 used F-VF	Est. \$ 15
189. *	40 (40.1b) Perf P orientation 6 F-VF TG HR	Est. \$ 15
190. o	54 Perf P orientation 1 "P"s split used F-VF	Est. \$ 25
191. o	55 Perf P orientation 4 used F-VF	Est. \$ 20
192. o	56 Perf P orientation 1 used F	Est. \$ 15
193. o	62 Perf P orientation 1 used F-VF	Est. \$ 20
194. o	62 Perf P orientation 8, portions of 2 "P"s on stamp used F-VF	Est. \$ 20
195.*/**4	71(HM),73(NH),74(HR),75(TG) Perf Ps, all orientation 1 F-VF	Est. \$ 50 Ph
196. o C	86 Perf P orientation 1 <u>on O.B.cover</u> to England F-VF Rare	Est. \$ 500 Ph
197. o pr	104 H pair Perf P orientation 4, R stp couple sp & st LR o/w F-VF used	Est. \$ 15
198. o	107 Perf P orientation 5, sl toning @ T, used F-VF	Est. \$ 10
199. o LC	C10 pair nat SE R Perf P orientation 8 on U.S. District Court legal cover to Washington, DC, Cristobal 9/1/38 VF	Est. \$ 200 Ph
200. o	C14 Perf P w/portion of 2 <sup>nd</sup> P orientation 8, nat SE R used VF	Est. \$ 25+
201. o	C17 Perf P orientation 6 used F+	Est. \$ 25
202. o	C19 Perf P orientation 6 w/portion of 2 <sup>nd</sup> P, F	Est. \$ 25

**CANAL ZONE STUDY GROUP MAIL SALE #40**

LOT No.	DESCRIPTION	VALUE
<b>AIR MAIL OFFICIALS</b>		
203. ** 8	CO1-CO7,CO14 complete set VF NH	Sc. \$ 107
204. o 7	CO1-CO7 (CO7 is O/N variety) CTO LH F-VF	Sc. \$ 31.50+
205. o 2	CO1(VF),CO2(F) <u>postally used</u> , scarcer than CTO	Est. \$ 15
206. o 10	CO1(SE),CO2(x2,1sp),CO3(x3),CO5,CO6(2x,SE),CO7, <u>all postally used</u> , F-VF	Sc. \$ 40.25+
207. o 4	CO3(postally used),CO4(x2),CO5(postally used), <u>all O/N varieties</u> , F-VF	Est. \$ 30
208. o	CO9 CTO NH F	Sc. \$ 275 <b>Ph</b>
209. o	CO10 CTO HM F	Sc. \$ 175 <b>Ph</b>
210. o	CO10 <u>postally used</u> F	Sc. \$ 175+ <b>Ph</b>
211. *	CO11 F LH scarce unused	Sc. \$ 1250 <b>Ph</b>
212. o	CO11 <u>postally used</u> F	Sc. \$ 65+ <b>Ph</b>
<b>OFFICIALS</b>		
213. o 5	O1,O2,O4,O6,O9 F-VF <u>postally used</u> , scarcer than CTO	Est. \$ 25
214. o	O3var O/N variety CTO NH VF	Sc. \$ 25+
215. o B4	O6 var CTO G-F blk of 4, UL stp shows "C" of "OFFICIAL" as "O"	Est. \$ 20
216. o	O9var (O9.1) "A" under "L" pos 32 on some panes, CTO VF	Est. \$ 15
<b>PROOFS/ESSAYS/SPECIMENS</b>		
217. BP	Plate Proof on card – frame only for Panama #197b booklet pane used to produce CZ #38b,52b, &55e, V crs through R 3 frames, o/w VF	Est. \$ 75 <b>Ph</b>
218. BP	Plate Proof on card – vignette only for Panama # 198a booklet pane used to produce CZ # 39c,53c,&56g, H crs just above middle 2 vignettes, o/w VF	Est. \$ 75 <b>Ph</b>
219. 2BP	Plate Proofs on card – vignette & green frame only for Panama # 198a booklet pane used to produce CZ #39c,53c,&56g H crs thru each, o/w VF	Est. \$ 125 <b>Ph</b>
220. 2	Proofs on card of vignettes of CZ #58,59 F-VF	Est. \$ 50 <b>Ph</b>
221. BP	Plate Proof on card of Panama # 221 booklet pane used to produce CZ #60b, H crs o/w VF	Est. \$ 75 <b>Ph</b>
222. BP	Plate Proof (Trial Color in green) on card of Panama #222 booklet pane used to produce CZ #61f, V crs through 3 stamps, o/w VF	Est. \$ 75 <b>Ph</b>
223. pr	Precancel Proof – Type III replacement plate, V pair on white paper VF	Est. \$ 25
224. pr	Precancel Proof – Type III 2 <sup>nd</sup> replace't plate, H pair w/R selvedge, buff paper VFEst. \$ 30	Est. \$ 30
225. pr	Precancel Proof – Type III 2 <sup>nd</sup> replacement plate, H pair on buff paper, VF	Est. \$ 25
226. **	38.SC Specimen – 13.8 mm red SPECIMEN F-VF NH	Est. \$ 15
227. **	38.SD Specimen – 14.0 mm red SPECIMEN VF NH	Est. \$ 15
228. **	39.SA Specimen – 20.0 mm blue SPECIMEN F NH	Est. \$ 15
229. **	39.SE Specimen – 13.8 mm blue SPECIMEN abt VF NH	Est. \$ 15
230. **	49.S Specimen, LL corner margin single F-VF NH	Est. \$ 20
231. **	54.S Specimen, F-VF NH	Est. \$ 25
232. **	60.S Specimen, F-VF NH	Est. \$ 15
<b>PRECANCELLED STAMPS</b>		
233. o	91 Ty I vert reading up F-VF	Est. \$ 20
234. o 3	91 Ty I vert reading up, 93(x2) Ty I vert reading up, down G-F	Est. \$ 20
235. o 2	91 Ty I vert reading up, 93 Ty I horiz, few sp, just F	Est. \$ 15
236. o	93 Ty I vert reading down, F-VF	Est. \$ 20
237. o	93 Ty I vert reading down w/ SRC Mar 39 reading up, VG	Est. \$ 20

**CANAL ZONE STUDY GROUP MAIL SALE #40**

LOT No.	DESCRIPTION	VALUE
238. o 5	93 Ty I 5 diff. reading up, down, horiz, inverted, double, generally F-VF	Est. \$ 50 <b>Ph</b>
239. o B4	93 Ty I horiz. block of 4, unusual for this, F+	Est. \$ 30
240. o 5	105,106,108,111,112 Ty I generally F-VF	Est. \$ 15
241. o 6	105,106,108,11,112,114 Ty I generally F-VF	Est. \$ 20
242. o 2B4	108,109 Ty I SRC I Jul 38 blocks of 4 F-VF	Est. \$ 25
243. o 2B4	111,112 Ty I in blocks of 4, F-VF	Est. \$ 15
244. o 7	91,93,116,118(x2),119(x2) U.S o'prt types, G-F	Est. \$ 100 <b>Ph</b>
245. o 2B4	118 blocks of 4, Ty I F-VF NG, Ty IIIa F-VF NH	Est. \$ 20
246. o 3	119 Ty I(VG-F),Ty I w/SRC Sep 48(G, H crs),Ty IIIa(V crs, F-VF)	Est. \$ 15
247. o	120 Ty I <u>inverted</u> F	Est. \$ 25
248. o 6	120(wrkl),123(st),125(th),127(F),131(F),133(F), Ty I, scarce group	Est. \$ 25
249. o 2	122,123 Ty I SRC I(Feb 48 & Nov 47), F-VF, VG-F	Est. \$ 50 <b>Ph</b>
250. o	131 Ty I <u>double overprint</u> st. o/w F-VF	Est. \$ 25 <b>Ph</b>
251. o 8	120,121,123,125,127,129,133,135 Ty II F to F-VF	Est. \$ 45
252. o 4	123,125,127,129 Ty II F-VF to VF	Est. \$ 20
253. o	124 Ty II w/ SRC Ty I Jan 49 F-VF scarce	Est. \$ 50 <b>Ph</b>
254. o	124 Ty II w/ SRC Ty I May 48 F-VF scarce	Est. \$ 50 <b>Ph</b>
255. o	126 Ty II w/ SRC Ty I Jul 48 abt VF rare	Est. \$ 75 <b>Ph</b>
256. o	126 Ty II w/ SRC Ty I Jul 48 abt VF rare	Est. \$ 75 <b>Ph</b>
257. o 4	125,129,133,135 Ty II all missing portions of or weakly printed o'prts, F-VF	Est. \$ 25
258. o 9	120,121,123,125,127,129,131,133,135 Ty II mostly F-VF exc 120,133 (F)	Est. \$ 50
259. o pr	135 Ty II H pair F-VF unusual	Est. \$ 20
260. o 6	105,108,111,113,138,139 Ty III F-VF	Est. \$ 10
261. o 9	105,108,111,112,113,114,117,138,139 Ty III F-VF	Est. \$ 15
262. o 2B4	113,139 Ty III blocks of 4, latter w/R selvedge showing extent of PC, F-VF	Est. \$ 10
263. o 11	105,106(Pl#),108,110,112,113,117,118,119,137,138 Ty IIIa F-VF to VF some NHEst.	\$ 20
264. o 4B4	106,118,119,137 TY IIIa blocks of 4, F-VF	Est. \$ 20
265. o	111 Ty IIIa w/ SRC III Aug 54, wrkl, F	Est. \$ 15
266. o	112 Ty IIIa w/ SRC I Sep 47, VG-F scarce	Est. \$ 20
267. o	114 TY IIIa w/ SRC III Aug ?, VG-F	Est. \$ 10
268. o	139 Ty IIIa w/ SRC I Nov 50 F+	Est. \$ 10
269. o	140 Ty IIIa w/ SRC III Mar 50 F rare	Est. \$ 50 <b>Ph</b>
270. o	141 Ty IVa w/ SRC I Aug 51 F-VF	Est. \$ 10
271. o 8	105,108,11,112,113,117,138,139 Ty IIIb complete set F-VF	Est. \$ 10
272. o 8	Similar lot F-VF	Est. \$ 10
273. o 3B6	108a,138,139 Plate blocks of 6, Ty IIIb VF	Est. \$ 20
274. o 8B4	105,108,11,112,113,117,138,139 Ty IIIb blocks of 4 F-VF NH	Est. \$ 20
275. o 8	105,108(2),111,112,113,138,139 Ty IIIc (#138 W/shiny & dull gum) F-VF	Est. \$ 10+
276. o	106a Ty III w/ I/N variety sm flts rare (see note in CZSG HB 6 after Ty III)	Est. \$ 60 <b>Ph</b>
277. o	Mailing Tag bearing 111(x2),112(nat SE),138(x2) Ty IIIa, all w/ SRC III Sep 55 Cristobal 9/28/55 dbl circle struck on tag	Est. \$ 50 <b>Ph</b>
278. o 16	Balance of precancels:Ty I-105,131,132(x2),133; Ty III-108,113(sgl&blk),138; Ty IIIa-113(x2,1 w/brk 'O'in ZONE,117,138,139; Ty IIIb-112, couple flts, mostly F or better	Est. \$ 25

**REVENUES:** *Listings are based on Entwistle's 1986 pamphlet. Panama liquor revenues prepared for use in the Zone were removed from bottles, and typically show wrinkling.*

**CANAL ZONE STUDY GROUP MAIL SALE #40**

LOT No.	DESCRIPTION	VALUE
<b>REVENUES (see note previous page)</b>		
279. o	R7 VF smooth & crisp	Est. \$ 20 <b>Ph</b>
280. o	R9 F usual defects, incl. th, crs, st	Est. \$ 10
281. o	R10 F usual defects, incl. crs, st	Est. \$ 15
282. o	R12 VF smooth & crisp	Est. \$ 20 <b>Ph</b>
283. o	R13 F usual defects, incl. sm tr, crs	Est. \$ 10
284. o	R18 F-VF usual defects, incl. th & sm nibble out of T edge	Est. \$ 15
285. o	R22 VF couple nibbed perms o/w smooth & crisp	Est. \$ 20 <b>Ph</b>
286. o 3	LM7-LM9 liquor revenue meters, normal minor defects	Est. \$ 15
<b>OFFICIAL SEALS &amp; CHRISTMAS SEALS</b>		
287. *	OX1 NGAI VF+	Sc. \$ 35
288. *	OX2 NGAI abt VF	Sc. \$ 50
288A.o 3	OX3(VF), OX6a V pr on piece tied by dbl circle Balboa 10/23/?, few wrkl o/w VF	Sc. \$ 19+
289. C	OX6* on back of UC14a, pmk'd Rainbow City 5/14/73	Est. \$ 25
290. ** 12	.CS1-.CS12 complete set of Christmas/TB Seals (pg. 303 of CZ Stamps) VF	Est. \$ 10
291. **Sh50	.CS12 sheet of 50 1971 TB Seals, VF NH few minor roulette seps in selvedge	Est. \$ 10
<b>POSTAL STATIONERY ENVELOPES</b>		
292. o	U1 used for drop letter rate, Balboa Heights 1/6/23 sl. toning o/w VF	UPSS&Sc. \$ 35
293. o	U1 used after abrogation of Taft Agreement (preprinted stationery valid) Balboa Heights 9/22/24 overall toning, few minor bends o/w VF	UPSS&Sc. \$ 35
294. *	U2 VF	Sc.60,UPSS \$ 80
295. o	U2 used Ft. Grant 9/7/16 sl. toning F-VF, scarce town	Sc.25,UPSS \$ 30+
296. o	U2 used Gatun 4/10/? overall toning o/w VF	Sc.25,UPSS \$ 30
297. *	U2a red & black lt. toning VF	Sc.80,UPSS \$ 100
298. o	U2a red & black used Ancon 4/18/18 sl cnr wrkl o/w VF	UPSS 35,Sc.\$ 45
299. *	U2b (UPSS 2c) <u>Head &amp; Overprint only</u> overall toning w/ couple trivial toned spots VF scarce. 14 known per UPSS	UPSS750,Sc.\$ 1500 <b>Ph</b>
300. *	U2c (UPSS 2d) <u>Frame only</u> sl overall toning, few wrkls, o/w VF 16 known	UPSS750Sc\$ 1000 <b>Ph</b>
301. o	U3 w/#68, sl overall toning & sl (2 mm) reduction @ L from opening, o/w VF, unusual Esperanto seal on back, Balboa Heights 5/22/24	Sc.375,UPSS \$ 500 <b>Ph</b>
302. o	U4 used VF Balboa 12/31/22 (CZ omitted or v. light)	Sc.125,UPSS \$ 150 <b>Ph</b>
303. *	U5 v. slight toning VF	Sc.200,UPSS \$ 450 <b>Ph</b>
304. *	U9 (UPSS 10c) General Request CC, typical overall toning, VF	Sc.27.50+,UPSS \$ 50
305. o	U9 (UPSS 10c) Cristobal CC, typical overall toning, VF	Sc.15+,UPSS \$ 50
306. *	U9 (UPSS 10c) Balboa Heights CC, typical light toning, VF	Sc.30+,UPSS \$ 50
307. *	U9 (UPSS 12) VF	Sc.27.50,UPSS \$ 45
307A.o	U9 (UPSS 12d) Bal.Hgts.CC, paper clip mark @T o/w VF	Sc.15+,UPSS \$ 75
308. *	U9 (UPSS 13) pn on reverse, VF	Sc.27.50,UPSS \$ 35
309. o	U9var (UPSS 12 var) commas for periods in indicia, typ. overall toning, sm spots BL, RPO cancel, TR 3 4/15/25 F-VF	Sc.15+,UPSS \$ 35+
310. o	U13 (UPSS 35) used <u>to Samoa</u> , Cristobal 11/19/32 + Pago Pago, Samoa 12/25/32 receiver on front, sl wrkl across T o/w VF. Unusual destination	Sc.15+,UPSS \$ 25++
311. o	U13 (UPSS 35) used to Peru, example of PUAS rate, Cristobal 1/3/34, b/s Lima 1/13/34 "12" in circle on F, sl. overall toning, back flap damaged, VF app	Sc.15+, UPSS \$ 25+
312. *	U15 (UPSS 37) VF	Sc.250, UPSS \$ 300 <b>Ph</b>
313. *	U17 (UPSS 60) VF	UPSS \$ 50

**CANAL ZONE STUDY GROUP MAIL SALE #40**

<b>LOT No.</b>	<b>DESCRIPTION</b>	<b>VALUE</b>
314. *	U19 (UPSS 73) VF	UPSS \$ 75
315. *	UC1 (UPSS A1) VF	UPSS100,Sc. \$ 135
316. *	UC2 (UPSS A5) VF	Sc.65, UPSS \$ 100
317. *	UF1a (UPSS RE 4) couple natural paper wrkls on back, VF scarce	Sc.1300,UPSS \$ 1750 <b>Ph</b>

**POSTAL STATIONERY CARDS**

318. o	UX2 (UPSS S3) used Ancon 5/19/08 b/s Tabernilla 5/19/08, sl toned strp R o/w F Sc.	\$ 80
319. *	UX2 (UPSS S7) HMs on back show thru o/w VF scarce unused card	UPSS \$ 300 <b>Ph</b>
320. o	UX4 (UPSS S11) used VF interesting message from Coveleski on back	Sc.60, UPSS \$ 65
321. *	UX4 (UPSS S11) VF	UPSS 150,Sc. \$ 160
322. o	UX4 (UPSS S11) used, sl toning F-VF Cristobal M-1 10/28/16	Sc.60, UPSS \$ 65
323. *	UX4 (UPSS S11-CS14) unused 1923 Xmas Card VF	UPSS \$ 500 <b>Ph</b>
324. * 2	UX4 two unused Xmas Cards UPSS CS11 & CS14, sm flts, including trs, st, toning. Decent appearing, affordable examples	UPSS cat \$ 1100 Est. \$ 150 <b>Ph</b>
325. *	UX5 (UPSS S12-CS12) unused 1922 Xmas Card sl toning VF	UPSS \$ 1500 <b>Ph</b>
326. (*)	UX5 (UPSS S12) unused w/preprinted address (Sojourner's Lodge) bumped cnrs F Sc.	\$ 1250 <b>Ph</b>
327. *	UX6 (UPSS S13) VF+	Sc. \$ 1050 <b>Ph</b>

**FIRST DAY COVERS**

327A.PPC	42 on view side of realphoto tied by partial Balboa 3/1,b/s Balboa Rec'd 3/1/15 FD Sc.	\$ 200 <b>Ph</b>
327B.PPC	43 on view side of realphoto tied by partial Balboa 3/1,b/s Balboa Rec'd 3/1/15 FD Sc.	\$ 160 <b>Ph</b>
328. C	71 FDC Gatun 7/1/24 local use on brown OB envelope VF	Sc. \$ 75
329. C	73 FDC Gatun 7/1/24 local use on brown OB envelope VF	Sc. \$ 80
330. C	72 pre-FD Cristobal 4/13/25 (official FD was 4/15), overall toning o/w VF	Est. \$ 80+ <b>Ph</b>
330A. C	70,72 pre-FD Cristobal 4/2/25 M-2 (official FD 4/15), overall toning,cnr bends F	Est. \$ 100 <b>Ph</b>
331. C	96 unauth FD Balboa 7/4/26 (see note in Sc), "Harris" cachet, sm crs UL sl toning	Sc. \$ 60+
332. C 2	96 pre-FD Cristobal 7/4/26 & Balboa Hgts.7/6/26 (sm wrkl T) on brown env. VF	Sc. \$ 120+
333. C	96 FDC Ancon 7/6/26 stamp overlaps R edge of lt. brown env. F-VF	Sc. \$ 60
334. C	96 FDC Pedro Miguel 7/6/26 stamp overlaps R edge of lt. brown env F	Sc. \$ 60
335. C 3	105(Bal.Hgts.10/3/28),106(Balboa10/1/28),107(Bal.Hgts.6/25/29) couple wrkls,F-VF Sc.	\$ 40
336. C	114.Ba 50c rose lilac EKU (FD reportedly by Tatelman), Bal.Hgts. 6/10/55, Reg. VF	Est.\$ 50
337. C 12	117 FDC:12 diff towns, some scarce(missing Coco Solo) 8/15/34, cachet F-VF	Est. \$ 75
338. C 6	120//131 FDC: 6 diff. w/various combos of 25 <sup>th</sup> Anniv set, most w/ Crosby photo cachets, some toning, couple minor trs., Bal. Hgts. & Cristobal 8/15/39	Est. \$ 15
339. C 16	120-135 FDC compl. set on 16 cvrs Balboa Hgts. 8/15/39, top 4 are Reg, NC	Sc. \$132.50
340. C 18	139 Stevens FDC 4/25/46, 16 diff towns + 2 extras, F-VF. hard to assemble	Est. \$ 50+
341. LC	U12 (UPSS 31) EKU Balboa Hgts. 5/2/33 w/ #106 to Germany V crs & sm edge tr	UPSS \$ 200+ <b>Ph</b>
342. C	UC1 (UPSS A1) FDC Balboa 5/21/28 w/ # 98 & 103 (10c rate to U.S.)	Sc. \$ 175 <b>Ph</b>
343. C 32	156 Girl Scout cover coll. 22 FDC, mostly diff cachets + 10 commercial cvrs, range of rates, cancels. Gen. F-VF Interesting	Sc. \$ 57+
344. C 40	U.S. #856 Canal Anniv. Collection of 33 mostly different cacheted FDC + 7 other souvenir cvrs + mint block & 3 pl # sgls. Good basis for an exhibit. F-VF	Est. \$ 75

**FIRST FLIGHT COVERS**

345. C	AAMS CZ #24 FAM 5 CZ-US, colorful franking incl #70,100-106 on UC2a	Est. \$ 50
346. C	AAMS CZ #24 FAM 5 CZ-US, attractive franking, incl CZ o'prts on 1c,1 1/2c,2c,3c,5c, 10c US 4 <sup>th</sup> bureaus+ CZ #105-106 + Panama # 256-7 (Lindbergh), Bal. Hgts. 2/9/29	Est. \$ 20+
347. C	AAMS CZ #24 FAM 5 CZ-US, CZ #C3, 96 + 16b block of 4 (not valid for postage), Bal. Hgts. 2/9/29	Est. \$ 15

**CANAL ZONE STUDY GROUP MAIL SALE #40**

LOT No.	DESCRIPTION	VALUE
348. C	AAMS CZ #24 FAM 5 CZ-US w/ CZ#70(pr),84,105(pl #),106 + Panama #256-7 <u>underpaid</u> by 21c, Bal. Hgts. 2/9/29, overall toning, LR cnr bend	Est. \$ 10
349. C 17	FFCs – Group of 17: AAMS CZ-24(x2),31f,37a,122(3 diff),128(x3),128c(x2), 131,130b,132a,134a(x2) AAMS \$61.50	Est. \$ 20
350. C	AAMS CZ #55d FAM 5 CZ-US 33 hr Reg cvr w/CZ #90,C4 Bal.Hgts.4/29/30 sl. overall toning, HM on back o/w VF	Est. \$ 15
351. C	AAMS CZ #55d FAM 5 CZ-US 33 hr w/CZ#C3 F+, Cristobal 5/1,signed by Bliss	Est. \$ 15
352. C	AAMS CZ #56 FAM 5 CZ-Venezuela w/CZ #102,106,109,C1 Reg Bal.Hgts.5/1/30 mildly toned o/w VF	Est. \$ 15
353. C	AAMS CZ #88 RT Coco Solo-Galapagos w/CZ#C7pr Cristobal 2/6/36, toned VFAAMS	\$ 25
354. C	AAMS CZ #88 RT Coco Solo-Galapagos W/CZ#C9 Cristobal 2/6/36, toned VF AAMS	\$ 25

**COVERS BY SCOTT #**

355. C	#1 (F) both PANAMAs up, single on neat small cover to Perry, tied by 7 bars, La Boca 6/29/04 + Cristobal 6/30/04, presumably short paid, only 4 examples recorded in Salz Census, 1989 PFC states “small surface scrape bottom right” (hard to see), JCPerry guarantee on back. HRs on back.VF. Cat as single on card Sc.	\$ 1650+Ph
356. C	#2 (F) on neat small cover, tied by 7 bars & Cristobal 7/1/04 + Ancon 6/29/04 @ R Cristobal 7/1/04 on back. 1989 APS cert, JCPerry guarantee on back	Sc. \$ 225 Ph
357. C	#2 nat SE B, VG-F tied by 7 bars & Cristobal 6/28/04 + Ancon 6/27/04 @ R. to Perry. Included in Salz Census as genuine. VF	Sc. \$ 225 Ph
358. C	#3 (VF) tied by 7 bars w/ La Boca 7/11/04 & Cristobal 7/12/04, APN Colon 7/13/04 on rev. Neat small cover. Perry to Hyatt. Included in Salz Census as genuine. VF	Sc. \$ 325 Ph
359. C	#3 (VF) on neat small cover, tied by 7 bars w/ La Boca 7/9/04 & Cristobal 7/10/04 1973 APS cert. JWBartells guarantee on back. Sl. soiling at edges o/w VF	Sc. \$ 325 Ph
360. PPC	#4 (F) on early Preciado color PPC (Park near Cathedral, Panama), tied by New York MC 11/11/04 w/ magenta Ancon 10/31/04 HS-1 @ L VF	Sc. \$ 75 Ph
361. PPC	#4 (F) on Maduro dual view PPC, tied by 7 bar cancel, Bohio & Gorgona 12/8/04 Hs-1 cancels VF	Sc. \$ 75 Ph
362. PPC	#5 (VF) w/ brk “C”in “CANAL” on Maduro dual view PPC, tied by 7 bar cancel, Empire & Gorgona 12/9/04 Hs-1 cancels, card F, but some surface scrapes LL	Sc. \$ 75 Ph
363. PPC	#5 (F) on Maduro PPC, tied by 7 bar cancel and Empire 12/7/04 Hs-1, plus Gorgona 12/8/04 HS-1, card crisp w/sl. bumped cnrs, moderate toning o/w VF	Sc. \$ 75 Ph
364. C	#5 (VG-F B margin sgl) tied by magenta 7 bar cancel, lt. Ancon 8/31/04, back flap tr o/w F-VF. Commercial usage	Sc. \$ 75 Ph
365. C	#6 (VF) tied by 7 bar cancel on neat small cvr, w/ Gorgona 12/7/04 & Empire 12/8/04 Hs-1. APS cert. Ex Gibbs VF	Sc. \$ 275 Ph
366. C	#8 (F) tied by 7 bar cancel w/ Empire 12/7/04 & Gorgona 12/8/04 Hs-1, APS cert T edge flaw away from everything o/w VF Ex Gibbs	Sc. \$ 500 Ph
367. C	#4-8 complete set tied by 7 bar cancel, w/ lt. Ancon DIC 10 1904, to/from Bienkowski w/ his ornate cc @ L, #5,6,8 w/ nat SE @ T, V file fold & sm closed tr @ B	Sc. \$ 500+Ph
368. C	#4-8 complete set tied by 7 bar cancel, w/ lt. Ancon DIC 8 1904, stamps F-VF (no SE), cover has trop st. & toning	Sc. \$ 500+Ph
369. C	#9 pr (VF) tied by Ancon Sta A 4/25/06, b/s Cristobal Rec’d 4/25/06, some overall toning, closed tr on back flap, 2 folds, 1 affecting R stp. F-VF appearing	Sc. \$ 12.50+
370. PPC	#9 (VF) tied by Ancon 11/13/05 Hs-2 VF	Sc. \$ 12.50
371. PPC	#9 (F-VF)w/ brk N1,A,L,O, tied by Cristobal Hs-2a (dial only) 11/27/05, sm tr T not affecting stamps or cancel, st LL cnr	Sc. \$ 12.50

**CANAL ZONE STUDY GROUP MAIL SALE #40**

<b>LOT No.</b>	<b>DESCRIPTION</b>	<b>VALUE</b>
372. PPC	#9 (F-VF) tied by diagonal 7 bar cancel, magenta Rc-1 Ancon SET 6 1905, st ow VFSc.	\$12.50
373. PPC	#9 (VF) tied by 7 bar cancel, La Boca 4/4/05 Hs-1 Maduro PPC, VF	Sc. \$ 12.50
374. C	#10 (VF) tied by 7 bar cancel on neat sm. cvr, Ancon 8/7/05 Hs-1, lt overall toning Sc.	\$ 17.50
375. C	#10 (F-VF) tied by Ancon 7/19/05 Hs-1b, b/s La Boca 7/20/05 Hs-1b, sl toning.wrkSc.	\$ 17.50
376. C	#13.C & 9 (2 pr), stps F-VF on partial Reg. cvr (L cvr reduced @ L), tied by Ancon Sta. A 4/6/06 Hs-3, b/s Cristobal Reg.Div.Rec'd 4/6/06 RgRc-1	Sc. \$ 125 <b>Ph</b>
377. PPC	#16b.1 spaced C_A, tied by Empire 11/30/06 Hs-11 on Garfield House Colon PPCVFS.	\$ 25
378. PPC	#16b (x2,1 SE) on early realphoto PPC "Culebra Hotel",Cristobal 11/12/06 to JamaicaEst.	\$ 20
379. C	#17 nat SE T, F tied by sharp <u>Matachin</u> 4/7/06 Hs-2, b/s Cristobal Rec'd 4/7/06 Rc-3, sl. soiled' HR on back o/w neat small cvr. Scarce town marking.	Est. \$ 75 <b>Ph</b>
380. C	#17 on small cvr, reduced horizontally, sharp <u>Tabernilla</u> 5/1/06 Hs-11, b/s Cristobal Rec'd 5/2/06 Rc-3	Est. \$ 15
381 LC	#20, F few sp, rnd cnr B, also #12 dk carmine w/ piece missing @ T, tied on Reg. cvr, Pedro Miguel 3/18/10 Hs-11 also Rg-1a, b/s Cristobal Rc-5, cvr overall toned & minor edge wear	Sc. \$ 225+ <b>Ph</b>
382. C	#19 (F, nat SE B) tied thru perfs by Mk-11, plus #12 (F-VF dk carmine), 16a, 17 pr both F-VF. NY paper reg label applied over latter 3, on Reg. cvr to <u>S. Rhodesia</u> , Ancon Sta A 6/25/06 Rg-4 Cristobal RgXL-3 on F, b/s Cristobal 6/26/06 RgRc-1, Several other b/s, sm closed tr BR, sm wrkls UL, opened @ B o/w F. rare destinationSc.	\$275++ <b>P</b>
383. PPC	#22 (few sp B o/w VF) tied by early <u>Station"A" Cristobal</u> Oct 18 PM Hs-4, somewhat smudgy but readable, scarce cancel, trop st on card	Est. \$ 100 <b>Ph</b>
384. C	#23 (F-VF) Gatun 10/21/07 Hs-11	Est. \$ 10
385. C	#23 scarlet (VF) on sl. toned cvr. Gorgona 3/24/08 Hs-11	Est. \$ 10
386. C	#23 (VF) tied by partial <u>Miraflores</u> Hs-12 9/13/09 on sm. cvr. Some soiling, wrkls on back flap. Scarce town.	Est. \$ 50 <b>Ph</b>
387. PPC	#23 (VF) tied by French pm "Colon a St.Nazaire 1/4/08" on Waldrop PPC "The Famous Chagres River" to Paris. VF Unusual	Est. \$ 20 <b>Ph</b>
388. C	#24 (VF) tied by Las Cascadas 4/25/08 Hs-11 to Switzerland, few wrkls o/w VF	Sc. \$ 40
389. LC	#26.A B margin imprint sgl (F-VF) tied by Pedro Miguel 4/6/07 Hs-11 + Rg-4 & Cristobal Tr-2 on reverse. Some overall toning & minor edge wear o/w VF	Sc. \$ 100 <b>Ph</b>
390. PPC	#31 (VF) on photo side of ppc, RR Bridge over Chagres, <u>Tabernilla</u> 9/28/11 on both sides, addr to Coveleski. Message side toned o/w VF	Est. \$ 15
391. PPC	#31 (def) tied by <u>Station"A" Cristobal</u> 3/13/10 Hs-5 on Maduro card, Bas Obispo Scarce town	Est. \$ 50 <b>Ph</b>
392. PPC	#31 (def) tied by <u>Station"A" Cristobal</u> 2/26/10 Hs-5 on Maduro card, Ft. Las Bobedas cnrs bumped, st LL. Scarce town	Est. \$ 50 <b>Ph</b>
393. PPC	#31 (F-VF) tied by <u>Cristobal Sta A</u> 12/12/11 Hs-11. VF Scarce cancel	Est. \$ 50 <b>Ph</b>
394. C	#32 (F) tied by Tabernilla 10/18/10 Hs-11 on sm brown env., some wrkls L F	Est. \$ 20
395. C	#33 (F-VF) tied by Empire 12/30/13 on sm. cvr sl reduced @ T, tr back flap F-VF	Sc. \$ 40
396. C	#32,33pr (VF all 11 mm) mute cancels, Reg. cvr w Rm-1 on front, Empire 3/25/12 Rg-8, lt. Cristobal 3/26/12 Rg-? on back. VF	Sc. \$ 40+ <b>Ph</b>
397. C	#32pr,34 (F-VF) on neat sm blue Reg cvr, tied by mute cancels, Ancon Rg-? 5/14/12. F-VF	Sc. \$ 75+ <b>Ph</b>
398. C	#34pr tied by Cristobal 8/1/12 Hs-11 (overpaid?) sl.soiling on edges o/w VF	Sc. \$ 75+ <b>Ph</b>
399. C	#32(F),35(VF) tied by mute cancels on Reg. cvr, Cristobal Rg-7 & RgXL-3a, rear of env prt'd "On Board United Fruit Company's S.S. Turriasa" sl. edge wear VF	Sc.\$ 100 <b>Ph</b>
400. C	#38pr (VF) tied to sm cvr by Ft. Randolph 10/11/18 lt.toning, opened B, o/w VF	Est. \$ 10

**CANAL ZONE STUDY GROUP MAIL SALE #40**

<b>LOT No.</b>	<b>DESCRIPTION</b>	<b>VALUE</b>
401. LC	#38pr (F) from handmade BP, tied by Culebra 4/19/15 Hs-11, War Dept cc w/ Camp Gaillard return addr. VF	Est. \$ 10+
402. PPC	#38 (F) from handmade BP, tied by Corozal 3/26/14 Hs-11 on Vibert&Dixon ppc Empire YMCA VF	Est. \$ 10+
403. PPC	#38.B (F, sm nick LR) tied by fancy Balboa Heights 10/17/14 Hs-8 to ppc, "Chief Eng. Stevens Office, Culebra", Society of the Chagres prtd message. VF	Est. \$ 25
404. C	#39 (F-VF) sgl. From handmade BP tied by Cristobal 11/12/?, sl overall toning, pn on back, rear prt'd "Great White Fleet United Fruit Company Steamer Service	Est. \$ 10
405. LC	#39 (F-VF) tied by The Panama Canal RPO Tr 6 7/1 RMS-3 sl overall toning VF	Est. \$ 15
406. LC	#43 (F-VF) tied by The Panama Canal RPO Tr 6 3/25 RMS-3 sl overall toning VF	Est. \$ 25
407. C	#46 V pr (F-VF) tied by Balboa Hgts. 2/9/16 M-1, diagonal wrkls on cover, toned FSc.	\$ 500 <b>Ph</b>
408. PPC	#47 (F) tied to Maduro ppc by Cristobal 10/18/(20) to Czechoslovakia some soiling Sc.	\$ 350 <b>Ph</b>
409. C	#47 (F cent, oxidized) tied to neat small cvr Cristobal 10/30/20 M-2 VF	Sc. \$ 350 <b>Ph</b>
410. C	#47 (F-VF) tied by Ancon 11/19/20 M-1, signed F&B by Coveleski, cvr crs T&R	Sc. \$ 350 <b>Ph</b>
411. C	#48 (F-VF) tied by Ancon 5/28/20 M-1 on cvr front to England. Stamp overlaps T, causing some bent perms o/w F-VF. Scarce on cover.	Sc. \$ 1000 <b>Ph</b>
412. C	#52 pr from BP (VF) tied by Cristobal 2/23/21 M-2, some soiling, wrkls on edges F	Est. \$ 10
413. C	#53 sgl from BP (F, some oxidation) tied by Cristobal 1/23/19 to sm lt blue cvr F	Est. \$ 15
414. PPC	#55 sgl from BP (F-VF) on ppc tied by Balboa 10/5/23 Hs-11.trop spot on addr.side reportedly scarce usage on ppc F	Est. \$ 100 <b>Ph</b>
415. C	#56 (F) on mini-cover (25mm x 82mm) tied by Corozal 1/22/23 Hs-11 sl edge soiling	Est.\$ 10
416. PPC	#60 sgl from BP (VF) tied by Pedro Miguel 6/8 (year slug missing) on Maduro 476 F+Est.	\$ 10
417. C	#61 BP sgl (F) tied by Balboa 1/23/22 Hs-11 on sm cvr, 3mm TR edge missing, portion of back flap missing. Scarce BP on cvr.	Est. \$ 10+
418. C	#61 BP sgl (VF) tied by Ft. Sherman 5/18/22 Hs-11 Scarce on cvr VF	Est. \$ 15+
419. C	#62 (VF) tied by Ancon 5/18/23 M-1 on cover front to England. Some wrkls	Sc.\$50Est. \$ 20
420. C	#63, 56 BP sgl (F) tied to YMCA cvr by Corozal 1/8/23 Rg-12, w/ RM-4, Corozal & Cristobal Reg marks on back. opened ruff @ L, TL cnr missing, soiling	Sc. \$ 60
421. C	#71 H strp of 4 tied 2x by partial USS Shawmut, folded @ R, opened ruff @ T affecting R stamp. Unusual cancel	Est. \$ 10
422. C	#71 V pr tied by partial USS Camden, minor tr, bend UR, wrkl UL. Unusual cancel	Est. \$ 10
423. C	#71 blk of 4, 100 pr, 101 sgl, pr & blk of 4 on Reg. cvr Balboa Hgts. Reg 11/18/27, b/s Cristobal Reg 11/19/27. Overall toning, soiled L & R edges. Attractive franking	Est. \$ 15
424. C	#72 pays unsealed 3 <sup>rd</sup> class rate, tied by Cristobal 6/24/25 M-2 sm trop spots on F VF	Sc. \$ 30
425. LC	#72 (VF T margin sgl)pays unsealed 3 <sup>rd</sup> class rate, tied by Balboa Hgts 4/25/25 VF	Sc. \$ 30
426. C	#71(3 F),72(T margin blk of 6 F-VF),74(VG) tied by H bars on Reg cvr b/s Balboa Hgts 5/19/25 some soiling, opened B	Est. \$ 25
427. C	#71pr(F),73 blk of 4(VF),74(VF),75(F-VF) tied by V bars on Reg cvr b/s Balboa Hgts 10/17/24. Overall toning, some soiling, wrkls. Attractive franking.	Sc. \$ 45+
428. C	#86 (G-F) on airmail cvr tied by Cristobal 8/1/28 M-2 First Day for 5c rate, Steamer- Plane Service, b/s Cristobal 8/4/28 & New Orleans 8/9/28 VF	Est. \$ 25+
429. C	#86 (F-VF) on airmail cvr tied by Ancon 8/31/28 M-2, b/s Cristobal 9/1/28 M-2 & New Orleans 9/6/28. 1 <sup>st</sup> month of 5c Steamer-Plane rate. Minor wrkls. VF	Sc. \$ 20+
430. C	#86 (f nat SE T) on airmail cvr pays airmail service in U.S. Balboa Hgts. 1/2/29, b/s Cristobal 1/4/29, New Orleans 1/9/29. Includes letter from R.S.Carter to George Brett re order for stamps & covers. VF Interesting	Sc. \$ 20
431. C	#84(F),88(F-VF),105(First Day),106 on brown Reg cvr Balboa Hgts 10/3/28 V fold @ R not affecting stamps o/w VF	Sc. \$ 45+ <b>Ph</b>

**CANAL ZONE STUDY GROUP MAIL SALE #40**

<b>LOT No.</b>	<b>DESCRIPTION</b>	<b>VALUE</b>
432. C	#90 (F),106 nat SE B mute cancels on brown Reg cvr b/s Cristobal 7/2/31 and lt. Balboa Hgts. Few wrkls o/w F-VF	Sc. \$ 15
433. C	#91 (F) on Reg cvr cancelled w "CZ" in bars (like Mk-19d), b/s Ancon & Cristobal 6/8/31. Wrkls, opened 3 sides, repaired tr on back. Unusual.	Est. \$ 15
434. C	#75(crs),76(missing LR cnr),80(missing perfs TR) tied by V bars on Reg cvr attached to wrapper of package, b/s "Passed by Customs New York". Despite condition #80 is scarce on cover	Sc. \$ 500 Ph
435. C	#93(F-VF) on airmail Reg cvr tied by oval Balboa Hgts K-6, b/s Cristobal 12/8/30 VF	Sc.\$ 60
436. PPC	#96 (F) on Mogollon PPC tied by Cristobal 12/7/26 M-2 correct in-period usage VF	Est.\$ 10
437. C	#97 (F) V strip of 3 on brown cvr tied by Balboa Hgts. 5/1/27 M-2. Ruff opening @ T, wrkls, bumped cnrs. 3x 1 <sup>st</sup> class rate, returning approvals.	Sc. \$ 14+
438. C	#102 block of 4 (F),107 on Reg cvr, tied Balboa Heights 12/8/31 M-2, b/s Balboa Hgts, Cristobal Registered 12/8/31. Some toning, wrkls o/w F-VF	Est. \$ 10
439. C	#103 block of 4 (VF) on Reg cvr tied by Balboa Hgts 6/21/28, b/s Balboa Hgts & Cristobal Registered 6/21/28, some soiling around edges o/w F-VF Cat for block	Sc. \$ 42.50
440. C	#105,115,116(F-VF) on Reg cvr tied by concentric circles, b/s Balboa Hgts & Cristobal Registered 5/17/33. Minor wrkls LL cnr o/w VF	Est. \$ 50 Ph
441. PPC 2	Foreign destinations: 105 nat SE pr Curundu 6/6/49 pays PUAS rate to Bolivia; 139pr&C22 Cristobal 10/11/56 pays 16c airmail post card rate to Holland VF	Est. \$ 10
442. C	#106 (VF) tied by Cristobal 10/17/38 to Maduro Souvenir Folder VF	Est. \$ 10
443. C	#110 (F) on U10 pays airmail rate to U.S., Howard Field 7/7/42 US Army Censor 00104 + censor tape. B edge toned o/w VF	Est. \$ 10
443A. C	#110,105(F-VF)+US E15 on airmail Special Delivery cvr, tied Corozal 1/16/42F+	Est. \$ 35 Ph
444. C	#108,112 (VF-latter partially overlaps T of cvr) on short paid airmail cover to New Zealand. Tied by Cristobal 3/27/74. Red "T" in circle, green "Double T" marking. Interesting MS Taras Shevchenko cachet. sm tr @ T o/w VF.	Est. \$ 15
445. LC	#114 (VF) solo usage pays 2x airmail rate to Scotland. Tied by Cristobal 11/7/67, handstamped P.S.N.C. (Pacific Steam Navigation Co) cachet @ L. wrkls	Est. \$ 20
446. C	#117 (F) on Maduro Souvenir Folder, tied by Cristobal 1/3/41 SI-1 VF	Est. \$ 10
447. C	#117 strip of 3 + 2, 105 tied by <u>Rio Hato</u> (defaced Albrook Field) 3/23/42 Hs-14 on censored air mail <u>special delivery</u> cover, 6c Military concession rate + 10c special delivery fee paid by CZ stamps. Minor cnr wrkl o/w VF. Interesting.	Est. \$ 50+Ph
448. C 3	#118 str of 3 + #119 on 3 RPO covers: TR 6 3/8/43; TR 2 3/10/43; TR 4 3/11/43. RMS-6 Latter cover has previously unlisted brk "E" on middle stamp(Pos. 25)VF	Est. \$ 25
449. LC	#119 (F) pays unsealed 3 <sup>rd</sup> class rate, tied by Cristobal 8/12/48 SI-1 VF	Sc. \$ 35
450. C	#124 (F) pays double 1 <sup>st</sup> class rate, tied by Ft. Clayton 12/4/39 ruff open T, bends, soiling	Sc. \$ 12
451. C	#132(VG),105(X2,1dam),C10 (folded over edge of cvr) on cut down Reg airmail cover, paying 20c reg fee w/indemnity. Corozal 1/31/41 Rg-21, b/s Balboa RgAm-3.	Est. \$ 20
452. PPC	#139.A tied by Balboa 12/16/52 SI-6on ppc to New Zealand	Est. \$ 10
453. C	#140 (G),#117 on Reg. cvr from Tatelman, b/s Cristobal & Balboa Hgts Registered 2/20/50. Opened ruff @ R o/w VF	Est. \$ 15
454. C	#141 pr (VF) on airmail cvr to England, Balboa 8/21/48 VF	Est. \$ 10
455. C 7	#142-145 sm. group of Gold Rush Centennial covers, all commercial, incl.complete set of separate #s, plus 3 extras of #143. All airmail rates. The 18c (#145) is combined w/ #117 for the 21c rate to Scotland, opened ruff w/ portion of back flap missing. Scarce on cover.	Sc. \$ 26
456. LC	#152 pays unsealed 2oz 3 <sup>rd</sup> class rate, Cristobal 1/11/67. Illustrated Elks cc. VF	Est. \$ 10

**CANAL ZONE STUDY GROUP MAIL SALE #40**

LOT No.	DESCRIPTION	VALUE
457. C	#164a (VF) strip of 3 Stevens tagged on UA cvr, Rodman 8/10/79. Scarce.	Sc. \$ 150+ <b>Ph</b>
458. C	#164a w/#108 Stevens tagged on UA cvr, Fort Amador 8/9/79. Scarce	Sc. \$ 150 <b>Ph</b>
459. C	#C10 tied by commercial Chagres 7/16/43 Hs-14b, censor tape @ L. wrkls,soiling	Est. \$ 25
460. C	#C30 (VF) solo use pays airmail rate to England. Balboa 5/1/59 Hs-14i VF	Est. \$ 10
461. C	#C31 (VF)w/C11 & C23pr on Reg cvr to E. Germany. SL cancel, b/s Diablo Hgts & Balboa Registered 12/22/60 (25c airmail+50c Reg fee)	Sc. \$ 30+
462. LC	#C44+113pr on UC10 on Reg cvr, Albroom Air Force Base roller cancel R1-1 b/s Albroom AFB 5/3/68. UC10 in-period usage pays airmail rate, stamps Reg fee	UPSS \$ 50+ <b>Ph</b>
463. C	#C45 solo usage pays 20c airmail to Guatemala, tied by Rainbow City 11/28/71 VF	Est. \$ 10
464. C	#C46 solo usage pays 30c airmail to Norway, tied by Balboa 12/21/73 VF	Est. \$ 10
465. C	#J25+J26 tied to local business reply envelope, Cristobal 5/14/54 VF	Sc. \$ 30+
466. PO Form	#J29 block of 5 + J25 tied to PD Notice by Cristobal roller cancel, & Cristobal DC-10 VF	Est. \$ 75

**OTHER COVERS**

**APO**

467. LC	US #C25 V pr tied by 2 strikes of Entw. MPS-3a(APO # excised), Quarry Hgts (APO 834) CC, boxed "Official Mail" h/s @ L + 3 magenta strikes of boxed "WD Essential Official/AIR MAIL". V crs @ L affects nothing. F-VF	Est. \$ 50 <b>Ph</b>
---------	---	----------------------

**CENSORED**

468. C 3	CZ #C10 nat SE Balboa 5/5/42 w/ CZ Examiner #13122 tape @ L; inbound cvr from Bermuda, b/s Ft. Davis 8/5/41 w/ Brit Examiner #449 @ L; US #C25(dam), tied by U.S.Navy 9/21/42 Entw. MPS-N-2 w/dbl circle Naval Censor. Latter cvr has piece missing UL cnr, others VF.	Est. \$ 25
----------	---	------------

**SEA POST**

469. C 3	Three different Entw. SP-4,SP-5,SP-11(SS Cristobal), some wrkls, toning, latter trimmed @ L. Gen. F	Est. \$ 25
470. C	Entw. SP-11 SS Ancon 1/21/29 south ties US #649, add'l h/s "RECEIVED IN SEA POST SERVICE UNDER COVER". Overall toning o/w VF	Est. \$ 15

**PAQUEBOT**

471. C 10	ten diff. on US,CZ&Cuba stps, 2 w/UFC purser h/s, 4 Cristobal P-1&P-2, 3 Balboa P-1&P-5, 3 "Posted on the High Seas", Gen F-VF, 2 ratty	Est. \$ 50
-----------	--	------------

**SHIP CANCELS**

472. C	#106 tied by SS City of New York 6/1/30. Byrd Antarctic Expedition cachet sl. toning o/w VF	Est. \$ 15
473. C	#117 tied by Balboa 12/17/45 M-2 w/ accompanying USS Salerno Bay (CV) on cacheted "First Ocean to Ocean Aircraft Carrier Mail Service" minor cnr bumps VF	Est. \$ 20
474. C 42	US Navy Ship cancels in the CZ- 39 diff. + 3 related. Mostly from 1930s.Gen. F-VF	Est. \$ 75

**MAIDEN VOYAGE**

475. C 6	SS Panama, SS Cristobal, SS Ancon (3), Santa Rosa, wrkls, bumped cnrs, toning F	Est. \$ 10
----------	---	------------

**SPECIAL EVENT**

476. C	#100 tied on Ft. Davis Opening Day Cover 7/1/29 F-VF	Est. \$ 15
477. C	#105 tied on Madden Dam Opening Day Cover 1/2/32 straightline. sl toning o/w VF	Est. \$ 15 <b>Ph</b>
478. C	#117(x2) tied on signed, cacheted cvr w/Chagres Opening & Closing Day cancels VF	Est. \$ 50
479. C 2	Last Day of The Panama Canal RPO Tr 2 & 3 5/15/54 cancels U16s, VF	Est. \$ 10
480. C 12	CZPS Last Day of Operation, 12 different towns, various frankings VF	Est. \$ 25

**CANAL ZONE STUDY GROUP MAIL SALE #40**

<b>LOT No.</b>	<b>DESCRIPTION</b>	<b>VALUE</b>
<b>OFFICIAL BUSINESS &amp; PERMIT MAIL</b>		
480A.C	Navy Dept. Penalty Cover postmarked Coco Solo 10/27/48 w/ Navy Day Cachet, addressed to General Delivery, Cristobal, b/s Cristobal C.Z. – City 10/28/46 <u>scarce</u> Entw. CM-1, also return to sender marking on F & Cristobal 10/29/48 SI-2	Est. \$ 25 <b>Ph</b>
481. C 27	Lot of 27 OB envelopes (16 sm,11 lg), 1935-1956, most w/ penalty clause, some flaws, wrkls. Ave F	Est. \$ 25
481A.LC 3	Registered penalty covers: Ft. Gulick 4/7/54, Diablo Hgts.4/5/54, Gamboa 4/9/54. Various b/s F-VF	Est. \$ 10
482. C 31	Lot of 31 Permit envelopes (25 sm, 6 lg), mostly diff #s or wording Ave F+Est. \$	25
<b>INBOUND COVERS TO CZ</b>		
483. C	1904 cover from Mexico (Tehuantepec RR cc) addressed to Rear Admiral John F. Walker (ICC Chairman) in Colon, forwarded to Washington, D.C. 2 “T” in circle h/s, various h/s or ms due ratings (“12.”,“1/2”,“50 ctmo”,“10c”) w/ US 10c postage due stamp, numerous b/s, incl. Mexico 10/5/04, Colon Transito 10/24/04, Ancon 10/24/04, Cristobal 10/26/04 + overlapping New Orleans, New York & Washington machine cancels. Faults, including missing UL cnr, V cr, trs. Nevertheless, a very interesting historical item.	Est. \$ 25+ <b>Ph</b>
484. C	1905 PPC from Hanover, Germany addressed to Culebra, New Orleans 6/17/05 Transit CDS, Culebra Hs-1 6/28/05. Some toning F+	Est. \$ 10
485. C	1943 airmail cvr from British Guiana, censor tape @ L “P.C. 90” , “Examiner II 8”. b/s magenta “Cristobal C.Z. – City 10/27/43” similar to Entw.CM-1, but with “V” in killer bars. Opened ruff @ T, with portion missing. Scarce	Est. \$ 50 <b>Ph</b>
486. C 108	Lot of 108 inbound covers ca. 1930-1940 from 33 diff counties, 10 WW II censored, 6 registered. Lots of fun with this one!	Est. \$ 100
<b>POSTAL HISTORY LARGE LOTS</b>		
487. C 9	Mixed bag: #56 Bal.Hgts.5/17/23; #117 Madden Dam 8/15/34, Ancon 5/15/34, Ft. Davis 10/19/37,Cristobal 11/23/38; #C10 Albbrook Field 4/9/41; #C11 Ancon 5/15/36 plus 2 extra ratty airmail registered covers.	Est. \$ 15
488. C 46	Accumulation of Panama overprinted CZ stamps on covers, 1907-1924. Mixed condition, incl toning, wrkls, some cut down, opened ruff.	Est. \$ 75
489. C 12	1905-1925 assortment, many w/ flts, but interesting, incl. #10pr Ancon 8/2/05, #11Ancon”4” 2/10/06, #12 Cristobal to Jamaica 1/10/06, #16a pr Ancon Sta.A 8/30/06, #17a Ancon Sta A 6/13/06, #23 Ancon to Newfoundland 11/23/09, #32 Ancon-Cristobal RMS 2/7/11, #32 Bas Obispo 4/15/11, #32 Pedro Miguel 10/4/11, #39 bklt sgl Ft. Grant 11/3/17, #74 (dam) Ancon to British Guiana 12/13/24, #71 SE on U8 Gatun 3/28/25.	Est. \$ 50
<b>P.O. FORMS &amp; CZPS ANNOUNCEMENT CARDS</b>		
490. 8	Return Receipt Cards: 4 local (Ft. Gulick,Ft. Amador), I unused, 3 w/added airmail postage, incl. 1 w/ C35 (Sc.\$12.50) ret. from Spain. Gen. F-VF	Est. \$ 40 <b>Ph</b>
491. 10	Mailing Tags: Official Registered Mail from various towns to CZ Treasurer, 1912-13, incl. Ancon(2),Balboa,Bas Obispo,Corozal,Cristobal(2),Culebra, Gatun,Gorgona. Various Reg. markings. Some wrkls, trs, soiling. G-F	Est. \$ 25

**CANAL ZONE STUDY GROUP MAIL SALE #40**

LOT No.	DESCRIPTION	VALUE
492. 16	CZPS Forms: Notice of Charge Against Deposit,1974;Money Order Receipts(2), 1961-2;Money Order Statement Cards(2 unused),1941;Authority for Accepting Postal Savings Deposits(2 unused cards),1943;Receipt for P.O. Box Rental-Gatun (2),1970,1978;Receipt for Domestic Insured Parcel,Cristobal,1969; "Empty Sacks" Tags,Cristobal(2),General,New York;Booklet:Canal Zone Postage Stamps,ca1938 worn. Overall gen. F-VF	Est. \$ 25
493. */o 10	CZPS Philatelic Agency Announcement Cards: Finder #10,13,16(2),18,34(used),39, 48,P1a(used),P2(used). F-VF	Est. \$ 40
494. */o 54	CZPS Philatelic Agency Announcement Cards: all different incl "H" set(3), "P" set (6) incl. dropped "0" in "300"). Missing only 5 cards for completion (Finder #14, 23,37,38,45). Earlies have contemporary cancels, others UA,Add/uncanceled F-VF	Est.\$ 200
<b>PICTURE POST CARDS &amp; SOUVENIR FOLDERS</b>		
495. PPC 6	Used PPC w/ #22 & #31 (1 handmade BP sgl). CZ & Panama scenes F-VF	Est. \$ 25
496. PPC 7	Unused , Panama & CZ, incl. 6 Maduro 5000 series VG-F+	Est. \$ 25
497. PPC 2	Early unused, depicting Pres.Roosevelt's 1906 visit-1 B&W by Bienkowski, 1 color by Maduro. F-VF	Est. \$ 50 <b>Ph</b>
498. PPC 6	Diff., all w/ Sea Post cancels: Entw. SP-2(4),SP-4. Some lt. but readable. F-VF	Est. \$ 90 <b>Ph</b>
499. PPC 11	Used, mostly early, CZ#16,22,31,38. Bas Obispo,Corozal,Gatun,Gorgona,Las Cascadas,Pedro Miguel,Ancon,Cristobal Gen. F-VF	Est. \$ 100
500. PPC 14	Realphoto cards, CZ & Panama scenes. Mostly unused, F-VF	Est. \$ 60
501. PPC 7	Maduro "Tan Borders" + Tivoli card, Mostly unused, F-VF	Est. \$ 35
502. PPC 20	"White Border" cards, 15 Maduro,2 Godhumal, 1 ea. Royalando,Gutburlet, Foto Fplateau. Gen. F - F+	Est. \$ 75
503. PPC 15	Mostly unused CZ & Panama scenes, incl 7 Maduro, 2 Lewis. Gen. F-VF	Est. \$ 50
504. PPC 40	Different CZ scenes, mostly construction views, some early, few flts, gen F	Est. \$ 150
505. PPC 22	17 different + 5 dup,mostly unused, picturing ships in the canal & locks. Gen. F-VF	Est. \$ 50
506. PPC 47	Modern PPC views of CZ & Panama, sm. dupl., mostly unused F-VF	Est. \$ 50
507. PPC 34	Mostly Maduros unused. Panama & canal construction era scenes. Few minor flts Gen. F-VF	Est. \$ 75
508.	Souvenir Folder, "Panama and the Canal Zone - Crossroads of the World",contains 9 dbl-sided color fold-out cards. Curt Teich 1944. Postage noted as 1 1/2C VF	Est. \$ 15
509.	Souvenir Folder, "Beautiful Panama City and Vicinity", contains 1 dbl-sided color fold-out cards, Vibert & Dixon 1940. Some wear on outer env. Cards F-VF	Est. \$ 15
510.	"Souvenir Folder of the Panama Canal", contains 11 dbl-sided color fold-out cards, mostly construction views 1912. Vibert & Dixon. Some wear on outer envelope, 1 card damaged, o/w F-VF	Est. \$ 15
511.	"Souvenir Folder of the Panama Canal", contains 9 dbl-sided cards. Maduro ca 1920 Some wear on outer envelope, cards F-VF. Addressed but not mailed "postage 1c"Est.\$	15
512. 3	Different mini-booklets (3"x4"), containing 6-10 color prints of canal & Panama views ca.1990.	Est. \$ 15
513.	Souvenir Folder, "The Panama Canal - the World's Greatest Engineering Feat", contains 24 6.5 x 8.5 in. color photos of Panama & the Canal Zone. Maduro ca.1915 covers worn & some pictures have trop. st.	Est. \$ 10
514.Env 8	Crosby "photo" cachet envelopes, unused, 7 diff + 1 dupl., most w/ CZ themes, 3 "Keep 'Em Flying" WW II patriotic. couple toned, mostly F-VF	Est. \$ 10+

**CANAL ZONE STUDY GROUP MAIL SALE #40**

LOT No.	DESCRIPTION	VALUE
<b>PHILATELIC &amp; HISTORICAL LITERATURE, DOCUMENTS</b>		
515.	Book: "Canal Zone Stamps" by Plass, Brewster & Salz, original hardbound Edition (1986), 364 pp. Includes 2015 Checklist, 54 pp. <i>From the Gibbs Philatelic Library for the benefit of the CZSG.</i> VF	Est. \$ 75
516.	Books: "Canal Zone Postal Stationery", 2009 & 2014 Editions, published by the UPSS. <i>From the Gibbs Philatelic Library for the benefit of the CZSG.</i> VF	Retail \$ 28
517.	Book: "U.S. International Postal Rates, 1872-1996" by Beecher & Wawrukiewicz softbound 402 pp. <i>From the Gibbs Philatelic Library for the benefit of the CZSG.</i> VF	Retail \$ 44
518.	Book: "Canal Zone Postage Stamps" by E.I.P. Tatelman, Panama Canal Press, softbound 439 pp. <i>From the Gibbs Philatelic Library for the benefit of the CZSG</i> VF	Est. \$ 10
519.	Books: Selection of CZSG Handbooks #1, 8-15. <i>From the Gibbs Philatelic Library for the benefit of the CZSG.</i> VF	Retail \$ 63
520.	Books: "The Canal Zone Philatelist" 1953-2012, special hardbound edition, 185 issues w/ index. <i>From the Gibbs Philatelic Library for the benefit of the CZSG.</i> VF	Est. \$350
521.	Book: "Report of the Isthmian Canal Commission 1899-1901", (The Walker Commission) U.S. Gov't Printing Office (1904) hardbound 688 pp, with accompanying cardboard container holding 85 plates (maps, drawings, etc.) Book covers & spine deteriorated, but stabilized w/ kraft paper cover, pages sound. Plate container also very worn but plates O.K. An extremely important and scarce historical document, in which the ICC recommended the Nicaragua route!	Est. \$ 100
522.	Document: original 8/30/05 typed letter/memo from Manager, ICC Dept. of Construction & Engineering, Labor Quarters Branch to John P. Stevens, Chief Engineer re payment for postage stamps on mail to "Labor Agents". Several handwritten follow-up notes on bottom & back. Typical file holes, Paper clip marks. Interesting historical item.	Est. \$ 50
523.	Document: original carbon copy of 11-page 12/28/32 memorandum from the Panama Office of the Director General of Posts & Telegraphs, detailing "Biographies of Personages Appearing on Certain Postage Stamps Surcharged 'Canal Zone'" and detailed information concerning "the Mottoes..on other Stamps". Typical file holes, staple holes, 2 trs @ tops of pages (file removal), wrkls on thin paper. Interesting prime source document.	Est. \$ 50
524.	Document: original carbon copy of 2 page 6/8/48 reply letter from ABNCo to Chief of Office, the Panama Canal, "listing quantities and denominations of postage stamps supplied to..Panama and used in the Canal Zone...1920 to 1924." Typical file holes, staple marks, wrkls on thin paper. A wonderful prime source document.	Est. \$ 50