



34th Mail Sale

of the

Canal Zone Study Group



Closes 5:00 P.M. Pacific Time
 Sunday, October 29, 2006



AUCTION CATALOGUE

This entire catalog with color illustrations is available at CZSG.org. Last year's complete catalog with prices realized is also posted there. After this Sale, its prices realized will be posted there too.

Table of Contents

| | | | |
|--------------------------|---|---------------------------|----|
| Definitive Stamps | 1 | Revenues | 10 |
| Air Post Stamps | 5 | Postal Stationery | 10 |
| Postage Due Stamps | 5 | Postal Stationery Cards | 11 |
| Plate No Blocks/Singles | 6 | First Day Covers | 11 |
| Large Stamp Lots | 7 | First Flight Covers | 12 |
| Perfin Stamps | 7 | Special Event Covers | 12 |
| Official Perf P Stamps | 7 | Covers | 12 |
| Official Air Post Stamps | 8 | APO & Navy Covers | 14 |
| Official Ordinary Stamps | 8 | Other Covers & Phil Items | 14 |
| Post Office Seals | 8 | Philatelic Lit & Catalogs | 15 |
| Proofs & Specimens | 8 | Picture Post Cards | 15 |
| Precancelled Stamps | 9 | CZ Memorabilia | 15 |

| Lot No. | Description | Estimate / Catalog Value \$ |
|--------------------------|--|-----------------------------|
| DEFINITIVE STAMPS | | |
| 1 * pair | 1 pair w/ Panama reading down, pos 89 invert N & pos 90 invert V for A, cert says NG but may have gum traces, R stamp sm tear B & blunt perf T, centered to T & L, PF cert for strip of 4, Ph | 1,100.00 Scott |
| 2 o | 1 Panama reading down, VF, APS cert, Front Ph | 425.00 Scott |
| 3 o strip | 2 strip of 4 tied to sm piece of wrapper, SE at B (pos 97 - 100), toned, sp on pos 97, F+, APS cert, Ph | 700.00 Scott |
| 4 * | 3, TG, HM, clean & fresh, F-VF+, APS cert, Ph | 350.00 Scott |
| 5 o | 3, lt cancel, well-centered, clean & fresh, pn initials BWB rev, APS cert, Front Ph | 250.00 Scott |
| 6 * | 4 w bottom half of A2 & M missing, OG, heavy HM, F-VF | 35.00 Scott |
| 7 o | 4 pinkish K-1 cancel, lg margins, VF, Ph | 22.50 Scott |
| 8 o | 4 w/ pl #2061, lt cancel, fresh & sound but perfs just cut at R | 22.50 Scott |
| 9 * | 5, fresh OG, sm HR, lg & even margins, tiny light nat inclusion R, beautiful & VF+, Ph | 30.00 Scott |
| 10 * | 5 w/ pl #2221 B, not in Durland or CZSG list, Napp's says # "sent to press but unreported", horiz cr barely visible front, dist TG, HM, new find!, Front Ph | 250.00 Est |
| 11 * | 5 w/ pl # 2076 B, OG, HR, fresh, F-VF+ | 30.00 Scott |
| 12 * | 5 w/ full arrow & guideline B & R, OG, HR, F-VF | 30.00 Scott |
| 13 o | 5 w/ red postmark, SE at R, blunt perf LL, lg margins, fresh, F+ | 25.00 Scott |
| 14 * | 6 w/ pl #1886 B, OG, HM, fresh, blunt perf LR, F+, Ph | 110.00 Scott |
| 15 o | 6, lt cancelled in magenta, blunt perf T, o/w F-VF+, Ph | 65.00 Scott |
| 16 o 2 | 6 two unusual position items: 1) SE guideline LEFT, strong perfs, F-VF, 2) SE guideline T&R, lg thin, lt cancel, F+ appearance, Ph | 130.00 Scott |
| 17 * | 8, OG, HM, F-VF, Ph | 150.00 Scott |
| 18 * | 8, OG, lt HM, lt gum crease, F-VF, Ph | 150.00 Scott |
| 19 o 3 | 9 three copies w/ diff color cancels: 1) SON bright blue Ped Mig Hs-1 11/28/190_, tr UR, 2) red killer, F-VF, 3) purple killer F-VF+ | 10.00 Est |
| 20 * B4 | 9b ZONE antique LL in blk w/ normal, deep diagonal bend on var not visible from front, dried up OG, sm discolored spot on B perf of var, F+ appearance, Ph | 70.00 Scott |
| 21 o 7 | 9-10 normal & 1¢ w/CANAI, 2¢ spaced A-L, 2¢(2) w/ broken letters, gen lt cancels, F-VF | 10.00 Est |
| 22 o 2B4 | 9-10 used blks, lt cancels, centered F, minor perf faults but nice looking | 30.00 Scott |

DEFINITIVE STAMPS (contd)

| | | | | |
|----|---------|--|----------|-------|
| 23 | * | 10 'C' missing from op shift (10th column so no 'C' at R), OG sm HM, F-VF, Ph | 20.00 | Est |
| 24 | * | 10 split op (C of CANAL at R), OG, NH, F-VF | 20.00 | Est |
| 25 | * | 10a inverted op. glazed OG w/ some lt toning, face w/ v lt even toning, strong perfs, F-VF, Front Ph | 225.00 | Scott |
| 26 | * | 11 dk carm op, nice OG, sm HM, fresh, F-VF | 7.50 | Scott |
| 27 | * | 11b inverted op w/ bar B, OG, lightest touch of trop, o/w NH, perf cut T, HM & pn on rt selvedge, PF cert, Ph | 475.00 | Scott |
| 28 | o | 12 PAMANA reading up (12.7), lt cancel, blunt perf LL, F-VF, Ph | 70.00 | Scott |
| 29 | o | 12 dk carm op w/ antique N & broken C (12.Fb.2, pos 65), well centered, lt cancel, 2 blunt perfs, F-VF | 12.00 | Est |
| 30 | o | 12 3-PANAMAs op shift (12.26), sm tr B not easily seen front, o/w F, APS cert | 10.00 | Est |
| 31 | * sheet | 12, 12a, 12b and varieties: almost complete pane (pos 100 missing) of Stage VI CZ op on dk carmine Panam op (top pane w/ bottom SE and inscrip L & R). Also includes PAMANA reading up (2), antiques L & Z, Z, N, double-lined N (2), creases affect UL block 12; rears pos 12 & 81, some hinging esp of selvedge, slight TG, F-VF centering throughout. | 250.00 | Est |
| 32 | * pair | 12b ZONE antique in pair w/ normal, TG, apparently NH, F-VF, Ph | 75.00 | Scott |
| 33 | * B4 | 13 dk carmine L margin block (13.E), beautiful OG, NH, fresh, F-VF+, Ph | 110.00 | Scott |
| 34 | * | 13 w/ R Panama 5mm below bar, OG, heavy HM, several perf tips toned, F, Ph | 150.00 | Scott |
| 35 | o B6 | 13 used blk of 6 of dk carmine Stage IV (13.Ea) (pos 53-55, 63-65), w/ purple hs "PASSED/ FREE OF DUTY/N.Y.P.O./I.W.C.", several creases & some blunt perfs, nice appearance, unusual, Ph | 62.50 | Scott |
| 36 | * | 15 w/ Type B "8", OG, paper fragments rev, HM, perfs strong, fresh face, F-VF, APS cert, Front Ph | 2,600.00 | Scott |
| 37 | * | 15 w/ Type B '8' (pos 48) CZSG 15.4, lightly trop OG, NH, fresh, blunt perf T & LL corner, v lt handstamped initials on rev, F-VF, PSE cert for block, Ph | 2,600.00 | Scott |
| 38 | * B4 | 16a.A block from top half of sheet (pos 3-4 & 13-14), dried up TG, o/w fresh, LL stamp unlisted 3rd A dropped in R Panama, F-VF | 9.00 | Scott |
| 39 | * B10 | 16b blk of 10 (pos 41-45 & 51-55) w/ 2 narrow spacings of "1 cts" and one inverted N (16b.5 & .6), dried TG, no apparent hinging, ragged perfs T, o/w F-VF | 25.00 | Scott |
| 40 | * B6 | 16b block (pos 88-90 & 98-100) w/ LR stamp CANAL 13.25mm (16b.4), dried up gum, o/w fresh, F-VF | 14.50 | Scott |
| 41 | * B4 | 17a blk LR stamp dropped A (17a.7, pos 82) dried gum, no sign of hinging, F-VF | 14.00 | Scott |
| 42 | * | 17b w/ spaced Z-O, dried up gum, HM, fresh, F-VF | 20.00 | Scott |
| 43 | * B4 | 17b block (pos 23-24 & 33-34 OR 73-74 & 83-84), dried up gum, F-VF, Ph | 90.00 | Scott |
| 44 | * | 18, OG, HR, F-VF, Ph | 55.00 | Scott |
| 45 | * pair | 18b Panama down in pair with normal (18b.2), due to slight shift long Panama (.1b) shows R, nice OG, lt HR, fresh, F-VF, Ph | 175.00 | Scott |
| 46 | * | 19 HR, dried gum, o/w fresh, strong perfs, nice centering, VF, Ph | 55.00 | Scott |
| 47 | * pair | 19a CANAL antique in pair w/ normal, dried TG, lt HM, Panama op shifted, VF+, Ph | 265.00 | Scott |
| 48 | * | 19d PANAMA up and down, dried TG, o/w NH, F-VF, Ph | 110.00 | Scott |
| 49 | * | 19 var w/o CZ op ("printers waste"), TG, HR, one pp LL, o/w F-VF | 30.00 | Est |
| 50 | * | 20, TG, HM, fresh, F+ | 45.00 | Scott |
| 51 | * B4 | 20a antique CANAL (LL) in blk w/ normal, lightly TG, LH, VF, Ph | 335.00 | Scott |
| 52 | * B4 | 20b antique ZONE (UL) in blk w/ normal, TG, T two LH, B two NH, F-VF, Ph | 335.00 | Scott |
| 53 | * | 20c 8 cts missing w/arrow on selvedge (pos 100, SE at B, deep thin & sm hole B, well-centered, very dried TG, only 50 issued, Ph | 800.00 | Scott |
| 54 | * | 21, OG, HR, F-VF | 25.00 | Scott |
| 55 | * pair | 21 pair w/ inscript B, 1) R stamp: OG, NH, F-VF, 2) L stamp DG, NH, F-VF+, Ph | 50.00 | Scott |
| 56 | * B8 | 22 (7.2mm spacing, hard paper) bottom inscript blk of 8, dried gum, NH, F-VF, | 20.00 | Scott |
| 57 | * B4 | 22 (7.2mm spacing, soft paper) B inscript blk, OG, NH, VF, Ph | 10.00 | Scott |
| 58 | * pair | 22 w/ 'ONE' w/ normal, lt trop NH OG, sm toned spot rev of var, F-VF+, Ph | 80.00 | Scott |
| 59 | * | 22e double op on 6.8mm printing, NG, F-VF+ , Ph | 275.00 | Scott |
| 60 | o | 23 SON Ancon Sta A, Mar 27, F+ | 8.00 | Est |
| 61 | * | 27 spaced C-A, OG, NH, fresh, F-VF | 12.50 | Scott |
| 62 | o | 26 7.2mm spacing, lt cancel, F-VF+ | 8.00 | Scott |
| 63 | * | 27, OG, lt HM, fresh, F-VF | 12.50 | Scott |
| 64 | * | 28, dried up gum but fresh, strong perfs, F-VF | 45.00 | Scott |

DEFINITIVE STAMPS (contd)

| | | | | |
|-----|--------|--|----------|-------|
| 65 | * | 29 spaced C-A, OG, NH but shallow thinning, fresh, strong perfs, centered F+ | 40.00 | Scott |
| 66 | * | 30, OG w/ lightest trop gum, NH, fresh, F-VF, Ph | 40.00 | Scott |
| 67 | * B4 | 30 blk w/ spaced C-A (UR), OG, very LH upper stamps, lower NH, EF, Ph | 200.00 | Scott |
| 68 | * | 31c handmade booklet pane, fresh OG, NH, 'natural' blunted perfs along L and 'SE' along B from separation of booklets, F+, Ph | 575.00 | Scott |
| 69 | o pair | 32 pair from 9.2mm spacing printing, L stamp w/ 10mm spacing, a bit toned, centered to B | 7.00 | Est |
| 70 | * pair | 32a vert pr imperf horiz, v slightly trop OG, v fresh, HM, VF, PF cert, Front Ph | 1,000.00 | Scott |
| 71 | o | 35, v lt red postmark, one blunt perf B, F+ | 20.00 | Scott |
| 72 | * | 36b 10 cts omitted, TG, HR, F-VF, PSE cert for blk, Ph | 325.00 | Scott |
| 73 | * | 37, OG, HR, fresh, F-VF, Ph | 55.00 | Scott |
| 74 | o B4 | 39 used blk w/ 2 strikes of Paraiso Hs-11, B pair horiz crease, F-VF appearance | 8.00 | Scott |
| 75 | * | 39d op inverted on vermilion shade, OG, NH, fresh, VF+, Ph | 175.00 | Scott |
| 76 | * | 39d op reading down, OG, NH, F+, Ph | 175.00 | Scott |
| 77 | * | 39e inverted center & op, mildly trop OG, HM, perfs cut L, Ph | 600.00 | Scott |
| 78 | * | 40 9.2mm spacing, OG, HR, fresh, F+ | 22.50 | Scott |
| 79 | * 4 | 42-45, OG, NH, fresh, each centered F | 52.00 | Scott |
| 80 | o | 43 w/ 10mm op spacing (43.3), centered L, a few wrinkles, F | 18.00 | Est |
| 81 | * | 45, lt TG, sm HR, fresh, F-VF+ | 22.50 | Scott |
| 82 | * | 46 1st prt, OG, cert says hinged but undetectable to us, VF, 2 PF certs, Ph | 160.00 | Scott |
| 83 | * | 46 1st prt, fresh OG, NH, F, Ph | 160.00 | Scott |
| 84 | * | 46a op reading down, TG, rounded corner LL, no hinging visible, F, PSE cert, Ph | 375.00 | Scott |
| 85 | * | 46b double op, TG, NH, blunt perfs BR, F+, Ph | 350.00 | Scott |
| 86 | * | 47, full v slightly toned OG, v light HM, one blunt perf B, tiny lt purple ink speck on frame line near R '2', fresh, three big balanced margins, perfs into B inscript but clear of frame, much better than most mint #47s, F+, Front Ph | 3,250.00 | Scott |
| 87 | o | 47 w/ dot in middle of O of ZONE (appears to be same ink as op), 'chewed' corner UR, perfs cut B, Ph | 100.00 | Scott |
| 88 | o | 47, sm & lt edge wear UL, o/w sound & clean, centered F, Ph | 100.00 | Scott |
| 89 | * | 48 1st prt, v lt trop OG, NH, F-VF, PSE cert, Ph | 500.00 | Scott |
| 90 | * | 48 1st prt, dist TG, HR, F+, Ph | 100.00 | Est |
| 91 | o | 49, segmented cork cancel LL, lg margins, F-VF | 5.50 | Scott |
| 92 | * | 50, TG, HM, one blunt perf B, F+, Ph | 55.00 | Scott |
| 93 | * | 51, v lightly trop OG, v lt HM, lt pn mark rev, fresh, F+, Ph | 45.00 | Scott |
| 94 | * | 52a, OG, NH, VF, Ph | 175.00 | Scott |
| 95 | * | 52a, OG w/ trivial glazed area, o/w NH, fresh, F-VF+, Ph | 175.00 | Scott |
| 96 | * | 54, fresh OG, NH, F-VF, Ph | 150.00 | Scott |
| 97 | * | 54, pristine OG, NH, blunt perfs B & T, o/w F-VF+, Ph | 150.00 | Scott |
| 98 | o | 54, even margins, lt & neat postmark, VF, Ph | 35.00 | Scott |
| 99 | o | 54, neat cancel, one blunt perf T, o/w VF | 35.00 | Scott |
| 100 | * | 55, fresh OG, NH, F-VF | 22.50 | Scott |
| 101 | * BkPn | 55e booklet pane w/o tab, tissue adhering to part, sm light crease to tip of LR corner, fresh & well centered, F+, Scott \$1750, Ph | 400.00 | Est |
| 102 | * | 56b double op one inverted, DG, HM, a few blunt perfs, F, Ph | 650.00 | Scott |
| 103 | * | 57, v. slightly TG, NH, fresh, VF, Front Ph | 300.00 | Scott |
| 104 | * B4 | 58 block, DG from multiple hinging, HMs on each stamp, fresh & bright on face, well centered, F-VF, PSE cert, Ph | 1,375.00 | Scott |
| 105 | * | 59, nice OG, HM, F-VF, Ph | 175.00 | Scott |
| 106 | * | 60a CANAL double, lightly trop OG, HM, fresh, well centered, blue oval handstamp on rev, EF, PF cert, Front Ph | 2,500.00 | Scott |
| 107 | * | 61a inverted op, lightly trop gum, fresh, one slightly blunt perf R, o/w VF, Ph | 200.00 | Scott |
| 108 | * | 61a inverted op, TG, HM, sm handstamped initials rev, blunt pert UL, F, Ph | 200.00 | Scott |
| 109 | * B4 | 61 UR order #F-6785 block, OG, some separation which has been reinforced by two hinges, fresh, F-VF, Ph | 15.00 | Est |
| 110 | * | 62a inverted op, dried TG, o/w NH, F+, Ph | 60.00 | Scott |
| 111 | * | 63a, lightly tropicalized OG, no indication of hinging, fresh, VF, Ph | 90.00 | Scott |
| 112 | * | 65, OG, HR, F-VF, Ph | 70.00 | Scott |
| 113 | * | 66, lightly tropicalized OG, HM, F-VF+, Ph | 150.00 | Scott |

DEFINITIVE STAMPS (contd)

| | | | | |
|-----|---------|--|----------|-------|
| 114 | * | 66, OG, HRs, fresh, F-VF, Ph | 150.00 | Scott |
| 115 | * | 67, lt dist OG, o/w NH, fresh, F, Ph | 500.00 | Scott |
| 116 | * | 67, TG, HM, sm tear TL, F+ centering, Ph | 500.00 | Scott |
| 117 | o | 67, lt cancel at B only, blunt perfs T, o/w F+, Ph | 200.00 | Scott |
| 118 | o | 67, two blunt perfs R, o/w F-VF, Ph | 200.00 | Scott |
| 119 | * B4 | 69, OG, couple of gum skips, NH, fresh, VF | 35.00 | Scott |
| 120 | * 7 | 70-73, both prt'gs for all exc 72, each VF exc 73.B F+, 71-72 NH, rest TG or HM | 25.00 | Scott |
| 121 | o 9 | 70-74, 2 of each exc 5¢, all printings & two shades of 71, lt cancels, F-VF | 17.80 | Scott |
| 122 | * B6 | 71b ZONE inverted in blk w/ normal, SE as always, tissues remnants over much of rev but do not protrude edges, fresh, F-VF, Ph | 350.00 | Scott |
| 123 | * pair | 71c & 71d in vert pair (CANAL only & ZONE CANAL), heavy TG, HR in selvage, o/w NH, strong perfs, fresh, centered to R as usual, F+, PF cert, Front Ph | 2,250.00 | Scott |
| 124 | * | 72 w/ huge workup across middle of stamp,HR, F+ | 15.00 | Est |
| 125 | o strip | 73.3, op on left stamp 1mm below others (73.3 2nd prt), a few blunt perfs, F | 18.00 | Est |
| 126 | * | 74, lt TG, o/w NH, fresh, nicely centered, VF+, Ph | 19.00 | Scott |
| 127 | * | 74, OG, HR, strong perfs, fresh, VF+, Ph | 19.00 | Scott |
| 128 | * | 75, dried TG, blunt perf UR, fresh, well centered, F-VF | 45.00 | Scott |
| 129 | o | 75 w/ 2 partial Ft Clayton DC, mild (pre-printing?) wrinkling LL corner, o/w F-VF | 25.00 | Scott |
| 130 | * | 76 1st prt clean-cut op (76.A) DG, perf crease, well centered, F-VF | 35.00 | Scott |
| 131 | * | 76 2nd prt worn op (76.B), OG, HM, well centered, F-VF | 35.00 | Scott |
| 132 | o | 76 1st prt (76.A), face-free cancel, VF, Ph | 32.50 | Scott |
| 133 | o | 76 2nd prt (76.B), moderate cancel, fresh, F-VF+ | 32.50 | Scott |
| 134 | * | 77, OG, lt HM, fresh, VF, Ph | 30.00 | Scott |
| 135 | o | 77, lt cancel, VF, Ph | 22.50 | Scott |
| 136 | * | 78 1st prt, OG, NH, VF, Ph | 75.00 | Scott |
| 137 | * | 78 1st prt, v lt trop OG, HM, big margins, VF, Ph | 50.00 | Scott |
| 138 | * | 78 2nd prt worn/gray op (78.B), OG, sm HR, fresh, F-VF, Ph | 50.00 | Scott |
| 139 | o | 78 1st prt (78.A) w/ full guideline on SE L & B, v. lt cancel, VF, Ph | 37.50 | Scott |
| 140 | o | 78 1st prt (78.A), heavy but neat cancel, F-VF, Ph | 37.50 | Scott |
| 141 | o | 78 2nd prt (78.B), fresh, F-VF, Ph | 37.50 | Scott |
| 142 | * | 79, OG, lt HM, fresh, VF+, Ph | 35.00 | Scott |
| 143 | * | 79, OG, lt HM, fresh, VF, Ph | 35.00 | Scott |
| 144 | o | 79, lt cancel, F-VF, Ph | 22.50 | Scott |
| 145 | * B4 | 79, OG, NH, fresh, F-VF, Ph | 210.00 | Scott |
| 146 | * | 80 1st prt (red lilac, clean-cut op, 80.A), OG, HR, fresh, VF, Ph | 77.50 | Scott |
| 147 | * | 80 2nd prt (lilac, worn op, 80.B), OG, NH, fresh, F-VF+, Ph | 115.00 | Scott |
| 148 | * | 80 2nd prt, OG, NH, v lt toned, F-VF, Ph | 115.00 | Scott |
| 149 | o | 80 1st prt (9.2mm spacing, 80.A), lt cork cancel, lt cr visible rev only, o/w F-VF, Ph | 45.00 | Scott |
| 150 | o | 80 2nd prt (80.B), moderate target cancel, F-VF, Ph | 45.00 | Scott |
| 151 | * | 81, slightly hazy OG, sm HR, F-VF+, Ph | 225.00 | Scott |
| 152 | o | 81, lt cancel, F-VF, Ph | 95.00 | Scott |
| 153 | * | 85, OG lightest possible touch on gum, o/w NH, fresh, VF | 6.00 | Scott |
| 154 | * pair | 86b CANAL inverted w/ normal, SE as always, OG, HM, fresh, VF, PF cert, Ph | 950.00 | Scott |
| 155 | * | 86 ZONE wrong font, OG, HM, pre-printing paper cr barely visible LL, F, Front Ph | 250.00 | Scott |
| 156 | * | 87, TG, o/w NH, fresh, VF, Ph | 35.00 | Scott |
| 157 | * | 87, OG, large HM, F-VF+ | 35.00 | Scott |
| 158 | * | 89, v lt trop OG, fresh, NH, F+ | 42.50 | Scott |
| 159 | * | 93, OG, NH, F+ | 5.75 | Scott |
| 160 | * | 97, OG, lt HM, F-VF, Ph | 42.00 | Scott |
| 161 | * B4 | 97 block, perfect NH gum, nice centering for this difficult issue, VF, Ph | 175.00 | Scott |
| 162 | * BkPn | 101a booklet pane, OG, NH, fresh, VF, Ph | 160.00 | Scott |
| 163 | o | 104 Z under C, lt cancel, F-VF+ | 10.00 | Scott |
| 164 | * | 105 LL blk w/ siderographer initials, dry prt w/ shiny gum, OG, NH, VF, Ph | 3.00 | Est |
| 165 | * BkPn | 106a booklet pane w/ guideline B, OG, HR, F-VF+ | 15.00 | Scott |
| 166 | * BkPn | 117a booklet pane w/ guideline B, OG, HM, F-VF | 45.00 | Scott |
| 167 | * Bklt | 117a complete booklet, minor cover bends at staples, panes VF | 120.00 | Scott |
| 168 | * Bklt | 117b complete handmade booklet, 2 NH panes, one w/ nat SE at T, both F-VF, cover bent moderately at staples, F+ | 320.00 | Scott |

DEFINITIVE STAMPS (contd)

| | | | | |
|-----|---------|---|-------|-------|
| 169 | o B4 | 123 used blk, clear Balboa RI-1, F-VF | 5.00 | Scott |
| 170 | * | 127, OG, NH, lg margins, VF, Ph | 3.50 | Scott |
| 171 | * | 130, OG, NH, lg margins, VF+, Ph | 8.00 | Scott |
| 172 | * 6pair | 153-55 & 160-62 joint line pairs, 25¢ thinned, o/w F-VF, rest OG, NH & F-VF+ | 29.45 | Scott |
| 173 | * 2 | 154 joint line pair (HM, VF) plus coil roll label for 100 4¢ (wrinkled), Ph | 5.00 | Est |
| 174 | * 3pair | 160-162 coil pairs, OG, NH, VF | 7.30 | Scott |
| 175 | * pair | 162 pair, OG, NH, VF | 5.50 | Scott |
| 176 | * BkPn | 163 a w/ full offset of design on rev, pre-printing paper wrinkle, o/w F-VF | 10.00 | Est |
| 177 | * 3 Bkl | 163a 3 complete unstapled booklets w/ the three types of tabs, sm corner bump on 3 panes w/ the sm blue bar on tabs, o/w VF | 45.00 | Scott |

AIR POST STAMPS

| | | | | |
|-----|---------|--|--------|-------|
| 178 | * | C1, OG, HM, fresh, F-VF | 8.00 | Scott |
| 179 | * | C2, pretty OG, NH, F-VF, Ph | 120.00 | Scott |
| 180 | o | C2, F-VF, Ph | 52.50 | Scott |
| 181 | o | C2, F+, Ph | 52.50 | Scott |
| 182 | * | C4, fresh OG, v LH, VF+, Ph | 8.00 | Scott |
| 183 | * 9 | C6-C14, OG, HR, F-VF | 22.35 | Scott |
| 184 | o | C5a dropped 2 (pos 6), SE at T, lt cancel, F+, Ph | 60.00 | Scott |
| 185 | * 3B4 | C15-C17 blocks, OG, NH (sm gum skips on 10¢), every stamp well centered, VF | 47.00 | Scott |
| 186 | * 33 | C21-C53, OG, NH, nearly all VF | 59.00 | Scott |
| 187 | * sheet | C45 LR pane of pl #168775/168781, pn # in selvedge of pl # blk, OG, NH, F-VF | 27.50 | Scott |
| 188 | * sheet | C46 UR pane of pl #168775/168784, OG, NH, VF | 40.00 | Scott |
| 189 | * sheet | C47 UL pane of pl #168773/168789, OG, NH, VF | 100.00 | Scott |
| 190 | * sheet | C48 LR pane of pl #168775/170214, OG, NH, VF | 12.50 | Scott |
| 191 | * sheet | C49 LR pane of pl #168775/171626, OG, NH, VF | 12.50 | Scott |
| 192 | * Bklt | C49a complete booklet w/ long black bars on tabs, F-VF | 17.50 | Scott |
| 193 | * 3Bklt | C49a 3 complete booklets w/ each of the tab markings (no plain tab), F-VF | 52.50 | Scott |
| 194 | * BkPn | C49a booklet pane w/ lg black bar on tab, OG, NH, F-VF | 6.00 | Est |
| 195 | * 2Bklt | C50a 2 complete booklets: plain tab & lg black tab, VF | 60.00 | Scott |
| 196 | * sheet | C51 (flat gum) UR pane of pl #168773/173008, OG, NH, VF | 37.50 | Scott |
| 197 | * sheet | C52 UL pane of pl #168775/170203, OG, NH, F-VF | 30.00 | Scott |
| 198 | * sheet | C53 (flat gum) LL pane of pl #168773/173010, OG, NH, VF | 45.00 | Scott |

POSTAGE DUE STAMPS

| | | | | |
|-----|------|---|----------|-------|
| 199 | o | Like Bliss Provisional PrPD-2 but on #10, lg even margins, like Type B in CZSG Stamps Checklist, (see page 110 of Entwistle's Postal Markings), VF, Ph | 30.00 | Est |
| 200 | * | J1, slightly tropicalized gum, NH, fresh, VF, Ph | 85.00 | Scott |
| 201 | o B4 | J1 used block w/ 3mm horiz spacing, F+, Ph | 80.00 | Scott |
| 202 | o | J1, F-VF | 15.00 | Scott |
| 203 | * | J1, OG, HR, F-VF, Ph | 85.00 | Scott |
| 204 | o | J2 w/ siderographer initials D.H. S. in selvedge, VF+, Ph | 42.50 | Scott |
| 205 | * | J3, OG, HR, strong perfs, sm balanced margins T & B, fresh, F-VF, Front Ph | 1,000.00 | Scott |
| 206 | o | J3, F-VF | 40.00 | Scott |
| 207 | * | J2, TG but no indication of hinging, fresh, strong perfs, F-VF, Ph | 250.00 | Scott |
| 208 | * | J5, OG, HM, fresh, VF+, Ph | 225.00 | Scott |
| 209 | * | J5, extremely lightly trop OG, NH, F+, Ph | 225.00 | Scott |
| 210 | * | J10, NG, nice centering, a few toned areas rev, o/w VF | 30.00 | Scott |
| 211 | * | J11, TG, no indication of hinging, F | 35.00 | Scott |
| 212 | * | J12, OG, HR, F-VF, Ph | 100.00 | Scott |
| 213 | * | J12, NG, fresh, F+, Ph | 100.00 | Scott |
| 214 | o | J13, F-VF+ | 10.00 | Scott |
| 215 | * | J13, OG, HR, VF, Ph | 55.00 | Scott |
| 216 | * | J14, OG, HR, F+, Front Ph | 225.00 | Scott |
| 217 | o | J14, fresh, F-VF, Ph | 50.00 | Scott |
| 218 | * | J15, lt dist gum, HM, F-VF, Ph | 90.00 | Scott |
| 219 | o 3 | J15-J17, all w/ lt cancels, 2¢ F, 1¢ F+, 10¢ F-VF | 31.00 | Scott |
| 220 | o 3 | J15-J17, moderate cancels, very well centered, strong perfs, VF | 31.00 | Scott |
| 221 | * | J16, OG, lg gum skip, NH, fresh, F-VF | 22.50 | Scott |

POSTAGE DUE STAMPS (contd)

| | | | | |
|-----|--------|--|--------|-------|
| 222 | o | J16 (2 singles) w/ plate finishers' initials R: 1) JAC JWG, 2) J McF JMB, F-VF, Ph | 15.00 | Est |
| 223 | * | J16 w/ raised op - POSTAGE above CANAL, DG, HM, F-VF, Ph | 22.50 | Scott |
| 224 | * | J17, lt TG, HM, fresh, VF, Ph | 50.00 | Scott |
| 225 | * | J17a POSTAGE DUE double, OG lt dist from interleaving, red STOLOW hs guarantee & red ink on gum but no bleedthrough, centered to B as usual, F+, Ph | 800.00 | Scott |
| 226 | * pair | J17b E omitted in pair w/ normal, glazed TG but apparently NH, perms cut L and touch B, strong perms, fresh, Ph | 750.00 | Scott |
| 227 | * | J17b E omitted, TG, two sm thins, centered F+ for this, nice appearance, Ph | 750.00 | Scott |
| 228 | * | J18 clean-cut op 9mm spacing, OG, NH, F+ | 8.00 | Scott |
| 229 | * 2 | J18 both prt: 1) 9mm spacing, OG, NH, F-VF+, 2) 11mm spacing, OG, HR, VF | 16.00 | Scott |
| 230 | o 3 | J18-J19: 1) 1¢ worn op 11mm spacing, F-VF, 2) 2¢ both spacings (J19.A & .B), each F-VF+ | 11.00 | Scott |
| 231 | o 3 | J18-J20 all 2nd prt,lg margins & well centered, 1¢ & 2¢ lt cancels, 10¢ cancelled w/ lg Z, each VF, Ph | 27.00 | Scott |
| 232 | * | J19 clean-cut op (J19.A), OG, HM, VF, Ph | 15.00 | Scott |
| 233 | * | J19 worn op (J19.B), OG, HM, VF, Ph | 15.00 | Scott |
| 234 | * | J20 clean-cut op (J20.A), slightly dried gum, HM, fresh, VF, Ph | 150.00 | Scott |
| 235 | * | J20 worn op (20.B), fresh OG, HM, centered to R, F, Ph | 150.00 | Scott |
| 236 | o | J20 clean-cut op (J20.A), VF, Ph | 20.00 | Scott |
| 237 | o | J20 worn op (J20.B), VF+, Ph | 20.00 | Scott |
| 238 | * | J20 clean-cut op, OG, NH, VF+, PF cert, Front Ph | 150.00 | Scott |
| 239 | * | J23 w/ 1.5mm gap in flag of '5', dried up TG, F, Ph | 10.00 | Est |

PLATE NUMBER BLOCKS & SINGLES

Also see lots 8, 10, 11, 14 & 109

| | | | | |
|-----|---------|--|--------|-------|
| 240 | o B12 | 70 2nd prt used pl # 17080 R block of 12 (4 across by 3 down), moderate cancels, well centered, F-VF | 15.00 | Est |
| 241 | * B6 | 71 2nd prt pl #16556 R, OG, NH, fresh, F-VF | 30.00 | Scott |
| 242 | * B6 | 91 (1st prt 9mm spacing) pl #18022 T, OG, HM in selvedge only, staple hole & bends in selvedge, F, Ph | 190.00 | Scott |
| 243 | * | 93 single 1st prt w/ pl #14436 R, DG, HM, F-VF | 5.75 | Scott |
| 244 | * B6 | 111a wet prt pl #123710 T, OG, NH, F-VF | 12.50 | Scott |
| 245 | * sheet | 117 dull gum UR pane of 100 w/ pl #F129223, w/ part of guide box & punched hole over pos 1, OG, NH, F-VF | 25.00 | Scott |
| 246 | * B4 | 118 pl #21885 LL, OG, NH, F-VF | 2.75 | Scott |
| 247 | * | 118 pl #21888 LL, OG, HM, VF | 2.75 | Scott |
| 248 | * 3B4 | 119 #22645 UL, #22646 UL & #22646 LL, OG, NH, F-VF+ | 6.75 | Scott |
| 249 | * 2B4 | 119 #22645 UL & #22646 UL, OG, NH, F-VF | 4.50 | Scott |
| 250 | * B6 | 120 pl #141006 T, OG, hinge on selvedge, usual gum creases, F-VF | 12.50 | Scott |
| 251 | * B6 | 120 pl #141006 B, gum skips & minor gum creases, F-VF+, Ph | 12.50 | Scott |
| 252 | * B6 | 121 pl #141181 B, NH, minor gum skips in B selvedge, F-VF | 12.50 | Scott |
| 253 | * B6 | 122 pl #141501 B, OG, NH, usual gum creases, F-VF | 12.50 | Scott |
| 254 | * B6 | 123 pl #141096 B, OG, NH, usual gum creases, F-VF+, Ph | 20.00 | Scott |
| 255 | * B6 | 125 pl #141008 B, OG, NH, usual gum creases & minor gum skips, F-VF, Ph | 45.00 | Scott |
| 256 | * B6 | 141 pl #159908 B, OG, NH, usual gum crs, gum skips B of selvedge, F-VF | 8.50 | Scott |
| 257 | * 4B6 | 142-145 four pl # blocks each w/ full B selvedge, usual gum creases, 3¢ lt HM, 6¢ NH, 12¢ NH, 18¢ HMs, each F-VF | 50.00 | Scott |
| 258 | * 4B4 | 163 matched set of #172912, OG, NH, VF | 8.00 | Scott |
| 259 | * 4B4 | 165 matched set of #173356, OG, NH, VF | 8.00 | Scott |
| 260 | * 4B4 | 165 matched set of #173357, OG, NH, VF | 8.00 | Scott |
| 261 | * 3 | C3 three pl #115187 singles: L (NH), R (HM) & B (HR), each F-VF | 12.25 | Scott |
| 262 | * 2 | C4 pl #118121 singles: 1) T, NH, sm toned rev, 2) L, HR w/ DG, fresh, F-VF | 16.00 | Scott |
| 263 | * | C5 single w/ Pl #F115187, OG, NH, fresh, bend on selvedge, o/w VF+ | 7.50 | Scott |
| 264 | * 6 | C6-C9, C11 & C13 top pl # singles (narrow selvedge), 5¢, 10¢ & 40¢ NH & F-VF, others w/ sm faults | 8.60 | Scott |
| 265 | * B6 | C7 pl #123574 B, a bit floppy but fresh, OG, HM, even 1/8" band of shiny gum on front of selvedge edge, F+ | 4.50 | Scott |
| 266 | * 7 | C7-C12 & C14 B pl # singles, 5¢, 20¢ & \$1 NH, 30¢ thinned, rest HR, F+ | 18.10 | Scott |
| 267 | * B6 | C9 red orange pl #123575 B, OG, NH, wide gum skip across B 3 stamps, F-VF | 10.00 | Scott |

PLATE NUMBER BLOCKS & SINGLES (contd)

| | | | | | |
|-----|---|------|--|--------|-------|
| 268 | * | B6 | C10 blue pl #123576 B, OG, NH, usual gum crs & gum skip along selvedge, F-VF | 11.00 | Scott |
| 269 | * | B6 | C11 red violet pl #123577 B, OG, NH, usual gum creases, F-VF | 20.00 | Scott |
| 270 | * | B6 | C11 red violet pl #123577 B, OG, HM on one stamp, minor gum creases, F-VF | 20.00 | Scott |
| 271 | * | B6 | C13 pl #123578 B, OG, NH, some gum skips, heavy gum creases visible on selvedge, well centered | 32.50 | Scott |
| 272 | * | 2B6 | C21a wet prt pl #162159 L & C22a wet prt pl #162151 R, OG, NH, lg gum skips in selvedge of both, F+ | 17.50 | Scott |
| 273 | * | B6 | C22a wet prt pl #162151 L, OG, NH, F-VF | 7.50 | Scott |
| 274 | * | 2B6 | C23 dry prt: 1) #162153 L, HM, 2) #162154 L, NH, 2 diff shades, F-VF | 16.00 | Scott |
| 275 | * | B6 | C24a wet prt pl #162160 L, OG, NH, 12mm (!) vert band of gum on selvedge, fresh, sliver of ink on very edge of selvedge, F-VF, Ph | 125.00 | Scott |
| 276 | * | B6 | C26a wet prt pl # 162162 L, lt dist gum & lg gum skip along R, tiny cr in LR selvedge, well centered, Ph | 100.00 | Scott |
| 277 | * | 6B4 | C36-C41pl # blks, all UR exc 20¢ & 30¢ LR, HR, o/w VF | 53.75 | Scott |
| 278 | * | 4B4 | C41 all four pos of pl # blocks, UR & LL are NH, other HM, F-VF+ | 80.00 | Scott |
| 279 | * | 4B4 | C50 matched set of #172228/168773, OG, NH, sm indentation on one, F-VF | 19.00 | Scott |
| 280 | * | 4B4 | C50 matched set of #168773/172229, bend on one, OG, NH, F-VF | 19.00 | Scott |
| 281 | * | 13B4 | 13 diff pl #blks: 108 L, 112 L, 117 T, 138 T, 163 UL, 165 LR, C45 UL, C46 UR, C47 LL, C50 UR, C51 UL, C52 UL, C53 UR, all NH, VF | 25.00 | Est |

LARGE STAMP LOTS

| | | | | | |
|-----|---|-----|--|--------|-----|
| 282 | o | 50B | 50 used blks - 25 diff, mixed condition, incl 34, 40, 51, CO7, F+ group, Ph | 40.00 | Est |
| 283 | o | 31 | 31 diff CZ postage meters on stickers or cut corners, 4 from 50's & 60's, rest from 70's, numbers 2, 3(2), 13, 20, 21, 25, 26(Bal), 26(HowAFB), 28, 31, 32(2), 40, 41, 43, 51, 54, 57, 58, 60, 65, 70, 71, 72, 81, 83, 85, 87, 89, clean & F-VF group, Ph | 50.00 | Est |
| 284 | * | 40 | 40 mostly diff mint & used bet 4 & 62 w/ 6 shades of #24, condition varies, mostly Ave or F, Cat value about \$390 | 125.00 | Est |

PERFIN STAMPS

| | | | | | |
|-----|---|---|--|-------|-----|
| 285 | o | | C7 perfin reading down & rev, perfin clear of cancel, perfs cut T frame, sound, F | 20.00 | Est |
| 286 | o | | C9 perfin reading down, minor blunting of T perfs, o/w VF, Ph | 20.00 | Est |
| 287 | o | | C10 perfin reading up, SE at R, one sp B, o/w F+ | 15.00 | Est |
| 288 | o | | C12 perfin reading across, SE, perfin clear of cancel, bend, sm perf fault, o/w F-VF | 15.00 | Est |
| 289 | o | | C13 perfin reading down, SE right, perfin clear of cancel, VF, Ph | 25.00 | Est |
| 290 | o | | C22 perfin reading up, centered R, sound, F | 15.00 | Est |
| 291 | o | 2 | 117 two: 1) perfin reading up, SE at R, 2) perfin reading upside down, SE at B, both creased & perf faults but nice appearance | 15.00 | Est |
| 292 | o | | 122 perfin reading up, minor perf creases, o/w F-VF, Ph | 20.00 | Est |
| 293 | o | | 123 perfin reading down, cancel a bit heavy & lt toning rev, F-VF, Ph | 25.00 | Est |
| 294 | o | | 131 perfin reading up, nice appearance, sm cr UL, o/w F-VF+, Ph | 25.00 | Est |
| 295 | o | | 141perfin reading up & reversed, wr, toning rev, centered to B, nice appearance | 15.00 | Est |

OFFICIAL PERFORATED 'P' STAMPS

| | | | | | |
|-----|---|---|--|-------|-----|
| 296 | o | | 38 "P" lying on its back, lt cancel, VF, Ph | 15.00 | Est |
| 297 | o | | 38 "b" on its back, lt cancel, well centered, UL corner crs & sp, o/w VF | 10.00 | Est |
| 298 | o | | 38 "P" on its back (9.2mm spacing), lt cancel, lt rubs on a few perfs, pn rev, F | 12.00 | Est |
| 299 | * | | 39 "P" lying on its back, tissue on rev & HR, minor UR corner cr, o/w F+ | 12.00 | Est |
| 300 | o | | 52 "b" on its back, v lt cancel, centered to T, F+, Ph | 20.00 | Est |
| 301 | o | | 55 "q", Bal Hts CDS, clean, F-VF, Ph | 25.00 | Est |
| 302 | o | | 55 "q", cancel a bit heavy, sound, centered F | 15.00 | Est |
| 303 | o | | 60 "P" lying on its back, excellent centering, cancel a bit heavy, VF, Ph | 18.00 | Est |
| 304 | o | 2 | 105 "P", nice appearance, cr, o/w F+, AND 106 "q", tear UL, lt cancel | 10.00 | Est |
| 305 | o | | 108 "P" lying on its front, centered to R, F+ | 10.00 | Est |
| 306 | o | | 108 "b" lying on its front, corner bend, one sp, o/w F-VF | 10.00 | Est |
| 307 | o | | C7 "P", minor corner perf crease LR, fresh, lt cancel, F-VF | 8.00 | Est |
| 308 | o | | C13 "P" on its back, a few slightly blunt perfs, F-VF, Ph | 15.00 | Est |
| 309 | o | | C15 "P" on its front, lg thin, lt cancel, F+ appearance, Ph | 12.00 | Est |
| 310 | o | | C17 "b" on its front, F-VF+, Ph | 12.00 | Est |
| 311 | o | | C17 "P" on its back, corner cr & wrinkled perf, lg margins & nice appearance | 8.00 | Est |

OFFICIAL AIR POST STAMPS

Cancelled-to-Order items are indicated by CTO in the description and by 'x' in the field next to the lot number.

| | | | | |
|-----|-----|---|--------|-------|
| 312 | * | CO1 with vertically 'ribbed' gum, slightly trop OG & mild gum skips, NH, F+ | 7.50 | Est |
| 313 | o 3 | CO1-CO3 w/ O/N postally used, fresh, sound, neat cancels, F+ centering, Ph | 20.00 | Est |
| 314 | x 7 | CO1-CO7 CTO w/ O/N, 5¢ & \$1 NH, rest HMs, F+ set, Ph | 50.00 | Est |
| 315 | o 7 | CO1-CO7 CTO w/ O/N; 5¢, 15¢ & 40¢ NG; rest w/ HM, well centered, F-VF, Ph | 32.00 | Scott |
| 316 | * 8 | CO1-CO7& CO14, OG, NH, F-VF, Ph | 105.00 | Scott |
| 317 | * 8 | CO1-CO7 & CO14, OG, HM, F-VF+, Ph | 105.00 | Scott |
| 318 | x | CO2 CTO w/ O/N, OG, HM, VF | 8.00 | Est |
| 319 | x | CO2 CTO w/ O/N, OG, HM, F-VF | 5.00 | Scott |
| 320 | x | CO3 CTO w/ O/N, OG, NH, F-VF | 8.00 | Est |
| 321 | x | CO3 CTO w/ O/N, OG, HM, F-VF+ | 8.00 | Est |
| 322 | x | CO5 CTO w/ O/N, OG, NH, lg margins, VF, Ph | 12.00 | Est |
| 323 | x | CO5 CTO w/O/N, OG, HM, F-VF | 8.00 | Est |
| 324 | x | CO5 w O/A, CTO, DG, HR, F+ | 10.00 | Est |
| 325 | o 3 | CO5-CO7 w/ O/N postally used, 30¢ SE at R, each w/ creasing, centered F+ & nice appearance, Ph | 20.00 | Est |
| 326 | o | CO6 postally used w/ C of CANAL broken T, F-VF, Ph | 10.00 | Est |
| 327 | o | CO6 w/ broken 'O' at T, SE, postally used, perfs just touch B, F | 10.00 | Est |
| 328 | o | CO7 postally used w/ missing vert stroke on N of PANAMA, centered R, F, Ph | 10.00 | Est |
| 329 | x | CO7 CTO w/ O/N, OG, NH, F-VF+ | 10.00 | Est |
| 330 | x | CO9 CTO, NG, VF, Ph | 275.00 | Scott |
| 331 | x | CO9 lt CTO cancel, NG, F+, Ph | 275.00 | Scott |
| 332 | x | CO10 CTO, OG, NH, minor gum skips, pn sign on gum, VF, Ph | 175.00 | Scott |
| 333 | x | CO10 CTO, NG, F-VF, Ph | 175.00 | Scott |
| 334 | o | CO11 postally used, strong perfs and even margins, F-VF, Ph | 65.00 | Scott |
| 335 | o | CO11 postally used, neat cancel, F-VF, Ph | 65.00 | Scott |
| 336 | x | CO14 CTO w/ L of OFFICIAL over A1, OG, HM, F, Ph | 20.00 | Est |

OFFICIAL ORDINARY STAMPS

| | | | | |
|-----|-----|--|--------|-------|
| 337 | * 7 | O1-O2, O4-O7 & O9, OG, some heavy HMs, each F+ or better | 77.25 | Scott |
| 338 | * | O2 w/ L/A (not listed), OG, NH, F-VF, Front Ph | 50.00 | Est |
| 339 | x | O3 CTO, OG, HM, VF | 32.50 | Scott |
| 340 | x | O3 CTO, NG, VF | 32.50 | Scott |
| 341 | x | O8, pistine OG, NH, F, Ph | 650.00 | Scott |
| 342 | * | O9, OG, NH, VF, Ph | 13.50 | Scott |

POST OFFICE SEALS

| | | | | |
|-----|---------|---|--------|-------|
| 343 | * sheet | OX3 sheet of 25, purple shade, pos 22 shows large dot under H of THE, minor sep & edge wear, F-VF | 100.00 | Scott |
| 344 | * sheet | OX4 sheet of 20, large wing margins T & L, toned spots affect several, F | 180.00 | Scott |

PROOFS & SPECIMENS

A checklist of CZ Specimens appears in issue #117 (Fourth Quarter, 1995) of *The Canal Zone Philatelist*.

| | | | | |
|-----|-------|---|--------|-----|
| 345 | * | O1.P1 proof of the small-size Official op, off-white, F-VF | 10.00 | Est |
| 346 | * | 31 w/ 14mm red Specimen (only 98), OG, NH, perfs just cut T | 25.00 | Est |
| 347 | * 4 | 31-34 Specimens, 1¢ & 8¢ 20mm, rest 14mm, OG, NH, 1¢ perfs cut T, others F+ | 40.00 | Est |
| 348 | * | 32 Specimen (early prt), OG, NH, F-VF+ | 15.00 | Est |
| 349 | * B4 | 32 Specimen block (early prt), OG, NH, F-VF+, Ph | 60.00 | Est |
| 350 | * | 33 Specimen (late prt), OG, NH, F | 15.00 | Est |
| 351 | * B4 | 33 Specimen block (late prt), OG, NH, perfs touch inscript, F+ | 80.00 | Est |
| 352 | * | 34 Specimen, OG, NH, perfs into B inscript, F | 20.00 | Est |
| 353 | * | 36 Specimen, OG, NH, F+ | 20.00 | Est |
| 354 | * | 36 Specimen, OG NH, F+ | 20.00 | Est |
| 355 | * | 37 Specimen, OG, NH, F | 20.00 | Est |
| 356 | * | 37 Specimen, OG, NH, F | 20.00 | Est |
| 357 | * | 38 Specimen (13.8mm), OG, NH, VF, Ph | 25.00 | Est |
| 358 | * 4B4 | 38-41 four well-centered blks, Specimen types respectively 13.8mm red, 13.8mm blue, 20mm red early, 14.1mm red, OG, NH, Ph | 300.00 | Est |
| 359 | * | 39 20mm blue Specimen (early prt), OG, NH, F+ | 15.00 | Est |

PROOFS & SPECIMENS (contd)

| | | | | |
|-----|-----|--|--------|-----|
| 360 | * | 39 20mm red Specimen, OG, NH, F-VF | 15.00 | Est |
| 361 | * | 39 14.2mm blue Specimen, OG, NH, F+ | 15.00 | Est |
| 362 | * | 39 14.2mm red Specimen, OG, NH, F | 15.00 | Est |
| 363 | * | 40 14.2mm red Specimen, OG, NH, F-VF | 15.00 | Est |
| 364 | * | 40 20mm red Specimen (early prt), OG, NH, perf close T & R, F | 15.00 | Est |
| 365 | * | 41 Specimen, OG, NH, one blunt perf T, o/w F-VF | 15.00 | Est |
| 366 | * | 49 Specimen, OG, NH, F+ | 15.00 | Est |
| 367 | * 3 | 49-51 Specimens, OG, NH, F+ centering on 12¢ & 15¢, VF+ centering on 24¢, Ph | 75.00 | Est |
| 368 | * | 52 13.8mm Specimen, OG, NH, F+ | 15.00 | Est |
| 369 | * | 52 14.2mm Specimen, OG, NH, F+ | 15.00 | Est |
| 370 | * 3 | 52-54 Specimens, 13.8 mm, 14.2mm & 13.8mm, 5¢ perfs close, OG, NH, F+ | 60.00 | Est |
| 371 | * | 55 Specimen, OG, NH, F | 15.00 | Est |
| 372 | * 3 | 55-57 Specimens, 11.2mm on 2¢, OG, NH, F+, Ph | 75.00 | Est |
| 373 | * | 56 13.7mm Specimen, OG, NH, F+ | 15.00 | Est |
| 374 | * | 58 Specimen, OG, NH, F-VF, Ph | 50.00 | Est |
| 375 | * | 58 Specimen, OG, NH, F+, Ph | 40.00 | Est |
| 376 | * 2 | 58 (XF) & 59 (perfs touch R) Specimens, OG, NH, Ph | 125.00 | Est |
| 377 | * | 59 Specimen, OG, NH, several blunt perfs L, o/w F+, Ph | 30.00 | Est |
| 378 | * | 59 Specimen, OG, NH, F, Ph | 30.00 | Est |
| 379 | * 2 | 60-61 Specimen, OG, NH, F-VF+ | 30.00 | Est |
| 380 | * 7 | 60-66 Specimens, OG, NH, 10¢ perfs touch B, 50¢ perfs close T, o/w F-VF, Ph | 150.00 | Est |
| 381 | * | 63 Specimen, OG, NH, perfs cut B frame | 15.00 | Est |
| 382 | * | 64 Specimen, OG, NH, F-VF+, Ph | 25.00 | Est |
| 383 | * | 65 Specimen, OG, NH, F+ | 20.00 | Est |
| 384 | * 7 | Unissued Coat-of-Arms set Specimens, OG, NH, centering: 5¢ & 10¢ F, 50¢ & \$1 VF, rest F-VF, Ph | 300.00 | Est |
| 385 | * 3 | J4-J6 Specimens, 1st two 19.8mm & VF, 10¢ 13.7mm & F, OG, NH, Ph | 125.00 | Est |
| 386 | * 2 | J8-J9 Specimens, 14.2 mm & 14.3 mm respectively, OG, NH, F+ | 40.00 | Est |
| 387 | * | Unissued 4¢ Type II Specimen (J8A.S in checklist), OG, NH, lg margins, VF+, Ph | 25.00 | Est |
| 388 | * | J11C Type V op Specimen, OG, NH, F-VF, Ph | 30.00 | Est |
| 389 | * | J11C Type V op Specimen, OG, NH, diagonal cr, centered VF | 15.00 | Est |

PRECANCELS

| | | | | |
|--|---------|---|-------|-----|
| 390 | o | Type I: 93 inverted precancel, perfs touch at B, sound & fresh, Ph | 15.00 | Est |
| 391 | o 2 | Type I: 93(2): 1) precancel reading up, perfs close, 2) precancel reading down, perfs cut R, sound, F | 20.00 | Est |
| 392 | o B4 | Type I: 93 blk, SE at T, ironed-out creases on all, F+ centering, Ph | 35.00 | Est |
| 393 | o 8 | Type I: 105(dam), 106, 107(SE), 108(SE, SRC Jul 38), 109(perfs cut, SRC Jul 38), 111, 112, 113, F+ group | 16.00 | Est |
| 394 | o 9 | Type I: 105-109 & 111-114, 30¢ scraped, a couple of blunt perfs, o/w F-VF+ group | 25.00 | Est |
| 395 | o | Type I: 108 inverted precancel, perfs cut T & R, sound & clean, Ph | 10.00 | Est |
| 396 | o 4 | Type I: 108, 109, 111 & 112, minor faults, F group | 8.00 | Est |
| 397 | o 3 | Type I: 117-119, each F+ | 5.00 | Est |
| 398 | o 4 | Type I: 120 (wrs, perfs close L), 121 (bleached spot), 127 (VF+), 131(F+), Ph | 15.00 | Est |
| 399 | o | Type I: 133, minor wrinkling, well centered, F-VF | 10.00 | Est |
| 400 | o | Type II: 120, lt corner cr UR, strong perfs & fresh, F+ | 5.00 | Est |
| 401 | o 5 | Type III-Orig Plate: 108, 109, 112-114, a few blunt perfs, F+ group | 7.00 | Est |
| 402 | o 6 | Type III-1st Replace Plate: 105, 106, 109(SE), 117, 118 & 139, F+ | 6.00 | Est |
| 403 | o | Type III-2 - 1st Replace Plate: 140 tiny scuff & lt toned spots, perfs close T | 10.00 | Est |
| 404 | o | Precancel proof on thin white paper, P.PC III-2b, horiz bend, o/w VF | 10.00 | Est |
| 405 | 9 | Type IIIb - 2nd eplace Plate: 105, 108, 111- 113, 117, 138 & 139, OG, NH, F-VF plus 139 w/ SRC Oct 69, NG, VF | 6.00 | Est |
| 406 | o | Type III-3 - 2nd Repl Pl: 110, SE at R, perfs cut T, tiny lt scuff, nice appearance | 8.00 | Est |
| 407 | o B6 | Type III-3 - 2nd Repl Pl: blk 6 w/ SRC type IV Jan 62, tr LL stamp, o/w F-VF | 10.00 | Est |
| The next seven lots are full panes of the THIRD replacement plate. See the article in CZP issue 143, p 34. | | | | |
| 408 | * sheet | Type III-4 - Third Replace Plate: 105 full pane of 100 (UL, pl #121473, shiny gum) showing even printer's rules & shift on pos 77, VF | 25.00 | Est |

PRECANCELS (contd)

| | | | | | |
|-----|---|-------|---|--------|-----|
| 409 | * | sheet | Type III-4 - Third Replace Plate: 108 full pane of 100 (UR, pl #123709, shiny gum) showing even printer's rules & shift on pos 77, VF | 25.00 | Est |
| 410 | * | sheet | Type III-4 - Third Replace Plate: 111 full pane of 100 (LR, pl #123710, shiny gum) showing even printer's rules & shift on pos 77, VF | 25.00 | Est |
| 411 | * | sheet | Type III-4 - Third Replace Plate: 112 full pane of 100 (UL, pl #165887, shiny gum) showing even printer's rules & shift on pos 77, VF | 25.00 | Est |
| 412 | * | sheet | Type III-4 - Third Replace Plate: 113 full pane of 100 (LL, pl #141629, shiny gum, drilled hole to L of pos 1) showing even printer's rules & shift on pos 77, VF | 25.00 | Est |
| 413 | * | sheet | Type III-4 - Third Replace Plate: 138 full pane of 100 (UR, pl #160822, dull gum) showing even printer's rules & shift on pos 77, VF | 25.00 | Est |
| 414 | * | sheet | Type III-4 - Third Replace Plate: 139 full pane of 100 (LR, pl #158038, shiny gum) showing even printer's rules & shift on pos 77, VF | 25.00 | Est |
| 415 | * | 7 sht | The preceding seven lots combined, being a complete run in full sheets of all the issues reported w/ the Third Replacement Plate | 175.00 | Est |
| 416 | o | | Type IV: 107 SE at L, SRC Nov 45, fresh, lt diag 'crease' (pre-printing?) not visible from front, sm corner cr LR, o/w F-VF, Ph | 35.00 | Est |
| 417 | o | | Type IV: 107, SRC Oct 47, ironed-out wrinkles, perms close R, F+, Ph | 25.00 | Est |
| 418 | o | | Type IV-2nd Plate: 141, NH, F-VF+, Ph | 10.00 | Est |

REVENUES

Used Panama liquor revenues for the Zone were removed from bottles. At least some minor wrinkling occurs on all used copies. Grading in this section has been adjusted accordingly.

| | | | | | |
|-----|---|--|---|-------|-----|
| 419 | o | | R9 carmine, v. minor wrinkling, all perms intact, VF, Ph | 12.00 | Est |
| 420 | o | | R9 carmine Litros, some wrinkling, F | 8.00 | Est |
| 421 | o | | R10 black Litros, moderate wrinkling, F-VF | 12.00 | Est |
| 422 | | | R13 rose red, minor wrinkling, VF, Front Ph | 18.00 | Est |

POSTAL STATIONERY ENVELOPES

| | | | | | |
|-----|------|--|---|--------|-------|
| 423 | o | | U2(UPSS 2), Bal Hts 3/15/27, very late use - allowed because ot bears printed corner card, a bit wrinkled, F | 25.00 | Scott |
| 424 | o | | U2 (UPSS 2) clear Ft Amador Hs-11 4/16/18 (early period), vert fold middle, sm nip off back flap, o/w F, UPSS \$25 | 25.00 | Scott |
| 425 | o | | U2 (UPSS 2), clear Paraiso Hs-11 6/5/17, lt overall toning & sm edge crs, F+ | 25.00 | Scott |
| 426 | o | | U2a (UPSS 2a), Cris Paquebot P-1 10/10/18, interesting magenta Navy censor box, a little doggy, F | 45.00 | Scott |
| 427 | * | | U2 carmine (UPSS 2) on miscut envelope, indicia .75" from edges, sm black mark center L, lt wrinkles, toned edges, mounting stains on rev, Ph | 200.00 | Est |
| 428 | o | | U4 (UPSS 4) Cris mc 2/16/23, lt cancel, lt wrinkling, F+, UPSS \$100, Ph | 125.00 | Scott |
| 429 | o | | U4 (UPSS 4), Balboa 11/18/22, Knights of Pythias cc, mild edge creases, F+, UPSS \$100, Ph | 125.00 | Scott |
| 430 | o | | U5 w/ falling feather (UPSS 5a), lt "The Panama Canal" Hs-11 1/5/23, lt overall toning & mild bend T of indica, still a nice used example of the variety, F+, Ph | 250.00 | UPSS |
| 431 | * | | U7, sm corner cr UR, o/w F-VF, UPSS \$50 | 30.00 | Scott |
| 432 | * | | U7 (UPSS 7a) open C, lt pn mark UL, minor bend, F-VF, Ph | 150.00 | UPSS |
| 433 | * | | U7 w/ open C (UPSS 7a), F-VF, Ph | 150.00 | UPSS |
| 434 | o | | U9, bold Ft Davis Hs-11 5/22/30, vert cr L, corner cr LR, minor bump R edge near indicia, F+, UPSS \$20 | 15.00 | Scott |
| 435 | * | | U9 w/ Cris cc (UPSS 11), very minor even toning, o/w clean & VF, Ph | 60.00 | UPSS |
| 436 | * | | U9 (UPSS 10) w/ gen request corner, VF+, Scott \$27.50 w/o cc, Ph | 50.00 | UPSS |
| 437 | * 2 | | U10-U11 official business, long penalty env, VF | 24.00 | UPSS |
| 438 | o | | U11 (UPSS 25) legal-size w/ 105(2), Bal 1/27/43, minor edge toning & bumps, F-VF, Ph | 50.00 | UPSS |
| 439 | * 2 | | U11 regular & penalty (UPSS 29 & 29p), each VF+ | 16.50 | UPSS |
| 440 | * 2 | | U17(2) (UPSS 59 & 60), VF, Scott \$2.50 | 100.00 | UPSS |
| 441 | o 2 | | U17 twice: 1) UPSS 55 w/ 138, Marg. mc 7/8/69, 2) UPSS 56 w/ 105, Curundu Hs 3/17/69, both commercial use, clean, F-VF | 7.00 | Est |
| 442 | 8 10 | | U18 (5 diff) & U19 (5 diff), UPSS #61, 63, 65-69, 71, 75 & 77, 2 legal-size w/ edge crs, rest F-VF+ | 117.50 | UPSS |
| 443 | o 3 | | 3 legal size postally used: UC10 toning & edge tears, UC12 w/ C48 & 105 minor edge creases, UC14 w/ 30¢ in stamps for insurance, F+ lot, Ph | 20.00 | UPSS |

POSTAL STATIONERY ENVELOPES (contd)

| | | | | |
|-----|-----|---|----------|-------|
| 444 | * | UF1a large size w/ 9.2mm spacing (UPSS R4), usual natural paper creases on rev from manufacture, clean, VF, UPSS \$1,750, Ph | 1,300.00 | Scott |
| 445 | o | Rejected CZ registration envelope, two 1¢ green Panama stamps, pin hole LL, minor edge wear, F-VF, Ph | 150.00 | Est |
| 446 | o 2 | UC10 & UC12 (legal size) commercially used solo, 10¢ folded L, 11¢ two sm edge tears TL, still about F+ for these | 12.00 | Scott |

POSTAL STATIONERY CARDS

| | | | | |
|-----|------|---|----------|-------|
| 447 | * | UX1(S1), fresh & clean, VF+, UPSS \$50 | 40.00 | Scott |
| 448 | * | UX1(S1), sm inclusion TL, clean, VF, UPSS \$50 | 40.00 | Scott |
| 449 | o | UX1 clear Paraiso Hs-11 11/30/08, UL corner lt wrinkles, a few edge bumps, F, UPSS \$35, Ph | 25.00 | Scott |
| 450 | o | UX1 Gorgona Hs-11 4/19/07 w/ nice Tabernilla RC-4 on face, minor edge toning but overall clean & F-VF, UPSS \$30, Ph | 25.00 | Scott |
| 451 | * | UX1d(S2), edges bumped & a little dirty, F+, UPSS \$250, Ph | 250.00 | Scott |
| 452 | * | UX2(S3), fresh & clean, VF+, UPSS \$200, Ph | 190.00 | Scott |
| 453 | * | UX2 w/ broken O (S3c), fresh, clean, VF+, UPSS \$225, Ph | 190.00 | Scott |
| 454 | o | UX2 Type I w/ broken O (UPSS S3c), It Bas Obispo Hs-11 11/24/09, It overall toning, UL corner cr, F, Scott \$80, Ph | 125.00 | UPSS |
| 455 | * | UX2(S4), bumped lightly near indicia, F-VF, UPSS \$200 | 190.00 | Scott |
| 456 | o | UX2 (S7) w/ #31, It Ancon 6/18/11, minor corner bumps, F-VF, UPSS \$175, Ph | 80.00 | Scott |
| 457 | * | UX3(S6), It toning from mount LL, tiny flecks near indicia, F+, UPSS \$200 | 190.00 | Scott |
| 458 | * | UX3 w/ broken Z (S6b), VF, UPSS \$200 | 190.00 | Scott |
| 459 | * | UX4(S10), VF, UPSS \$150, Ph | 160.00 | Scott |
| 460 | o | UX4(S10) Gatun 10/17/14, a bit toned, F+, UPSS \$100 | 60.00 | Scott |
| 461 | o | UX4 (S10), Cris 1/2/14 to Germany w/ #38, F-VF, UPSS \$100, Ph | 60.00 | Scott |
| 462 | o | UX4 (S10), pressure from Cris mc 1/16/15 'embosses' card, o/w neat, clean & F-VF, UPSS \$100 | 60.00 | Scott |
| 463 | o | UX4 (S11), Gatun 10/2/22, a bit faded, F-VF, UPSS \$75, Ph | 60.00 | Scott |
| 464 | o | UX5 (S12), noticeable UR corner cr just clear of indicia, L corners bumped, lt.toned area center B, It cancel, overall neat & clean appearance, UPSS \$500, Ph | 450.00 | Scott |
| 465 | o | UX6 (S13), Gatun 2/3/25, pre-printed meeting notice rev, hinge marks rev, 2 sm lt ink marks lower edge, F-VF, UPSS \$1,100, Ph | 1,100.00 | Scott |
| 466 | * | UX7 (S14), VF, UPSS \$100 | 85.00 | Scott |
| 467 | * | UX8 (S15), VF+, UPSS \$85 | 80.00 | Scott |
| 468 | * 25 | UX9-21 (S16-34) & UXC1-5 (SA1-6), VF group | 105.00 | Scott |
| 469 | o 4 | UX10-UX12 & UX19, each used commercially, F-VF, Ph | 9.00 | Scott |
| 470 | * 4 | UX11-UX14, VF | 13.65 | Scott |
| 471 | * | UX13 w/ inverted surcharge (UPSS S22a), clean & VF, Ph | 750.00 | UPSS |
| 472 | * | UXC1 w/ flaw above A (SA1a), VF | 25.00 | UPSS |
| 473 | o | UXC1, Curundu mc 2/15/61, 'commercial' use, UR corner crease & other lt creases, nice appearance | 7.50 | Scott |
| 474 | o | UXC4 w/ 105 Bal hs 4/18/78 to Balboa, no message, VF, UPSS \$15, Ph | 16.00 | Scott |
| 475 | o | UXC5 Bal mc 2/16/76 to USA, no message, VF, UPSS \$15 | 15.00 | Scott |

FIRST DAY COVERS INCLUDING POSTAL STATIONERY

| | | | | |
|-----|----|--|--------|-------|
| 476 | | 107 block tied by Bal Hts mc 6/25/29 to reg, blue hs'd 25th Anniv of CZPS, lt fingerprints (postal clerk?), o/w F-VF+, Ph | 20.00 | Est |
| 477 | | 119 pl #21878 blh UR bled by Bal Hts mc, UA, printed CA, F-VF | 12.00 | Est |
| 478 | | 120-135 plus C15-C20 on large env, each stamp F-VF or better, tied on reg to Scotland by FD-3a, minor edge crs do not affect stamps, neat, clean & VF, Ph | 250.00 | Est |
| 479 | 8 | 120-135, mostly diff CA makers used for complete set on 8 covers, stamps F-VF or better, pn Add exc 25¢ & 50¢ TA, neat & colorful, F-VF+, Ph | 132.50 | Scott |
| 480 | 16 | 120-135 blocks on 16 covers, Crosby CAs w/ photo insets, stamps well centered and neatly placed, TA, minor faults on a few, clean & beautiful, F-VF+, Ph | 250.00 | Est |
| 481 | 7 | 139 on 7 covers: Ft Davis, Ancon, Ft Amador, Diablo Hts, Bal Hts, Marg & Cris; sm official hs CA, TA, F-VF | 14.00 | Est |
| 482 | | 141 Bal Hts FD-2 4/17/48 w/ signature of designer Mead Bolton & Dr. Zetek head of CZ Biological Area, UA, NC, VF | 20.00 | Est |
| 483 | | 146 Bal Hts FD-2 8/15/51, red Pent Art CA, UA, minor edge wrinkles, F-VF | 4.00 | Est |

FIRST DAY COVERS INCLUDING POSTAL STATIONERY (contd)

| | | | | |
|-----|----|---|--------|-------|
| 484 | | 151 Bal FD-2a 2/8/60, multicolor Overseas Mailer CA, TA, VF | 3.00 | Est |
| 485 | 3 | 163 bklt panes, all three tab types each on legal-size, printed CA showing dredge, UA, crisp & clean, VF | 12.00 | Est |
| 486 | | 163 pl #173356 LR tied on legal-size card w/ 3" x 3" sunken lithograph, signed by Al Sprague (designer) w/ "28/33", also personalized note & 2nd signature, VF, Ph | 30.00 | Est |
| 487 | | C5a (F), tied by Cris mc 12/31/29, addressed to Roessler, F-VF, Ph | 60.00 | Est |
| 488 | | C6 Curundu mc 1/3/49 on local pc, F-VF | 5.00 | Est |
| 489 | 11 | C8 pairs on covers from 11 diff CZ towns, (Anc, Bal Hts, Cocoli, Coco Solo, Corozal, Ft Am, Gamboa, Gatun, Ped Mig, Rodman, Upham), NC, TA, clean, F-VF | 20.00 | Est |
| 490 | | C12 (VF), Anderson CA, neatly hand addressed in ink, F-VF+ | 22.50 | Scott |
| 491 | 7 | C15-C20 on sep covers w/ Evans CA (5¢ block & 10¢ pair), extra cover w/ 5¢ & 10¢, TA, all stamps well centered & sound, clean, VF, Ph | 105.50 | Scott |
| 492 | | C32 Ft Gulick FD-2a on LR pl# blk, Smith CA, UA, VF | 5.00 | Est |
| 493 | 4 | C50 matched set of pl # 168773/172229 blocks on four neat & clean covers, Bal mc 2/11/74, green prt CA, UA, VF+ | 25.00 | Est |
| 494 | 4 | C50 matched set of pl # 168773/172228 blocks on four neat & clean covers, Bal mc 2/11/74, green prt CA, UA, VF+ | 25.00 | Est |
| 495 | 4 | C50a full bklt panes on four covers, all four diff tabs, neat & clean, Bal mc 2/11/74, green prt CA, UA, VF+ | 30.00 | Est |
| 496 | | UXC4 Bal SI012 2/12/68, UA, NC, pn LR, F-VF | 6.00 | Est |

FIRST FLIGHT COVERS

| | | | | |
|-----|---|--|-------|------|
| 497 | | F5-2 franked w/ 88(VF) & 90(perfs touch T), Cris mc 2/10/20, hs'd blue CA, neat, VF | 15.00 | Est |
| 498 | | F5-8, C3 on lt yellow env, Cris 5/21/29, only 60 flown, clean, VF, Ph | 40.00 | AAMC |
| 499 | | F5-18a, C1(VF) on golden env, Cris 6/21/29, clean, F-VF+ | 10.00 | AAMC |
| 500 | | F9-26 Cris 7/16/29 ties C1(3), purple hs'd CA, Santiago bs, neat & clean, F-VF | 12.50 | AAMC |
| 501 | | Incoming Guayaquil to Cris 5/4-6/29, 'courtesy' pre-inaugural cover, treated as paquebot, Cris P-1 on front, F-VF | 20.00 | Est |
| 502 | 3 | Three incoming FF to CZ: 1) F5-41 San Jose 3/11/30, fold across B, 2) F9-34 Santiago 7/27/29, 3) F-8-30 Guatamala 3/16/20, pn notations, F-VF | 17.50 | Est |
| 503 | | C11 & 90 tied by Cris K-4 to reg cover, like L93 but to Virgin Isl, Cris Rg-20 11/18/31, hs 11/25/31 American Clipper CA, held for flight, colorful, F-VF, Ph | 50.00 | Est |

SPECIAL EVENTS COVERS

| | | | | |
|-----|--|---|-------|-----|
| 504 | | Byrd Exp SS City of New York cancel ties 106, all-over green cachet (much clearer inking than usual) plus additional red CA in LR corner showing penguin & ice, lt Byrd Exp dc, lt Roessler hs address, not your typical Byrd cover!, F-VF, Ph | 40.00 | Est |
| 505 | | Last Day 2¢ letter rate, U8 & 105, Bal Hts mc 7/5/32, corner bends & lt creases, F | 10.00 | Est |
| 506 | | C10 tied by Coco Solo Hs-11 2/6/36, hs CA "1936 Advanced Base Operations", a.m. to Galapagos Isl, toning from env adhesive, F-VF, Ph | 25.00 | Est |
| 507 | | First Ocean-to-Ocean Aircraft Carrier Mail Service - Victory Loan Drive, Bal mc & Uss Salerno hs, cover #113, signed, top edge a bit toned & rough, F-VF, Ph | 40.00 | Est |
| 508 | | 50th Ann of Tivoli Hotel: 14 x U16 (Rodman, Marg, Paraiso, Cris, Bal Hts, Coco Solo, Ft Amador, Ft Clayton, Ft Davis, Gamboa, Gatun, Hw AFB, Diab Hts, Alb AFB) purple hs'd CA, UA exc Rodman hs add, F-VF | 28.00 | Est |

COVERS

| | | | | |
|-----|---|--|--------|-------|
| 509 | | 4-8 lt tied by K-1 w/ Ancon Hs-1a Dic 11, 1094, 5¢ perfs touch T, 8¢ SE at T, stamps sound & centered F, cover unaddressed, vert crease far L, F-VF, Ph | 500.00 | Est |
| 510 | | 6 (F-VF+), Empire Hs-1b 12/7/04 & K-1, purple Gorgona Hs-1 12/8/04, clean & fresh, VF, Ph | 250.00 | Scott |
| 511 | | 9 tied by nice strike of Culebra Hs-2a 3/15/06 on Kohpeke pc "Ruinas del Coto de Jesuitas, Panama" rust area on stamp, o/w F-VF, Ph | 15.00 | Est |
| 512 | | 9 (F+) tied on face of photo pc (inscribed Culebra, C.Z..) by Ancon M-1 2/9/15 to Coveleski, F-VF, Ph | 15.00 | Est |
| 513 | | 9 (F-VF) tied by clear LaBoca Hs-2 (4-in-bars) 10/16/05 to Toledano ppc "Tipo de Indigena en Traje Nacional", Cris Rc-2 rev, bumped LR, VF, Ph | 40.00 | Est |
| 514 | 4 | Interesting postmarks on 4 distressed covers, 1) 11 (lt scuff) Culebra Hs-2a 1/10/06, 2) 10 Ancon Sta A 5/26/06, 3) UX1 creases & toned San Pablo 1/27/08, 4) 39 Corozal 1/19/18 | 18.00 | Est |
| 515 | | 11.A.7 (2 PANAMAs R) (VF+), clear Cris Hs-2a 1/6/06, sm toned area, VF+, Ph | 40.00 | Est |

COVERS (contd)

| | | | | |
|-----|---|--|--------|-------|
| 516 | | 16a tied by nice Ancon Sta A 7/26/06 to Kollpeke photo pc "Ruinas de Templo de Santo Domingo, F-VF, Ph | 20.00 | Est |
| 517 | | 16b (sound, perf cut T) tied by Paraiso 12/26/06 to leather pc showing "Office of the Chief Engineer", F-VF, Ph | 125.00 | Est |
| 518 | | 16b tied on face of Maduro ppc "Traveler's Palm", Paraiso Hs-11 1/14/14, F-VF | 15.00 | Est |
| 519 | | 22 (sm scuff on stamp, o/w F-VF) tied by RMS-1 type oval 10/30/10, undivided back ppc "Canal Bldg - Panama", F-VF | 10.00 | Est |
| 520 | | 22 (6.8mm spacing) clear Cris Sta A Hs-4 7/28 (prob 1909), perf tips & card a little toned, card a bit distressed B, a nice example of postmark, F-VF+, Ph | 125.00 | Est |
| 521 | | 22 (perf blunt & rubbed) tied by clear RMS-1a 6/7/09 Tr-2, F-VF, Ph | 15.00 | Est |
| 522 | 6 | 22 on six Maduro ppc from 1907-09, Ancon Sta A, Empire, Las Cas, Cris, Ped Mig (2), F exc Sta A is F-VF+, Ph | 35.00 | Est |
| 523 | | 23 6.8mm spacing (VF), LaBoca Hs-11 6/7/09 on ppc to Sweden, VF, Ph | 15.00 | Est |
| 524 | 4 | 31 (each F-VF) on four Maduros, 2 Ancon, Cris, Gatun, 1910-13, F-VF | 20.00 | Scott |
| 525 | | 31 on two Maduro ppc, 1) Ancon mc 6/27/14, F-VF, 2) single from handmade bklt tied Las Cas 3/5/15, F | 8.00 | Est |
| 526 | | 31(11mm CANAL) strong strike Paraiso Hs-11 3/26/12, F+ | 7.50 | Est |
| 527 | | 31& 32(2) tied by Las Cas Hs-11 11/4/11 to Switzerland, F-VF, Ph | 20.00 | Est |
| 528 | | 31-35 set on front to Coveleski, Paraiso 5/22/191?, It toning on a few perf tips, neat F-VF presentation of Type I set, Ph | 75.00 | Est |
| 529 | | 32 (perfs touch T) on face of Maduro ppc "Tobacco Farm", Tabernilla 9/28/11, another clear strike on add side, F-VF | 20.00 | Est |
| 530 | | 32 on pic side of Maduro to Silesia (now Poland), Ancon 5/5/10, private hs of sender's add & "PRINTED MATTER" on message side, F-VF | 10.00 | Est |
| 531 | | 32 (2 pairs & 33 (pair) all 8.5mm spacing w/ 10.5 Canal, stamps w/creases & edge faults, tied by cord cancels & NY reg label to legal-size blue reg cover to London, faded Ancon Rg-7 8/29/10 on front, looks better than it sounds, Ph | 40.00 | Est |
| 532 | | 38 (F-VF) solo tied to unsealed 3rd-class envelope, Ancon 12/2/13, VF, Ph | 10.00 | Est |
| 533 | | 39 (oxidized) tied by Ft Randolph Hs-11, WWI Mil Censorship Box, toned, F+ | 25.00 | Est |
| 534 | | 39(VF) tied by It Empire Hs-11 10/17/18 w/ clear WWI Mil Censorship box ("No 148"), clean, F-VF+, Ph | 25.00 | Est |
| 535 | | 39 8.5mm spacing from handmade bklt tied to sm cover Ancon 3/21/14, even margin & perfs on 3 sides, R side ragged edge from cutting of booklet, F-VF | 12.00 | Est |
| 536 | | 41 (F-VF) on U2, Culebra 4/19/19 reg rev, It WWI Mil Censorship hs box, F-VF | 40.00 | Est |
| 537 | | 42 on face of real photo pc w/ inscription "Scene of Gatun Lake, Panama Canal", stamp close to edge & perfs worn, Ancon mc 4/7/15 to Coveleski, clean | 17.50 | Est |
| 538 | | 43 (F-VF) Las Cas Hs-11 3/31/15 on Maduro pc w/ lg Goethals portrait w/ facsimile signature, sm edge staining, F-VF, Ph | 20.00 | Est |
| 539 | 2 | 60 Balboa Hs-11 7/12/22 on Maduro ppc & 61 Ancon M-1 7/27/22, F-VF | 21.00 | Scott |
| 540 | | 77 (F-VF) & pair 72 tied Bal Hts Rc-4 1/18/26 to reg from pm, Bal Hts & Cris Rg-20 rev, clean, F-VF+, Ph | 50.00 | Scott |
| 541 | | 99, 102, 71(5) on U13 (UPSS 32) reg to Switzerland, Bal Hts reg 12/23/32, bend along R edge, clean & F-VF, Ph | 40.00 | Est |
| 542 | | 102 & 111 on reg to US, Bal Hts reg 8/15/32 rev, a bit wrinkled at R, F | 10.00 | Est |
| 543 | | 105 tied by mute Bal Hts mc to unsealed 3rd-class to US, WWII purple round 'U. S. Censorship', Masonic cc, F-VF, Ph | 10.00 | Est |
| 544 | | 107, 108(SE) & 115 Ancon oval on local reg cover, Ancon & Cris reg 1/12/34 rev, F-VF, Ph | 25.00 | Est |
| 545 | | 111 tied by Cris 11/16/55 pay certified fee on philatelic cover w/ uncanceled US 15¢ certified mail stamp, block of 137, cert label, F-VF, Ph | 10.00 | Est |
| 546 | | 117 on ham radio pc to Bolivia, Cris mc 1/28/50, LaPaz receiver, clean, F-VF | 3.00 | Est |
| 547 | | 132 solo pays 15¢ reg fee & 3¢ postage on phil agency cover, order form enclosed, Bal Hts & Cris reg 1/22/41 rev, stained across B, o/w F-VF, Ph | 20.00 | Est |
| 548 | 6 | Six CZ ham radio postcards each mailed w/ 138, Ft Clayton (2), Coco Solo, Bal (2), Albrook AFB, a little doggy, F | 10.00 | Est |
| 549 | | 146 block (VF) on reg a.m. from Bal Hts pm to APO, rev Bal Hts & AMF Bal dc 2/5/52, APO receiver rev, F-VF | 10.00 | Est |
| 550 | | Three a.m. covers w/ commemoratives: 1) 147 pair 8/4/55, 2) C33 11/20/62, 3) 157 pair 1/24/66, clean, F-VF | 7.50 | Est |

COVERS (contd)

| | | | | |
|-----|-----|---|----------|-------|
| 551 | | 155 (2 pairs, VF), Bal Hts M-3 12/3/63 to E. Germany, correct rate, F-VF, Ph | 20.00 | Est |
| 552 | | 164a (tagged) strip of 3 tied by Howard AFB mc 9/10/79 to UA envelope, stamps F-VF centering, clean, VF, Ph | 75.00 | Est |
| 553 | | C1 (SE, toned perfs R) solo tied by Ancon mc 12/17/30 to commercial a.m. to Ecuador, bs Guayaquil & Quito, correct rate, clean, VF, Ph | 40.00 | Est |
| 554 | | C1, C3 pair (perf cut R) & C4 on flown Zeppelin card from Cris to Germany via NY, Cris 5/22/30 ties CZ stamps, w/ US 65¢ airmail tied by NY 5/29/30, lt corner crs UL & LL, neat & colorful, VF, Ph | 1,500.00 | Est |
| 555 | | C3 tied by Cris 11/14/29 to blue comm SCADTA cover from Bogata, UR corner cr affects one Colombian stamp, clean & neat, F-VF, Ph | 20.00 | Est |
| 556 | | C5 (F+) on comm SCADTA cover, Colombia to Costa Rica, Cris 9/16/30, CR receiving rev, F-VF | 12.00 | Est |
| 557 | | C6, C9, C11(2), C13 & C14, lightly cancelled by Cris Hs-11 2/1/32, all stamps F-VF, clean, VF, Ph | 40.00 | Est |
| 558 | | C7, C9 (SE), C10 (SE), C11 on Euro size to France, Cris Hs-11 8/11/35, F-VF, Ph | 12.00 | Est |
| 559 | 2 | C9 & C10 pay a.m. rate to Bogota (Cris 2/12/38) & C13 (SE) pays 40¢ a.m. rate to Buenos Aires (Ancon 1/5/45), each toned, F+, Ph | 28.00 | Est |
| 560 | | C10 & 15¢ US Spec Del on a.m. to Texas, Bal 5/9/41, backstamped Spec Del service in Texas, a little toned, F-VF, Ph | 15.00 | Est |
| 561 | | C14 (F-VF) solo tied Bal mc 4/1/35 to neat philatelic cover to US, VF, Ph | 35.00 | Est |
| 562 | | C16 & C11, Ancon Hs-11 11/26/-- w/ written "AIRMAIL/ Special Delivery", F+ | 8.00 | Est |
| 563 | 3 | Three a.m. cover to Europe w/ correct rates: 1) C23 pair Bal mc 7/27/61, 2) C17 & 117 uprating UC4 Bal Hts mc 12/19/60, 3) C46 & 139 Bal mc 4/20/76, F-VF | 18.00 | Est |
| 564 | | C21(F-VF) used on Return Receipt form from NY 3/10/58, proper extra-territorial use to obtain air mail response to Registered mail from Balboa, F-VF, Ph | 15.00 | Est |
| 565 | | C29 (F-VF) Ancon mc 9/15/60 on CZSP announcement card (Finder #21) to Australia, HR on rev, proper rate, F-VF+, Ph | 20.00 | Est |
| 566 | | C32 blk pays 60¢ reg fee on UC4, Bal dc 12/27/61 rev, F-VF+ | 12.00 | Est |
| 567 | | C35 & pair 136 pay double a.m. rate to US, Bal 11/23/63, a bit wrinkled, | 8.00 | Est |
| 568 | | C47 & 111 tied by Ft Amador roller RI-1 to reg legal-size UC14, 95¢ reg fee, minor edge creases, clean, Ft Am DC-10 rev 6/6/73, F-VF+, Ph | 20.00 | Est |
| 569 | | CO14 (SE T & R, pulled perfs, Diablo Hts 4/11/49 on legal size to US, F+, Ph | 50.00 | Scott |
| 570 | | J25 (F-VF), J26 (F) & J27 (perf cut T) tied by lt Cris K-4 to rev of short paid a.m. from Canada, folded betw stamps & opened rough R, still F-VF, Ph | 60.00 | Est |
| 571 | | J18 pl #13844 T tied to phil cover, a bit toned, Ancon 5/25/29 ties 72, F+, Ph | 50.00 | Scott |
| 572 | 6 | Six foreign destination covers w/ correct a.m. rates: 15¢ pc to Canada (1969), 25¢ to Germany (1969), 30¢ to Norway (1973), 35¢ to England (1974), 22¢ aerogram to Poland (1977), 35¢ to Argentina (1979), two legal size, F-VF group | 25.00 | Est |
| 573 | 200 | 200 covers & postcards, most comm use w/ some FDCs, most 1950-79, mixed condition, one third large size, some interesting items, wide range of postmarks | 100.00 | Est |

APO AND NAVY COVERS

| | | | | |
|-----|---|---|-------|-----|
| 574 | | APO 828 mc w/ censor box (00373) on "FREE/(Official War Ballot)" pc to Washington state, application for ballot, F-VF, Ph | 20.00 | Est |
| 575 | 7 | Seven diff APO numbers in postmarks: mc of 825, 827, 828 & 832; handstamps of 829, 836 & 837; most a bit doggy, F+ group | 12.00 | Est |
| 576 | 5 | Five diff APO numbers in ret address: 827, 828, 834, 835 & 836, all handstamps, a bit doggy, F group | 8.00 | Est |
| 577 | 3 | Three US Navy postmarks w/ ret add: 1) Patrol Wing Three, NAS, Coco Solo, 2) Naval Hosp, Coco Solo, 3) Fleet PO, Balboa, F-VF group | 8.00 | Est |

OTHER COVERS & PHILATELIC ITEMS

| | | | | |
|-----|--|--|-------|-----|
| 578 | | Clear NY & Canal Zone RPO SP-2 12/9/09 North tied 1¢ Panama stamp to photo pc w/ three scenes, VF, Ph | 20.00 | Est |
| 579 | | US return receipt for Reg Article, unclear Ancon Hs-11 12/7/20, F+, Ph | 8.00 | Est |
| 580 | | Incoming a.m. reg cover from Honduras, pretty Tela "use el correa aereo" on rev w/ Cris reg bs 10/17/29, VF | 18.00 | Est |
| 581 | | Spec Del on ship cover, USS Wyoming hs w/ Balboa Canal Zone in killer bars 3/12/26 tied US 2¢(2, damaged) & 10¢ blue US spec del, a bit ragged at T, F+, Ph | 30.00 | Est |

OTHER COVERS & PHILATELIC ITEMS (contd)

| | | | | |
|-----|-----|--|-------|------|
| 582 | | "Problem 20, Canal/Zone & Caribbean '39" purple handstamp, pair US 1.5¢ prexies tied by undated Hawaii roller, addressed to Calif, consigner describes as scarce crash cover but we have no other info concerning it, w/ printed CA listing battle ships in Spanish Amer War in Cuba, clean, VF, Ph | 50.00 | Est |
| 583 | o | CZPS Ann. Card, Finder C1, "O" dropped (UPSS S19pa), Bal 5/16/61, cr UL, F | 25.00 | UPSS |
| 584 | | UX11 Official Business (UPSS S19p), Bal mc 10/5/61, announcement card for 15¢ (C32) air mail (Finder C-2), VF | 20.00 | UPSS |
| 585 | o | CZPS Announcement Card, Finder C3, "O" dropped (UPSS S19pa), Bal 1/6/62, pen notes rev, o/w VF, Ph | 25.00 | UPSS |
| 586 | o | CZPS Announcement Card, Finder 48, unused, VF | 7.00 | Est |
| 587 | o 4 | Used CZPS forms: 1) two receipts for insured parcels, 2) receipt for PO Box payment, 3) facing slip for mail to Cris, F-VF | 6.00 | Est |

PHILATELIC LITERATURE & CATALOGS

| | | | | |
|-----|--------|---|-------|-----|
| 588 | book | Postal Markings of the Canal Zone, 2nd ed, by Entwistle, 328 pp, like new | 10.00 | Est |
| 589 | * book | Canal Zone Stamps by Plass, Brewster & Salz, 1986, 345 pp, hb, new | 50.00 | Est |
| 590 | book | Canal Zone Stamps, ditto, like new | 50.00 | Est |

PICTURE POSTCARDS

| | | | | |
|-----|---|---|-------|-----|
| 591 | * | "Unloading a Ship-load of Lumber...", Maduro No 72c, brown-ink back, F-VF | 5.00 | Est |
| 592 | * | "Slide in Culebra Cut...", "Published at Post Card Headquarters..." clean, F-VF | 5.00 | Est |
| 593 | 4 | Four cards showing the murals in the Admin Building: Gaillard Cut, The Making of the Lock Gates, Miraflores Locks, the Making of the Spillway, beautiful & VF | 20.00 | Est |

CANAL ZONE MEMORABILIA

| | | | | |
|-----|-------|---|-------|-----|
| 594 | print | Large double-page print ("20 x 14") of "The Great Culebra Cut - Drawn by Charles Graham from Photographs" from 1885 issue of Harpers Weekly, vert fold in middle as issued, clean & VF | 20.00 | Est |
| 595 | | Panama Railroad spike mounted on piece of old RR tie, plaque says "Original Tie 1853-1869/Spike 1910" | 40.00 | Est |
| 596 | | 20 diff CZ ham radio QSL cards 1963-79, 6 used / CZ stamps to US, all w/ diff cancels, bet 1964-74, F-VF | 40.00 | Est |
| 597 | 5 | Five blank CZ certificates for various safety awards, clean & VF | 5.00 | Est |
| 598 | 8 | Eight blank CZ certificates for various safety awards, clean & VF | 8.00 | Est |
| 599 | 6 | Six 9" x 6.25" sepia prints of construction work, text on rev, pretty & VF | 24.00 | Est |
| 600 | 5 | Five 9" x 6.25" sepia prints of construction work, text on rev, pretty & VF | 20.00 | Est |
| 601 | 24 | 24 misc paper items: pamphlets, maps, labels postcard packet, menus, coupon books & other interesting stuff, several surprising items! | 20.00 | Est |
| 602 | | "Gorgona Election Ballot... November 5, 1912" with apparent totals of votes cast per candidates: Taft, Wilson, Debs, Roosevelt plus local offices (Debs won there!), folded, unusual, F-VF, Ph | 15.00 | Est |
| 603 | book | The Panama Canal in Peace and War, Padeford, hb, 327 pp w/ several foldout maps/charts, VF | 15.00 | Est |
| 604 | | Goethals signature dated 12/22/17 on his business letterhead, "I will be glad to drop in and discuss the subject of the Hudson River Tunnel with you." | 40.00 | Est |
| 605 | | "Modern Marvels: Panama Canal", History Channel VHS tape, sealed, 50 min | 5.00 | Est |
| 606 | print | Colorful illustrated 24" x 17" map of Panama & Canal Zone, "Official Army Souvenir", produced by "USARCARIB Engineer C.Z. Feb 60", not folded & very suitable for framing, VF | 8.00 | Est |

428



430



427

PANAMA CANAL LODGE No. 1,
KNIGHTS OF PYTHIAS
R. L. BURMESTER, M. R. & S.
Box 222, - Balboa, C. Z.

429



eighty

Mr. Fred O. Kester

After _____ days return to

Cristobal, Canal Zone

435



432



After _____ days return to

Canal Zone.

436



433



449

UNION POSTALE UNIVERSELLE
REPÚBLICA DE PANAMÁ
ESCRIBASE EN ESTE LADO LA DIRECCIÓN SOLAMENTE



Mrs. Carrie E. Greene

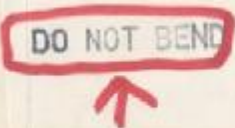


438

PHILATELIC MAIL
Please Cancel Lightly

443

PHILATELIC MAIL
Please Cancel Lightly



INSURED
No. 647317

CUSTOMS—DOUANE C1
May be returned if opened
Post office (cancel date)

Col. R. A. Stevens, AF-Ret.
P. O. Box 1911
Balboa, Canal Zone
Philatelic Mail
Please Cancel Lightly
Value \$ 99.50
Date 6/15/29

UNION POSTALE UNIVERSELLE
REPÚBLICA DE PANAMÁ
ESCRIBASE EN ESTE LADO LA DIRECCIÓN SOLAMENTE

450

To the Postmaster Tabernilla Canal Zone



UNION POSTALE UNIVERSELLE

(R) SERVICIOS DE RECOMENDADOS Y DE "CARTA-PAQUETE"

Esta carta debe entregarse a un empleado de la Oficina de Correos para ser Recomendada y obtener el recibo correspondiente.

444

Espacio para franqueo ordinario.

Para retirar el contenido escriba sobre la línea roja.

(R) SERVICIOS DE RECOMENDADOS Y DE "CARTA-PAQUETE"

Esta carta debe entregarse a un empleado de la Oficina de Correos para ser Recomendada y obtener el recibo correspondiente.

NO REGISTERED

445

DIRECCION No.

American Institute of Mentalism
701 North Belmont

Para retirar el contenido escriba sobre la línea roja.

RECOMENDADO

10 cts. ZONA CANAL

UNION POSTALE UNIVERSELLE

REPÚBLICA DE PANAMÁ

ESCRIBASE EN ESTE LADO LA DIRECCIÓN SOLAMENTE.

451

UNION POSTALE UNIVERSELLE

REPÚBLICA DE PANAMÁ

ESCRIBASE EN ESTE LADO LA DIRECCIÓN SOLAMENTE.

454

Mr. E. C. Ernst

UNION POSTALE UNIVERSELLE

REPÚBLICA DE PANAMÁ

ESCRIBASE EN ESTE LADO LA DIRECCIÓN SOLAMENTE.

452

UNION POSTALE UNIVERSELLE

REPÚBLICA DE PANAMÁ

ESCRIBASE EN ESTE LADO LA DIRECCIÓN SOLAMENTE.

453

CARTE POSTALE

459

UNION POSTALE UNIVERSELLE

REPÚBLICA DE PANAMÁ

ESCRIBASE EN ESTE LADO LA DIRECCIÓN SOLAMENTE.

UNION POSTALE UNIVERSELLE

REPÚBLICA DE PANAMÁ

ESCRIBASE EN ESTE LADO LA DIRECCIÓN SOLAMENTE.

456

UNION POSTALE UNIVERSELLE

REPÚBLICA DE PANAMÁ

ESCRIBASE EN ESTE LADO LA DIRECCIÓN SOLAMENTE.

461

UNION POSTALE UNIVERSELLE

REPÚBLICA DE PANAMÁ

ESCRIBASE EN ESTE LADO LA DIRECCIÓN SOLAMENTE.

463

CARTE POSTALE

461

Germany

UNION POSTALE UNIVERSELLE

REPÚBLICA DE PANAMÁ

ESCRIBASE EN ESTE LADO LA DIRECCIÓN SOLAMENTE.

465

R. H. Luce

UNION POSTALE UNIVERSELLE

REPÚBLICA DE PANAMÁ

ESCRIBASE EN ESTE LADO LA DIRECCIÓN SOLAMENTE.

463

471

THIS SIDE OF CARD IS FOR ADDRESS

UNION POSTALE UNIVERSELLE

REPÚBLICA DE PANAMÁ

ESCRIBASE EN ESTE LADO LA DIRECCIÓN SOLAMENTE.

UNION POSTALE UNIVERSELLE

REPÚBLICA DE PANAMÁ

ESCRIBASE EN ESTE LADO LA DIRECCIÓN SOLAMENTE.

464

M. Meisel
box # 76
Clintonville, Wis.

Y A LA VUELTA LA COMUNICACION UNION POSTAL UNIVERSAL



469



474



487



478

479



480



476



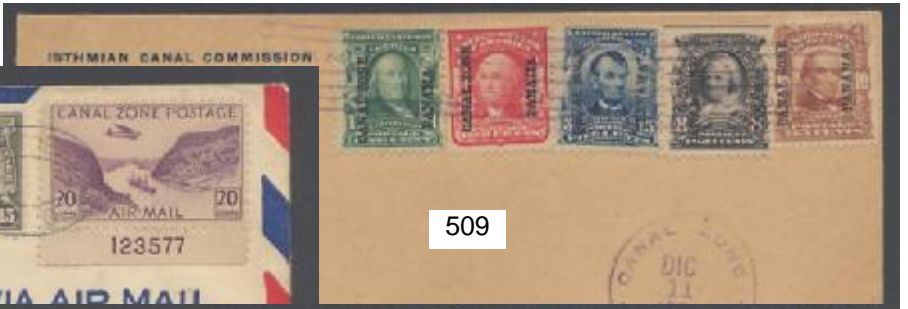
498



491



504



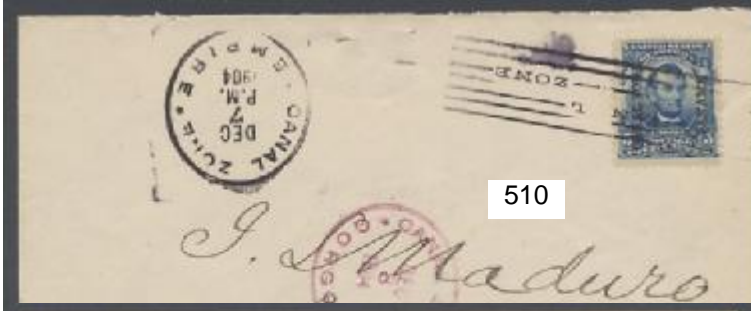
509



503



507



510



511



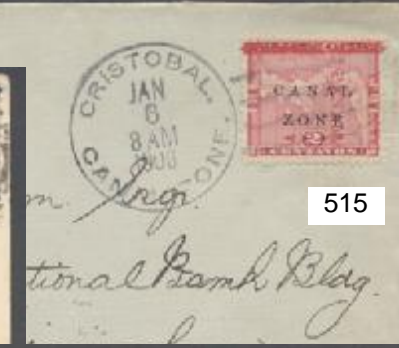
512



513



516



515



486



517



506



ADVANCED BASE OPERATIONS
of VP Squadron Five-F from
C.Z. to Galapagos Islands
Via Santa Elena
BYING UNITED STATES MAIL.

Dick Fitzpartick
U. S. S. Wright,
Galapagos Island,



522



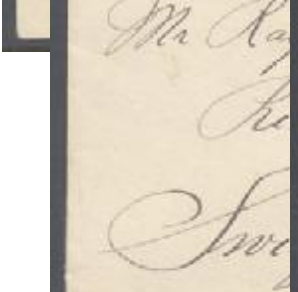
520



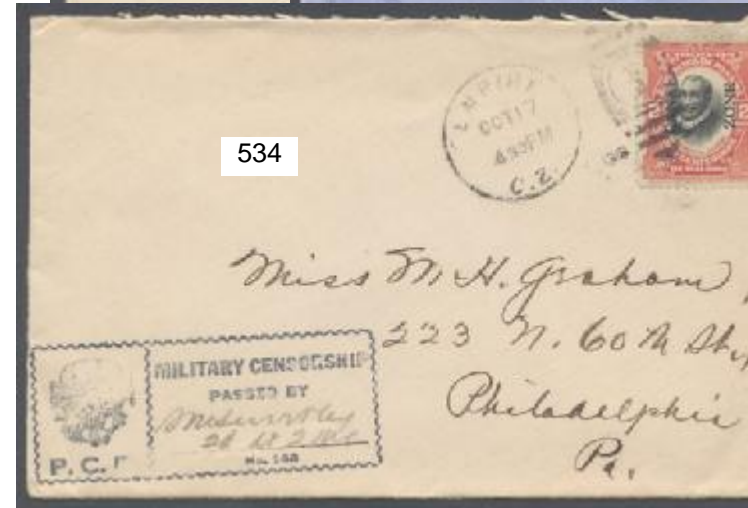
521



523



531



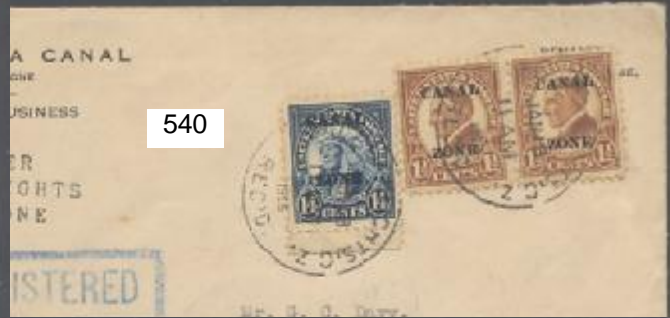
534



532



538



540

O. A. SCHMIDT
AFTER 10 DAYS RETURN TO
P. O. BOX 181
BALBOA HEIGHTS, CANAL ZONE

541



547

Postmaster
Balboa Hts
C.Z.

George Guelhals

Colonel George W. Guelhals, U.S.
Deputy and Chief Engineer, Panama Canal



545

CERTIFIED MAIL
No 839119

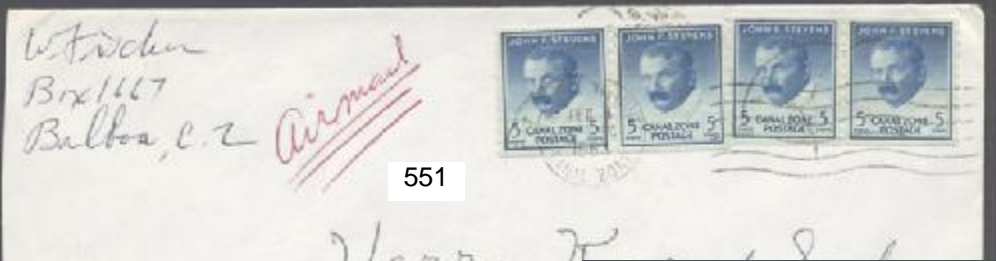
G. T. ENTWISTLE
11 VARSITY COURT
NEWARK, N. J.



544

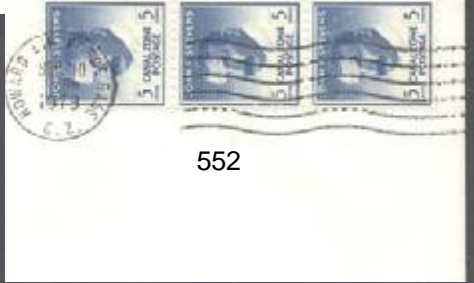
WEST INDIA OIL COMPANY
208 ANCON, C. Z.

Mr. C. I. Langdon,
West India Oil Company,
P. O. Box 5063,
Cristobal, Canal Zone.



551

W. Fischer
Box 1167
Balboa, C.Z. *Airmail*



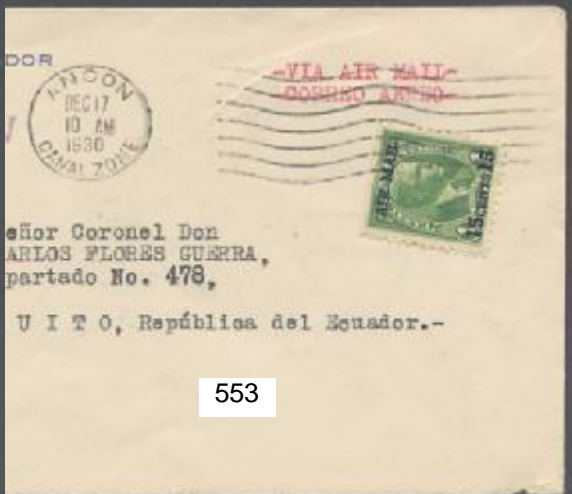
552



ANCON MASONIC TEMPLE
P. O. BOX 285
BALBOA HEIGHTS, CANAL ZONE
RETURN POSTAGE GUARANTEED

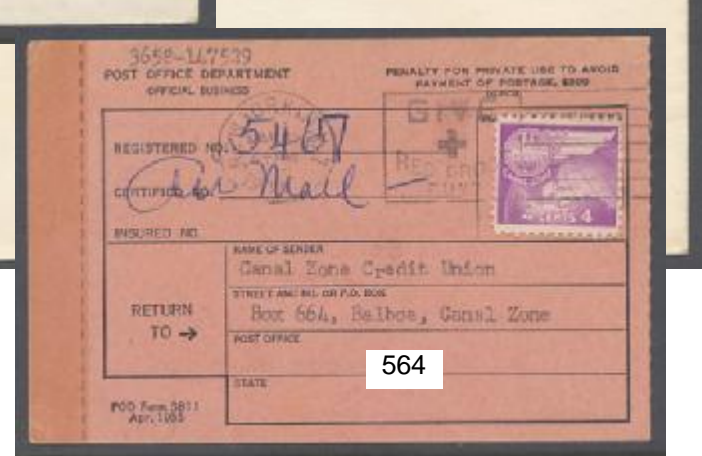
MR V WENDZINSKI
360 GREENE AVE
BROOKLYN, N. Y.

U.S. CENSORSHIP
EXAMINED
By 1990



Señor Coronel Don
CARLOS FLORES GUERRA,
partado No. 478,
U I T O, República del Ecuador.-

553



Gorgona Election Ballot

Canal Zone, Isthmus of Panama

November 5, 1912

Republican

Democratic

Socialist

Progressive

WILLIAM H. TAFT - 10

WOODROW WILSON - 101

EUGENE V. DEBS - 285

THEODORE ROOSEVELT - 1

602

THE PANAMA CANAL

OFFICIAL BUSINESS

RETURN AFTER 30 DAYS TO

SPECIAL ENGINEERING DIVISION
Box 1005

DIABLO

569



VIA

Canal Zone Postal Service

PHILATELIC AGENCY
BALBOA HEIGHTS, CANAL ZONE
OFFICIAL BUSINESS



THIS SIDE OF CARD IS FOR ADDRESS

585

BRUCE L. H...
150-42 75TH
FLUSHING 6



571



BATTLESHIPS
February 15, 1898, U.S.S. "MAINE" blown up in Havana Harbor, Cuba.
March 7 - Mar 24, 1898, U.S.S. "OREGON" in historic sail around the Horn from Bremerton, Washington to Jupiter Inlet, Florida.
July 3, 1898, Battle of San Juan de Cule, Battleship of the South Atlantic Squadron, U.S.S. "PERU" sunk.
Also of Admiral William T. Sampson, commander of the Second (Atlantic) Squadron, U.S.S. "DROGHT" flagship of Commander Winfield Scott Schley. Blockade the port, destroyed the Spanish fleet of Admiral Cervera, attempting to escape.

Admiral Sampson
U.S.S. "NEW YORK", "GLAUCOSTER"
"INIANA", "VIRGIN"
"OREGON", "ERICSSON"
"OWA", "ISST"
"TEXAS", "HARVARD"
"BROOKLYN", "RESOLUTE"

Admiral Cervera
"INFANTE MARIA TERESA", "Plac.", burned, beached, VISCAYA, burned, beached.
"CRISTOBAL COLON", sunk, surrendered.
"ALMIRANTE OQUENDO", burned, beached.
"PLUTON", beached, sunk.
"PURGE", beached, sunk.
"SANTA TERESA", beached.
July 8, 1898, the battleship U.S.S. "TEXAS" and "MASSACHUSETTS" sunk the "REINA MARCELA".
John Rodgers Chapter 36, U.S.C.Z. Honolulu.

582

Mr. M.A. Sanders,
Route 1, Box 546-A,
Stockton, Calif.

Post card - Tarjeta Postal.

Union postale Universelle.

578



Mrs. Alice Snyder
Racine

570



Navy Savings Bank
83 Sands St
Brooklyn
N.Y.

581



1



3



11



14



4



7



9



15



16



17



18



20

43



23



27



28



32



34



37



33



35



44



45



46



47



48



53



51



52



55



59



66



67



57



68



58



72



73



75



76



77



82



84



83



89



85



87



88



90



94



95



96



97



98



102



92



93



105



101



107



108



110



112



111



113



114



109



115



116



117



118



104



145



126



127



132



134



135



136



137



138



139



140



142



143



144



146



147



141



148



149



150



151



152



154



156



160



170



171



161



164



173



162



179



180



181



208



209



182



184



200



203



207



199



204



212



213



201



215



217



218



224



225



222



223



226



227



231



232



233



234



235



236



237



242



275



282



141008

256



254



141006

251



141096



276

162162



283



239



286



289



292



293



294



296



300



301



303



308



309



310



313



314



315



322



325



316



317



317



326



328



330



331



332



333



334



335



341



342



349



358



357



367



374



375



376



377



380



372



378



382



384



387



388



385



390



395



392



407



398



416



417



418



419

BELLE REEVES
SECRETARY OF STATE
RECEIVED
AUG 6 1943
U.S. DEPT. OF STATE
SECRETARY OF STATE OF Washington

FREE
(Official War Ballot)

THIS WAR VOTER'S APPLICATION HAS BEEN CHECKED WITH THE PERMANENT REGISTRATION RECORDS AND I REQUEST YOU THAT:

APPLICANT IS NOT REGISTERED

APPLICANT IS REGISTERED AND PROPER NOTATION HAS BEEN MADE ON SAID VOTING RECORD.

YAKIMA CITY CLERK by *[Signature]*

PASSED BY
U 00373 S
ARMY EXAMINER
[Signature]

Olympia (City)
Washington (State)

CANAL ZONE

574

Terms of Sale

1. All bids are per lot as numbered in the catalog. The right is reserved to withdraw any lot prior to sale and to group two or more lots.
2. All lots are sold without reserve to the highest bidder at one bid advance over the second highest bid. "BUY" bids are respectfully declined. "OR" bids are welcome. The right is reserved to reject bids made in bad faith.
3. Title shall remain with the CZSG Mail Sale Manager until lots are paid in full.
4. Each lot has been examined by a competent authority and is sold as genuine. If, however, in the opinion of a mutually acceptable authority the lot is declared otherwise, the purchase price will be refunded in full provided that the notification is received by the CZSG Mail Sale Manager within 30 days of the closing of the Sale.
5. Claims for errors in descriptions must be made within seven days of receipt of lots. Any lot for which the description is incorrect must be returned intact in the condition received. None of the following are returnable: lots containing more than ten stamps, stamps described as defective or faulty and lots offered "AS IS".
6. On request, additional information or images can be provided by mail or email. Please send a SASE with mail requests.
7. Successful bidders are expected to pay in full within seven days of receipt of the invoice.
8. The placing of a bid constitutes acceptance of the above terms.
9. All bids and correspondence should be addressed to:

Tom Brougham, CZSG Mail Sale Manager
P. O. Box 1284, Berkeley, CA 94701 or
tombrougham@yahoo.com (510) 843-2459

Symbols and Abbreviation Used in this Catalog

* – unused; o – used; Blk – block; C – cover; LC – large cover; OG – original gum; TG – tropical gum; NH – never hinged; LH – lightly hinged, HM – hinge mark; HR – hinge remnant; DG – disturbed gum; pr – pair; BkPn – booklet pane; BKLT – complete unexploded booklet; cntr – centered/centering; cr – crease; CDS – circular date stamp; reg – registered; bkstp – backstamp; hs – handstamp; lt - light/lightly; tr – tear; dam – damaged; o/w – otherwise; pp – pulled perf; bp – blunt perf; spc – spacing; scr – scrape; T – top; B – bottom; R – right; L – left; 5B6 – 5 blocks of 6 stamps each; CA – cachet; NC – no cachet; UA – unaddressed; AD – addressed; pn – penciled notation; wr – wrinkles; ppc – picture postcard.

Catalogs Used in Pricing and Descriptions

2006 Scott U. S. Specialized; 2003 UPSS Postal Stationery Cat.; AAMC 5th Ed. 1981; Entwistle "Catalog of Cristobal Precancels" 1987; Entwistle "Postal Markings of the Canal Zone" 2nd Ed. 1992; Finder "Philatelic Announcement Cards..." 1997; Plass, Brewster & Salz "Canal Zone Stamps" 1986.

AUCTION CATALOGUE

This entire catalog with color illustrations is available at CZSG.org. Last year's complete catalog with prices realized is also posted there. After this Sale, its prices realized will be posted there too.

Table of Contents

| | | | |
|--------------------------|---|---------------------------|----|
| Definitive Stamps | 1 | Revenues | 10 |
| Air Post Stamps | 5 | Postal Stationery | 10 |
| Postage Due Stamps | 5 | Postal Stationery Cards | 11 |
| Plate No Blocks/Singles | 6 | First Day Covers | 11 |
| Large Stamp Lots | 7 | First Flight Covers | 12 |
| Perfin Stamps | 7 | Special Event Covers | 12 |
| Official Perf P Stamps | 7 | Covers | 12 |
| Official Air Post Stamps | 8 | APO & Navy Covers | 14 |
| Official Ordinary Stamps | 8 | Other Covers & Phil Items | 14 |
| Post Office Seals | 8 | Philatelic Lit & Catalogs | 15 |
| Proofs & Specimens | 8 | Picture Post Cards | 15 |
| Precancelled Stamps | 9 | CZ Memorabilia | 15 |

| Lot No. | Description | Estimate | Sl.Prc. |
|--------------------------|--|----------|---------|
| DEFINITIVE STAMPS | | | |
| 1pa | 1 pair w/ Panama reading down, pos 89 invert N & pos 90 invert V for A, cert says NG but may have gum traces, R stamp sm tear B & blunt perf T, centered to T & L, PF cert for strip of 4, Ph | 1,100.00 | 190.00 |
| 2 | 1 Panama reading down, VF, APS cert, Front Ph | 425.00 | 380.00 |
| 3st | 2 strip of 4 tied to sm piece of wrapper, SE at B (pos 97 - 100), toned, sp on pos 97, F+, APS cert, Ph | 700.00 | 440.00 |
| 4 | 3, TG, HM, clean & fresh, F-VF+, APS cert, Ph | 350.00 | 260.00 |
| 5 | 3, lt cancel, well-centered, clean & fresh, pn initials BWB rev, APS cert, Front Ph | 250.00 | 190.00 |
| 6 | 4 w bottom half of A2 & M missing, OG, heavy HM, F-VF | 35.00 | 15.00 |
| 7 | 4 pinkish K-1 cancel, lg margins, VF, Ph | 22.50 | |
| 8 | 4 w/ pl #2061, lt cancel, fresh & sound but perfs just cut at R | 22.50 | 21.00 |
| 9 | 5, fresh OG, sm HR, lg & even margins, tiny light nat inclusion R, beautiful & VF+, Ph | 30.00 | 8.50 |
| 10 | 5 w/ pl #2221 B, not in Durland or CZSG list, Napp's says # "sent to press but unreported", horiz cr barely visible front, dist TG, HM, new find!, Front Ph | 250.00 | 440.00 |
| 11 | 5 w/ pl # 2076 B, OG, HR, fresh, F-VF+ | 30.00 | 36.00 |
| 12 | 5 w/ full arrow & guideline B & R, OG, HR, F-VF | 30.00 | 20.00 |
| 13 | 5 w/ red postmark, SE at R, blunt perf LL, lg margins, fresh, F+ | 25.00 | 14.00 |
| 14 | 6 w/ pl #1886 B, OG, HM, fresh, blunt perf LR, F+, Ph | 110.00 | 80.00 |
| 15 | 6, lt cancelled in magenta, blunt perf T, o/w F-VF+, Ph | 65.00 | 34.00 |
| 162 | 6 two unusual position items: 1) SE guideline LEFT, strong perfs, F-VF, 2) SE guideline T&R, lg thin, lt cancel, F+ appearance, Ph | 130.00 | 76.00 |
| 17 | 8, OG, HM, F-VF, Ph | 150.00 | 100.00 |
| 18 | 8, OG, lt HM, lt gum crease, F-VF, Ph | 150.00 | 76.00 |
| 193 | 9 three copies w/ diff color cancels: 1) SON bright blue Ped Mig Hs-1 11/28/190_, tr UR, 2) red killer, F-VF, 3) purple killer F-VF+ | 10.00 | 13.00 |
| 20B4 | 9b ZONE antique LL in blk w/ normal, deep diagonal bend on var not visible from front, dried up OG, sm discolored spot on B perf of var, F+ appearance, Ph | 70.00 | 21.00 |
| 217 | 9-10 normal & 1¢ w/CANAL, 2¢ spaced A-L, 2¢(2) w/ broken letters, gen lt cancels, F-VF | 10.00 | |
| 222B | 9-10 used blks, lt cancels, centered F, minor perf faults but nice looking | 30.00 | 21.00 |
| 23 | 10 'C' missing from op shift (10th column so no 'C' at R), OG sm HM, F-VF, Ph | 20.00 | 64.00 |
| 24 | 10 split op (C of CANAL at R), OG, NH, F-VF | 20.00 | 25.00 |
| 25 | 10a inverted op. glazed OG w/ some lt toning, face w/ v lt even toning, strong perfs, F-VF, Front Ph | 225.00 | 70.00 |
| 26 | 11 dk green op nice OG sm HM fresh F-VF | 7.50 | |

| Lot No. | Description | Estimate | Sl.Prc. |
|--------------------------|---|----------|----------|
| DEFINITIVE STAMPS | | | |
| 27 | 11b inverted op w/ bar B, OG, lightest touch of trop, o/w NH, perf cut T, HM & pn on rt selvage, PF cert, Ph | 475.00 | 270.00 |
| 28 | 12 PAMANA reading up (12.7), lt cancel, blunt perf LL, F-VF, Ph | 70.00 | |
| 29 | 12 dk carm op w/ antique N & broken C (12.Fb.2, pos 65), well centered, lt cancel, 2 blunt perfs, F-VF | 12.00 | 16.00 |
| 30 | 12 3-PANAMAs op shift (12.26), sm tr B not easily seen front, o/w F, APS cert | 10.00 | |
| 31sh | 12, 12a, 12b and varieties: almost complete pane (pos 100 missing) of Stage VI CZ op on dk carmine Panam op (top pane w/ bottom SE and inscrip L & R). Also includes PAMANA reading up (2), antiques L & Z, Z, N, double-lined N (2), creases affect UL block 12; rears pos 12 & 81, some hinging esp of selvage, slight TG, F-VF centering throughout. | 250.00 | 170.00 |
| 32pa | 12b ZONE antique in pair w/ normal, TG, apparently NH, F-VF, Ph | 75.00 | 23.00 |
| 33B4 | 13 dk carmine L margin block (13.E), beautiful OG, NH, fresh, F-VF+, Ph | 110.00 | 62.00 |
| 34 | 13 w/ R Panama 5mm below bar, OG, heavy HM, several perf tips toned, F, Ph | 150.00 | 34.00 |
| 35B6 | 13 used blk of 6 of dk carmine Stage IV (13.Ea) (pos 53-55, 63-65), w/ purple hs "PASSED/ FREE OF DUTY/N.Y.P.O./I.W.C.", several creases & some blunt perfs, nice appearance, unusual, Ph | 62.50 | 48.00 |
| 36 | 15 w/ Type B "8", OG, paper fragments rev, HM, perfs strong, fresh face, F-VF, APS cert, Front Ph | 2,600.00 | 1,350.00 |
| 37 | 15 w/ Type B '8' (pos 48) CZSG 15.4, lightly trop OG, NH, fresh, blunt perf T & LL corner, v lt handstamped initials on rev, F-VF, PSE cert for block, Ph | 2,600.00 | 1,250.00 |
| 38B4 | 16a.A block from top half of sheet (pos 3-4 & 13-14), dried up TG, o/w fresh, LL stamp unlisted 3rd A dropped in R Panama, F-VF | 9.00 | 8.00 |
| 39B1 | 16b blk of 10 (pos 41-45 & 51-55) w/ 2 narrow spacings of "1 cts" and one inverted N (16b.5 & .6), dried TG, no apparent hinging, ragged perfs T, o/w F-VF | 25.00 | 16.00 |
| 40B6 | 16b block (pos 88-90 & 98-100) w/ LR stamp CANAL 13.25mm (16b.4), dried up gum, o/w fresh, F-VF | 14.50 | 11.00 |
| 41B4 | 17a blk LR stamp dropped A (17a.7, pos 82) dried gum, no sign of hinging, F-VF | 14.00 | 13.00 |
| 42 | 17b w/ spaced Z-O, dried up gum, HM, fresh, F-VF | 20.00 | 16.00 |
| 43B4 | 17b block (pos 23-24 & 33-34 OR 73-74 & 83-84), dried up gum, F-VF, Ph | 90.00 | 18.00 |
| 44 | 18, OG, HR, F-VF, Ph | 55.00 | 56.00 |
| 45pa | 18b Panama down in pair with normal (18b.2), due to slight shift long Panama (.1b) shows R, nice OG, lt HR, fresh, F-VF, Ph | 175.00 | 80.00 |
| 46 | 19 HR, dried gum, o/w fresh, strong perfs, nice centering, VF, Ph | 55.00 | 56.00 |
| 47pa | 19a CANAL antique in pair w/ normal, dried TG, lt HM, Panama op shifted, VF+, Ph | 265.00 | 190.00 |
| 48 | 19d PANAMA up and down, dried TG, o/w NH, F-VF, Ph | 110.00 | 60.00 |
| 49 | 19 var w/o CZ op ("printers waste"), TG, HR, one pp LL, o/w F-VF | 30.00 | |
| 50 | 20, TG, HM, fresh, F+ | 45.00 | 22.00 |
| 51B4 | 20a antique CANAL (LL) in blk w/ normal, lightly TG, LH, VF, Ph | 335.00 | 160.00 |
| 52B4 | 20b antique ZONE (UL) in blk w/ normal, TG, T two LH, B two NH, F-VF, Ph | 335.00 | 145.00 |
| 53 | 20c 8 cts missing w/arrow on selvage (pos 100, SE at B, deep thin & sm hole B, well-centered, very dried TG, only 50 issued, Ph | 800.00 | |
| 54 | 21, OG, HR, F-VF | 25.00 | |
| 55pa | 21 pair w/ inscript B, 1) R stamp: OG, NH, F-VF, 2) L stamp DG, NH, F-VF+, Ph | 50.00 | 52.00 |
| 56B8 | 22 (7.2mm spacing, hard paper) bottom inscript blk of 8, dried gum, NH, F-VF, | 20.00 | 32.00 |
| 57B4 | 22 (7.2mm spacing, soft paper) B inscript blk, OG, NH, VF, Ph | 10.00 | 25.00 |
| 58pa | 22 w/ 'ONE' w/ normal, lt trop NH OG, sm toned spot rev of var, F-VF+, Ph | 80.00 | 24.00 |
| 59 | 22e double op on 6.8mm printing, NG, F-VF+ , Ph | 275.00 | 210.00 |
| 60 | 23 SON Ancon Sta A, Mar 27, F+ | 8.00 | 6.00 |
| 61 | 27 spaced C-A, OG, NH, fresh, F-VF | 12.50 | 11.00 |
| 62 | 26 7.2mm spacing, lt cancel, F-VF+ | 8.00 | 3.50 |
| 63 | 27, OG, lt HM, fresh, F-VF | 12.50 | 9.50 |
| 64 | 28, dried up gum but fresh, strong perfs, F-VF | 45.00 | 17.00 |
| 65 | 29 spaced C-A, OG, NH but shallow thinning, fresh, strong perfs, centered F+ | 40.00 | 16.00 |
| 66 | 30, OG w/ lightest trop gum, NH, fresh, F-VF, Ph | 40.00 | 19.00 |
| 67B4 | 30 blk w/ spaced C-A (UR), OG, very LH upper stamps, lower NH, EF, Ph | 200.00 | 180.00 |
| 68 | 31c handmade booklet pane, fresh OG, NH, 'natural' blunted perfs along L and 'SE' along B from separation of booklets, F+, Ph | 575.00 | |
| 69pa | 32 pair from 9.2mm spacing printing, L stamp w/ 10mm spacing, a bit toned, centered to B | 7.00 | 12.00 |
| 70pa | 32a vert pr imperf horiz, v slightly trop OG, v fresh, HM, VF, PF cert, Front Ph | 1,000.00 | 800.00 |

| Lot No. | Description | Estimate | Sl.Prc. |
|--------------------------|--|----------|----------|
| DEFINITIVE STAMPS | | | |
| 71 | 35, v lt red postmark, one blunt perf B, F+ | 20.00 | 16.00 |
| 72 | 36b 10 cts omitted, TG, HR, F-VF, PSE cert for blk, Ph | 325.00 | 250.00 |
| 73 | 37, OG, HR, fresh, F-VF, Ph | 55.00 | |
| 74B4 | 39 used blk w/ 2 strikes of Paraiso Hs-11, B pair horiz crease, F-VF appearance | 8.00 | 8.00 |
| 75 | 39d op inverted on vermillion shade, OG, NH, fresh, VF+, Ph | 175.00 | 130.00 |
| 76 | 39d op reading down, OG, NH, F+, Ph | 175.00 | 85.00 |
| 77 | 39e inverted center & op, mildly trop OG, HM, perfs cut L, Ph | 600.00 | |
| 78 | 40 9.2mm spacing, OG, HR, fresh, F+ | 22.50 | |
| 794 | 42-45, OG, NH, fresh, each centered F | 52.00 | 42.00 |
| 80 | 43 w/ 10mm op spacing (43.3), centered L, a few wrinkles, F | 18.00 | 22.00 |
| 81 | 45, lt TG, sm HR, fresh, F-VF+ | 22.50 | 21.00 |
| 82 | 46 1st prt, OG, cert says hinged but undetectable to us, VF, 2 PF certs, Ph | 160.00 | 125.00 |
| 83 | 46 1st prt, fresh OG, NH, F, Ph | 160.00 | 50.00 |
| 84 | 46a op reading down, TG, rounded corner LL, no hinging visible, F, PSE cert, Ph | 375.00 | |
| 85 | 46b double op, TG, NH, blunt perfs BR, F+, Ph | 350.00 | |
| 86 | 47, full v slightly toned OG, v light HM, one blunt perf B, tiny lt purple ink speck on frame line near R '2', fresh, three big balanced margins, perfs into B inscript but clear of frame, much better than most mint #47s, F+, Front Ph | 3,250.00 | |
| 87 | 47 w/ dot in middle of O of ZONE (appears to be same ink as op), 'chewed' corner UR, perfs cut B, Ph | 100.00 | |
| 88 | 47, sm & lt edge wear UL, o/w sound & clean, centered F, Ph | 100.00 | 25.00 |
| 89 | 48 1st prt, v lt trop OG, NH, F-VF, PSE cert, Ph | 500.00 | 380.00 |
| 90 | 48 1st prt, dist TG, HR, F+, Ph | 100.00 | 115.00 |
| 91 | 49, segmented cork cancel LL, lg margins, F-VF | 5.50 | 6.50 |
| 92 | 50, TG, HM, one blunt perf B, F+, Ph | 55.00 | 22.00 |
| 93 | 51, v lightly trop OG, v lt HM, lt pn mark rev, fresh, F+, Ph | 45.00 | 22.00 |
| 94 | 52a, OG, NH, VF, Ph | 175.00 | 140.00 |
| 95 | 52a, OG w/ trivial glazed area, o/w NH, fresh, F-VF+, Ph | 175.00 | |
| 96 | 54, fresh OG, NH, F-VF, Ph | 150.00 | |
| 97 | 54, pristine OG, NH, blunt perfs B & T, o/w F-VF+, Ph | 150.00 | |
| 98 | 54, even margins, lt & neat postmark, VF. Ph | 35.00 | 28.00 |
| 99 | 54, neat cancel, one blunt perf T, o/w VF | 35.00 | |
| 100 | 55, fresh OG, NH, F-VF | 22.50 | 23.00 |
| 101Bk | 55e booklet pane w/o tab, tissue adhering to part, sm light crease to tip of LR corner, fresh & well centered, F+, Scott \$1750, Ph | 400.00 | 260.00 |
| 102 | 56b double op one inverted, DG, HM, a few blunt perfs, F, Ph | 650.00 | 360.00 |
| 103 | 57, v. slightly TG, NH, fresh, VF, Front Ph | 300.00 | 340.00 |
| 104B4 | 58 block, DG from multiple hinging, HMs on each stamp, fresh & bright on face, well centered, F-VF, PSE cert, Ph | 1,375.00 | 900.00 |
| 105 | 59, nice OG, HM, F-VF, Ph | 175.00 | 170.00 |
| 106 | 60a CANAL double, lightly trop OG, HM, fresh, well centered, blue oval handstamp on rev, EF, PF cert, Front Ph | 2,500.00 | 2,250.00 |
| 107 | 61a inverted op, lightly trop gum, fresh, one slightly blunt perf R, o/w VF, Ph | 200.00 | |
| 108 | 61a inverted op, TG, HM, sm handstamped initials rev, blunt pert UL, F, Ph | 200.00 | 85.00 |
| 109B4 | 61 UR order #F-6785 block, OG, some separation which has been reinforced by two hinges, fresh, F-VF, Ph | 15.00 | 17.00 |
| 110 | 62a inverted op, dried TG, o/w NH, F+, Ph | 60.00 | 30.00 |
| 111 | 63a, lightly tropicalized OG, no indication of hinging, fresh, VF, Ph | 90.00 | 50.00 |
| 112 | 65, OG, HR, F-VF, Ph | 70.00 | 46.00 |
| 113 | 66, lightly tropicalized OG, HM, F-VF+, Ph | 150.00 | 120.00 |
| 114 | 66, OG, HRs, fresh, F-VF, Ph | 150.00 | |
| 115 | 67, lt dist OG, o/w NH, fresh, F, Ph | 500.00 | 210.00 |
| 116 | 67, TG, HM, sm tear TL, F+ centering, Ph | 500.00 | 125.00 |
| 117 | 67, lt cancel at B only, blunt perfs T, o/w F+, Ph | 200.00 | 170.00 |
| 118 | 67, two blunt perfs R, o/w F-VF, Ph | 200.00 | 135.00 |
| 119B4 | 69, OG, couple of gum skips, NH, fresh, VF | 35.00 | 8.50 |
| 1207 | 70-73, both prt'gs for all exc 72, each VF exc 73.B F+, 71-72 NH, rest TG or HM | 25.00 | 18.00 |
| 1219 | 70-74, 2 of each exc 5¢, all printings & two shades of 71, lt cancels, F-VF | 17.80 | 17.00 |
| 122B6 | 71b ZONE inverted in blk w/ normal, SE as always, tissues remnants over much of rev but do not protrude edges, fresh, F-VF, Ph | 350.00 | 170.00 |

| Lot No. | Description | Estimate | Sl.Prc. |
|--------------------------|---|----------|----------|
| DEFINITIVE STAMPS | | | |
| 123pa | 71c & 71d in vert pair (CANAL only & ZONE CANAL), heavy TG, HR in selvedge, o/w NH, strong perfs, fresh, centered to R as usual, F+, PF cert, Front Ph | 2,250.00 | 1,850.00 |
| 124 | 72 w/ huge workup across middle of stamp, HR, F+ | 15.00 | 16.00 |
| 125st | 73.3, op on left stamp 1mm below others (73.3 2nd prt), a few blunt perfs, F | 18.00 | 8.50 |
| 126 | 74, lt TG, o/w NH, fresh, nicely centered, VF+, Ph | 19.00 | |
| 127 | 74, OG, HR, strong perfs, fresh, VF+, Ph | 19.00 | |
| 128 | 75, dried TG, blunt perf UR, fresh, well centered, F-VF | 45.00 | 13.00 |
| 129 | 75 w/ 2 partial Ft Clayton DC, mild (pre-printing?) wrinkling LL corner, o/w F-VF | 25.00 | |
| 130 | 76 1st prt clean-cut op (76.A) DG, perf crease, well centered, F-VF | 35.00 | 11.00 |
| 131 | 76 2nd prt worn op (76.B), OG, HM, well centered, F-VF | 35.00 | 26.00 |
| 132 | 76 1st prt (76.A), face-free cancel, VF, Ph | 32.50 | 30.00 |
| 133 | 76 2nd prt (76.B), moderate cancel, fresh, F-VF+ | 32.50 | 21.00 |
| 134 | 77, OG, lt HM, fresh, VF, Ph | 30.00 | 15.00 |
| 135 | 77, lt cancel, VF, Ph | 22.50 | 27.00 |
| 136 | 78 1st prt, OG, NH, VF, Ph | 75.00 | 68.00 |
| 137 | 78 1st prt, v lt trop OG, HM, big margins, VF, Ph | 50.00 | 32.00 |
| 138 | 78 2nd prt worn/gray op (78.B), OG, sm HR, fresh, F-VF, Ph | 50.00 | 21.00 |
| 139 | 78 1st prt (78.A) w/ full guideline on SE L & B, v. lt cancel, VF, Ph | 37.50 | 32.00 |
| 140 | 78 1st prt (78.A), heavy but neat cancel, F-VF, Ph | 37.50 | 16.00 |
| 141 | 78 2nd prt (78.B), fresh, F-VF, Ph | 37.50 | |
| 142 | 79, OG, lt HM, fresh, VF+, Ph | 35.00 | 18.00 |
| 143 | 79, OG, lt HM, fresh, VF, Ph | 35.00 | 18.00 |
| 144 | 79, lt cancel, F-VF, Ph | 22.50 | 21.00 |
| 145B4 | 79, OG, NH, fresh, F-VF, Ph | 210.00 | |
| 146 | 80 1st prt (red lilac, clean-cut op, 80.A), OG, HR, fresh, VF, Ph | 77.50 | 56.00 |
| 147 | 80 2nd prt (lilac, worn op, 80.B), OG, NH, fresh, F-VF+, Ph | 115.00 | |
| 148 | 80 2nd prt, OG, NH, v lt toned, F-VF, Ph | 115.00 | |
| 149 | 80 1st prt (9.2mm spacing, 80.A), lt cork cancel, lt cr visible rev only, o/w F-VF, Ph | 45.00 | 26.00 |
| 150 | 80 2nd prt (80.B), moderate target cancel, F-VF, Ph | 45.00 | 38.00 |
| 151 | 81, slightly hazy OG, sm HR, F-VF+, Ph | 225.00 | |
| 152 | 81, lt cancel, F-VF, Ph | 95.00 | 74.00 |
| 153 | 85, OG lightest possible touch on gum, o/w NH, fresh, VF | 6.00 | 5.50 |
| 154pa | 86b CANAL inverted w/ normal, SE as always, OG, HM, fresh, VF, PF cert, Ph | 950.00 | 675.00 |
| 155 | 86 ZONE wrong font, OG, HM, pre-printing paper cr barely visible LL, F, Front Ph | 250.00 | 160.00 |
| 156 | 87, TG, o/w NH, fresh, VF, Ph | 35.00 | |
| 157 | 87, OG, large HM, F-VF+ | 35.00 | 11.00 |
| 158 | 89, v lt trop OG, fresh, NH, F+ | 42.50 | 25.00 |
| 159 | 93, OG, NH, F+ | 5.75 | |
| 160 | 97, OG, lt HM, F-VF, Ph | 42.00 | 24.00 |
| 161B4 | 97 block, perfect NH gum, nice centering for this difficult issue, VF, Ph | 175.00 | 130.00 |
| 162Bk | 101a booklet pane, OG, NH, fresh, VF, Ph | 160.00 | 115.00 |
| 163 | 104 Z under C, lt cancel, F-VF+ | 10.00 | 11.00 |
| 164 | 105 LL blk w/ siderographer initials, dry prt w/ shiny gum, OG, NH, VF, Ph | 3.00 | 4.50 |
| 165Bk | 106a booklet pane w/ guideline B, OG, HR, F-VF+ | 15.00 | 9.00 |
| 166Bk | 117a booklet pane w/ guideline B, OG, HM, F-VF | 45.00 | 12.00 |
| 167Bk | 117a complete booklet, minor cover bends at staples, panes VF | 120.00 | 62.00 |
| 168Bk | 117b complete handmade booklet, 2 NH panes, one w/ nat SE at T, both F-VF, cover bent moderately at staples, F+ | 320.00 | 125.00 |
| 169B4 | 123 used blk, clear Balboa RI-1, F-VF | 5.00 | 3.50 |
| 170 | 127, OG, NH, lg margins, VF, Ph | 3.50 | |
| 171 | 130, OG, NH, lg margins, VF+, Ph | 8.00 | 9.00 |
| 1726p | 153-55 & 160-62 joint line pairs, 25¢ thinned, o/w F-VF, rest OG, NH & F-VF+ | 29.45 | |
| 1732 | 154 joint line pair (HM, VF) plus coil roll label for 100 4¢ (wrinkled), Ph | 5.00 | 8.50 |
| 1743p | 160-162 coil pairs, OG, NH, VF | 7.30 | 3.50 |
| 175pa | 162 pair, OG, NH, VF | 5.50 | |
| 176Bk | 163 a w/ full offset of design on rev, pre-printing paper wrinkle, o/w F-VF | 10.00 | 52.00 |
| 1773 | 163a 3 complete unstapled booklets w/ the three types of tabs, sm corner bump on 3 panes w/ the sm blue bar on tabs, o/w VF | 45.00 | 17.00 |

AIR POST STAMPS

178 C1 OG HM fresh F-VF 8.00

| Lot No. | Description | Estimate | Sl.Prc. |
|---------------------------|---|----------|---------|
| AIR POST STAMPS | | | |
| 179 | C2, pretty OG, NH, F-VF, Ph | 120.00 | |
| 180 | C2, F-VF, Ph | 52.50 | 50.00 |
| 181 | C2, F+, Ph | 52.50 | |
| 182 | C4, fresh OG, v LH, VF+, Ph | 8.00 | |
| 1839 | C6-C14, OG, HR, F-VF | 22.35 | |
| 184 | C5a dropped 2 (pos 6), SE at T, lt cancel, F+, Ph | 60.00 | 25.00 |
| 1853B | C15-C17 blocks, OG, NH (sm gum skips on 10¢), every stamp well centered, VF | 47.00 | 16.00 |
| 18633 | C21-C53, OG, NH, nearly all VF | 59.00 | 7.50 |
| 187sh | C45 LR pane of pl #168775/168781, pn # in selvage of pl # blk, OG, NH, F-VF | 27.50 | |
| 188sh | C46 UR pane of pl #168775/168784, OG, NH, VF | 40.00 | 16.00 |
| 189sh | C47 UL pane of pl #168773/168789, OG, NH, VF | 100.00 | |
| 190sh | C48 LR pane of pl #168775/170214, OG, NH, VF | 12.50 | 4.50 |
| 191sh | C49 LR pane of pl #168775/171626, OG, NH, VF | 12.50 | 4.50 |
| 192Bk | C49a complete booklet w/ long black bars on tabs, F-VF | 17.50 | |
| 1933B | C49a 3 complete booklets w/ each of the tab markings (no plain tab), F-VF | 52.50 | 18.00 |
| 194Bk | C49a booklet pane w/ lg black bar on tab, OG, NH, F-VF | 6.00 | |
| 1952B | C50a 2 complete booklets: plain tab & lg black tab, VF | 60.00 | 36.00 |
| 196sh | C51 (flat gum) UR pane of pl #168773/173008, OG, NH, VF | 37.50 | 34.00 |
| 197sh | C52 UL pane of pl #168775/170203, OG, NH, F-VF | 30.00 | |
| 198sh | C53 (flat gum) LL pane of pl #168773/173010, OG, NH, VF | 45.00 | 42.00 |
| POSTAGE DUE STAMPS | | | |
| 199 | Like Bliss Provisional PrPD-2 but on #10, lg even margins, like Type B in CZSG Stamps Checklist, (see page 110 of Entwistle's Postal Markings), VF, Ph | 30.00 | |
| 200 | J1, slightly tropicalized gum, NH, fresh, VF, Ph | 85.00 | 62.00 |
| 201B4 | J1 used block w/ 3mm horiz spacing, F+, Ph | 80.00 | 38.00 |
| 202 | J1, F-VF | 15.00 | 8.50 |
| 203 | J1, OG, HR, F-VF, Ph | 85.00 | 40.00 |
| 204 | J2 w/ siderographer initials D.H. S. in selvage, VF+, Ph | 42.50 | 54.00 |
| 205 | J3, OG, HR, strong perfs, sm balanced margins T & B, fresh, F-VF, Front Ph | 1,000.00 | 500.00 |
| 206 | J3, F-VF | 40.00 | 30.00 |
| 207 | J2, TG but no indication of hinging, fresh, strong perfs, F-VF, Ph | 250.00 | 190.00 |
| 208 | J5, OG, HM, fresh, VF+, Ph | 225.00 | 160.00 |
| 209 | J5, extremely lightly trop OG, NH, F+, Ph | 225.00 | 160.00 |
| 210 | J10, NG, nice centering, a few toned areas rev, o/w VF | 30.00 | 21.00 |
| 211 | J11, TG, no indication of hinging, F | 35.00 | 30.00 |
| 212 | J12, OG, HR, F-VF, Ph | 100.00 | 46.00 |
| 213 | J12, NG, fresh, F+, Ph | 100.00 | 42.00 |
| 214 | J13, F-VF+ | 10.00 | 11.00 |
| 215 | J13, OG, HR, VF, Ph | 55.00 | 26.00 |
| 216 | J14, OG, HR, F+, Front Ph | 225.00 | 105.00 |
| 217 | J14, fresh, F-VF, Ph | 50.00 | 36.00 |
| 218 | J15, lt dist gum, HM, F-VF, Ph | 90.00 | 52.00 |
| 2193 | J15-J17, all w/ lt cancels, 2¢ F, 1¢ F+, 10¢ F-VF | 31.00 | 11.00 |
| 2203 | J15-J17, moderate cancels, very well centered, strong perfs, VF | 31.00 | 14.00 |
| 221 | J16, OG, lg gum skip, NH, fresh, F-VF | 22.50 | 11.00 |
| 222 | J16 (2 singles) w/ plate finishers' initials R: 1) JAC JWG, 2) J McF JMB, F-VF, Ph | 15.00 | 34.00 |
| 223 | J16 w/ raised op - POSTAGE above CANAL, DG, HM, F-VF, Ph | 22.50 | 26.00 |
| 224 | J17, lt TG, HM, fresh, VF, Ph | 50.00 | |
| 225 | J17a POSTAGE DUE double, OG lt dist from interleaving, red STOLOW hs guarantee & red ink on gum but no bleedthrough, centered to B as usual, F+, Ph | 800.00 | 375.00 |
| 226pa | J17b E omitted in pair w/ normal, glazed TG but apparently NH, perfs cut L and touch B, strong perfs, fresh, Ph | 750.00 | 340.00 |
| 227 | J17b E omitted, TG, two sm thins, centered F+ for this, nice appearance, Ph | 750.00 | 200.00 |
| 228 | J18 clean-cut op 9mm spacing, OG, NH, F+ | 8.00 | 2.00 |
| 2292 | J18 both prt: 1) 9mm spacing, OG, NH, F-VF+, 2) 11mm spacing, OG, HR, VF | 16.00 | 8.50 |
| 2303 | J18-J19: 1) 1¢ worn op 11mm spacing, F-VF, 2) 2¢ both spacings (J19.A & .B), each F-VF+ | 11.00 | 11.00 |
| 2313 | J18-J20 all 2nd prt, lg margins & well centered, 1¢ & 2¢ lt cancels, 10¢ cancelled w/ lg Z, each VF, Ph | 27.00 | |
| 232 | J19 clean-cut op (J19.A) OG HM VF Ph | 15.00 | 7.50 |

| Lot No. | Description | Estimate | Sl.Prc. |
|--|--|----------|---------|
| POSTAGE DUE STAMPS | | | |
| 233 | J19 worn op (J19.B), OG, HM, VF, Ph | 15.00 | 9.50 |
| 234 | J20 clean-cut op (J20.A), slightly dried gum, HM, fresh, VF, Ph | 150.00 | |
| 235 | J20 worn op (20.B), fresh OG, HM, centered to R, F, Ph | 150.00 | |
| 236 | J20 clean-cut op (J20.A), VF, Ph | 20.00 | 17.00 |
| 237 | J20 worn op (J20.B), VF+, Ph | 20.00 | 19.00 |
| 238 | J20 clean-cut op, OG, NH, VF+, PF cert, Front Ph | 150.00 | 340.00 |
| 239 | J23 w/ 1.5mm gap in flag of '5', dried up TG, F, Ph | 10.00 | 13.00 |
| PLATE NUMBER BLOCKS & SINGLES | | | |
| Also see lots 8, 10, 11, 14 & 109 | | | |
| 240B1 | 70 2nd prt used pl # 17080 R block of 12 (4 across by 3 down), moderate cancels, well centered, F-VF | 15.00 | 19.00 |
| 241B6 | 71 2nd prt pl #16556 R, OG, NH, fresh, F-VF | 30.00 | 28.00 |
| 242B6 | 91 (1st prt 9mm spacing) pl #18022 T, OG, HM in selvedge only, staple hole & bends in selvedge, F, Ph | 190.00 | 170.00 |
| 243 | 93 single 1st prt w/ pl #14436 R, DG, HM, F-VF | 5.75 | 6.50 |
| 244B6 | 111a wet prt pl #123710 T, OG, NH, F-VF | 12.50 | 13.00 |
| 245sh | 117 dull gum UR pane of 100 w/ pl #F129223, w/ part of guide box & punched hole over pos 1, OG, NH, F-VF | 25.00 | 13.00 |
| 246B4 | 118 pl #21885 LL, OG, NH, F-VF | 2.75 | 2.50 |
| 247 | 118 pl #21888 LL, OG, HM, VF | 2.75 | 6.00 |
| 2483B | 119 #22645 UL, #22646 UL & #22646 LL, OG, NH, F-VF+ | 6.75 | 8.50 |
| 2492B | 119 #22645 UL & #22646 UL, OG, NH, F-VF | 4.50 | 4.50 |
| 250B6 | 120 pl #141006 T, OG, hinge on selvedge, usual gum creases, F-VF | 12.50 | 6.00 |
| 251B6 | 120 pl #141006 B, gum skips & minor gum creases, F-VF+, Ph | 12.50 | 16.00 |
| 252B6 | 121 pl #141181 B, NH, minor gum skips in B selvedge, F-VF | 12.50 | 15.00 |
| 253B6 | 122 pl #141501 B, OG, NH, usual gum creases, F-VF | 12.50 | 15.00 |
| 254B6 | 123 pl #141096 B, OG, NH, usual gum creases, F-VF+, Ph | 20.00 | 26.00 |
| 255B6 | 125 pl #141008 B, OG, NH, usual gum creases & minor gum skips, F-VF, Ph | 45.00 | 50.00 |
| 256B6 | 141 pl #159908 B, OG, NH, usual gum crs, gum skips B of selvedge, F-VF | 8.50 | 10.00 |
| 2574B | 142-145 four pl # blocks each w/ full B selvedge, usual gum creases, 3¢ lt HM, 6¢ NH, 12¢ NH, 18¢ HMs, each F-VF | 50.00 | 26.00 |
| 2584B | 163 matched set of #172912, OG, NH, VF | 8.00 | 6.50 |
| 2594B | 165 matched set of #173356, OG, NH, VF | 8.00 | 10.00 |
| 2604B | 165 matched set of #173357, OG, NH, VF | 8.00 | 11.00 |
| 2613 | C3 three pl #115187 singles: L (NH), R (HM) & B (HR), each F-VF | 12.25 | 19.00 |
| 2622 | C4 pl #118121 singles: 1) T, NH, sm toned rev, 2) L, HR w/ DG, fresh, F-VF | 16.00 | 19.00 |
| 263 | C5 single w/ Pl #F115187, OG, NH, fresh, bend on selvedge, o/w VF+ | 7.50 | 8.50 |
| 2646 | C6-C9, C11 & C13 top pl # singles (narrow selvedge), 5¢, 10¢ & 40¢ NH & F-VF, others w/ sm faults | 8.60 | 10.00 |
| 265B6 | C7 pl #123574 B, a bit floppy but fresh, OG, HM, even 1/8" band of shiny gum on front of selvedge edge, F+ | 4.50 | 3.00 |
| 2667 | C7-C12 & C14 B pl # singles, 5¢, 20¢ & \$1 NH, 30¢ thinned, rest HR, F+ | 18.10 | 19.00 |
| 267B6 | C9 red orange pl #123575 B, OG, NH, wide gum skip across B 3 stamps, F-VF | 10.00 | 8.50 |
| 268B6 | C10 blue pl #123576 B, OG, NH, usual gum crs & gum skip along selvedge, F-VF | 11.00 | 8.50 |
| 269B6 | C11 red violet pl #123577 B, OG, NH, usual gum creases, F-VF | 20.00 | 9.00 |
| 270B6 | C11 red violet pl #123577 B, OG, HM on one stamp, minor gum creases, F-VF | 20.00 | 9.00 |
| 271B6 | C13 pl #123578 B, OG, NH, some gum skips, heavy gum creases visible on selvedge, well centered | 32.50 | |
| 2722B | C21a wet prt pl #162159 L & C22a wet prt pl #162151 R, OG, NH, lg gum skips in selvedge of both, F+ | 17.50 | |
| 273B6 | C22a wet prt pl #162151 L, OG, NH, F-VF | 7.50 | 5.00 |
| 2742B | C23 dry prt: 1) #162153 L, HM, 2) #162154 L, NH, 2 diff shades, F-VF | 16.00 | 11.00 |
| 275B6 | C24a wet prt pl #162160 L, OG, NH, 12mm (!) vert band of gum on selvedge, fresh, sliver of ink on very edge of selvedge, F-VF, Ph | 125.00 | 125.00 |
| 276B6 | C26a wet prt pl # 162162 L, lt dist gum & lg gum skip along R, tiny cr in LR selvedge, well centered, Ph | 100.00 | 68.00 |
| 2776B | C36-C41pl # blks, all UR exc 20¢ & 30¢ LR, HR, o/w VF | 53.75 | |
| 2784B | C41 all four pos of pl # blocks, UR & LL are NH, other HM, F-VF+ | 80.00 | |
| 2794B | C50 matched set of #172228/168773, OG, NH, sm indentation on one, F-VF | 19.00 | 13.00 |
| 2804B | C50 matched set of #168773/172229, bend on one, OG, NH, F-VF | 19.00 | 7.00 |

| Lot No. | Description | Estimate | Sl.Prc. |
|--|--|----------|---------|
| PLATE NUMBER BLOCKS & SINGLES | | | |
| 28113 | 13 diff pl #blks: 108 L, 112 L, 117 T, 138 T, 163 UL, 165 LR, C45 UL, C46 UR, C47 LL, C50 UR, C51 UL, C52 UL, C53 UR, all NH, VF | 25.00 | 23.00 |
| LARGE STAMP LOTS | | | |
| 28250 | 50 used blks - 25 diff, mixed condition, incl 34, 40, 51, CO7, F+ group, Ph | 40.00 | 74.00 |
| 28331 | 31 diff CZ postage meters on stickers or cut corners, 4 from 50's & 60's, rest from 70's, numbers 2, 3(2), 13, 20, 21, 25, 26(Bal), 26(HowAFB), 28, 31, 32(2), 40, 41, 43, 51, 54, 57, 58, 60, 65, 70, 71, 72, 81, 83, 85, 87, 89, clean & F-VF group, Ph | 50.00 | 52.00 |
| 28440 | 40 mostly diff mint & used bet 4 & 62 w/ 6 shades of #24, condition varies, mostly Ave or F, Cat value about \$390 | 125.00 | 38.00 |
| PERFIN STAMPS | | | |
| 285 | C7 perfin reading down & rev, perfin clear of cancel, perfs cut T frame, sound, F | 20.00 | 21.00 |
| 286 | C9 perfin reading down, minor blunting of T perfs, o/w VF, Ph | 20.00 | 20.00 |
| 287 | C10 perfin reading up, SE at R, one sp B, o/w F+ | 15.00 | 16.00 |
| 288 | C12 perfin reading across, SE, perfin clear of cancel, bend, sm perf fault, o/w F-VF | 15.00 | 16.00 |
| 289 | C13 perfin reading down, SE right, perfin clear of cancel, VF, Ph | 25.00 | 64.00 |
| 290 | C22 perfin reading up, centered R, sound, F | 15.00 | 17.00 |
| 2912 | 117 two: 1) perfin reading up, SE at R, 2) perfin reading upside down, SE at B, both creased & perf faults but nice appearance | 15.00 | 16.00 |
| 292 | 122 perfin reading up, minor perf creases, o/w F-VF, Ph | 20.00 | 34.00 |
| 293 | 123 perfin reading down, cancel a bit heavy & lt toning rev, F-VF, Ph | 25.00 | 26.00 |
| 294 | 131 perfin reading up, nice appearance, sm cr UL, o/w F-VF+, Ph | 25.00 | 30.00 |
| 295 | 141perfin reading up & reversed, wr, toning rev, centered to B, nice appearance | 15.00 | 21.00 |
| OFFICIAL PERFORATED 'P' STAMPS | | | |
| 296 | 38 "P" lying on its back, lt cancel, VF, Ph | 15.00 | 15.00 |
| 297 | 38 "b" on its back, lt cancel, well centered, UL corner crs & sp, o/w VF | 10.00 | 4.50 |
| 298 | 38 "P" on its back (9.2mm spacing), lt cancel, lt rubs on a few perfs, pn rev, F | 12.00 | 7.50 |
| 299 | 39 "P" lying on its back, tissue on rev & HR, minor UR corner cr, o/w F+ | 12.00 | 13.00 |
| 300 | 52 "b" on its back, v lt cancel, centered to T, F+, Ph | 20.00 | 13.00 |
| 301 | 55 "q", Bal Hts CDS, clean, F-VF, Ph | 25.00 | 21.00 |
| 302 | 55 "q", cancel a bit heavy, sound, centered F | 15.00 | 17.00 |
| 303 | 60 "P" lying on its back, excellent centering, cancel a bit heavy, VF, Ph | 18.00 | 19.00 |
| 3042 | 105 "P", nice appearance, cr, o/w F+, AND 106 "q", tear UL, lt cancel | 10.00 | 9.00 |
| 305 | 108 "P" lying on its front, centered to R, F+ | 10.00 | 22.00 |
| 306 | 108 "b" lying on its front, corner bend, one sp, o/w F-VF | 10.00 | 8.50 |
| 307 | C7 "P", minor corner perf crease LR, fresh, lt cancel, F-VF | 8.00 | 12.00 |
| 308 | C13 "P" on its back, a few slightly blunt perfs, F-VF, Ph | 15.00 | 17.00 |
| 309 | C15 "P" on its front, lg thin, lt cancel, F+ appearance, Ph | 12.00 | 16.00 |
| 310 | C17 "b" on its front, F-VF+, Ph | 12.00 | 14.00 |
| 311 | C17 "P" on its back, corner cr & wrinkled perf, lg margins & nice appearance | 8.00 | 9.00 |
| OFFICIAL AIR POST STAMPS | | | |
| Cancelled-to-Order items are indicated by CTO in the description and by 'x' in the field next to the lot number. | | | |
| 312 | CO1 with vertically 'ribbed' gum, slightly trop OG & mild gum skips, NH, F+ | 7.50 | 9.00 |
| 3133 | CO1-CO3 w/ O/N postally used, fresh, sound, neat cancels, F+ centering, Ph | 20.00 | 22.00 |
| 3147 | CO1-CO7 CTO w/ O/N, 5¢ & \$1 NH, rest HMs, F+ set, Ph | 50.00 | 19.00 |
| 3157 | CO1-CO7 CTO w/ O/N; 5¢, 15¢ & 40¢ NG; rest w/ HM, well centered, F-VF, Ph | 32.00 | 9.50 |
| 3168 | CO1-CO7& CO14, OG, NH, F-VF, Ph | 105.00 | |
| 3178 | CO1-CO7 & CO14, OG, HM, F-VF+, Ph | 105.00 | |
| 318 | CO2 CTO w/ O/N, OG, HM, VF | 8.00 | 8.50 |
| 319 | CO2 CTO w/ O/N, OG, HM, F-VF | 5.00 | 3.00 |
| 320 | CO3 CTO w/ O/N, OG, NH, F-VF | 8.00 | |
| 321 | CO3 CTO w/ O/N, OG, HM, F-VF+ | 8.00 | |
| 322 | CO5 CTO w/ O/N, OG, NH, lg margins, VF, Ph | 12.00 | 8.50 |
| 323 | CO5 CTO w/O/N, OG, HM, F-VF | 8.00 | 5.00 |
| 324 | CO5 w O/A, CTO, DG, HR, F+ | 10.00 | 11.00 |
| 3253 | CO5-CO7 w/ O/N postally used, 30¢ SE at R, each w/ creasing, centered F+ & nice appearance, Ph | 20.00 | 11.00 |
| 326 | CO6 postally used w/ C of CANAL broken T, F-VF, Ph | 10.00 | 13.00 |
| 327 | CO6 w/ broken 'O' at T, SE, postally used, perfs just touch B, F | 10.00 | 12.00 |

| Lot No. | Description | Estimate | Sl.Prc. |
|---|---|----------|---------|
| OFFICIAL AIR POST STAMPS | | | |
| 329 | CO7 CTO w/ O/N, OG, NH, F-VF+ | 10.00 | 6.50 |
| 330 | CO9 CTO, NG, VF, Ph | 275.00 | 200.00 |
| 331 | CO9 lt CTO cancel, NG, F+, Ph | 275.00 | |
| 332 | CO10 CTO, OG, NH, minor gum skips, pn sign on gum, VF, Ph | 175.00 | 170.00 |
| 333 | CO10 CTO, NG, F-VF, Ph | 175.00 | 76.00 |
| 334 | CO11 postally used, strong perfs and even margins, F-VF, Ph | 65.00 | 24.00 |
| 335 | CO11 postally used, neat cancel, F-VF, Ph | 65.00 | |
| 336 | CO14 CTO w/ L of OFFICIAL over A1, OG, HM, F, Ph | 20.00 | 26.00 |
| OFFICIAL ORDINARY STAMPS | | | |
| 3377 | O1-O2, O4-O7 & O9, OG, some heavy HMs, each F+ or better | 77.25 | |
| 338 | O2 w/ L/A (not listed), OG, NH, F-VF, Front Ph | 50.00 | 62.00 |
| 339 | O3 CTO, OG, HM, VF | 32.50 | 38.00 |
| 340 | O3 CTO, NG, VF | 32.50 | 17.00 |
| 341 | O8, pistine OG, NH, F, Ph | 650.00 | 320.00 |
| 342 | O9, OG, NH, VF, Ph | 13.50 | 15.00 |
| POST OFFICE SEALS | | | |
| 343sh | OX3 sheet of 25, purple shade, pos 22 shows large dot under H of THE, minor sep & edge wear, F-VF | 100.00 | 58.00 |
| 344sh | OX4 sheet of 20, large wing margins T & L, toned spots affect several, F | 180.00 | 52.00 |
| PROOFS & SPECIMENS | | | |
| A checklist of CZ Specimens appears in issue #117 (Fourth Quarter, 1995) of <i>The Canal Zone Philatelist</i> . | | | |
| 345 | O1.P1 proof of the small-size Official op, off-white, F-VF | 10.00 | 7.50 |
| 346 | 31 w/ 14mm red Specimen (only 98), OG, NH, perfs just cut T | 25.00 | 8.50 |
| 3474 | 31-34 Specimens, 1¢ & 8¢ 20mm, rest 14mm, OG, NH, 1¢ perfs cut T, others F+ | 40.00 | 23.00 |
| 348 | 32 Specimen (early prt), OG, NH, F-VF+ | 15.00 | 13.00 |
| 349B4 | 32 Specimen block (early prt), OG, NH, F-VF+, Ph | 60.00 | 42.00 |
| 350 | 33 Specimen (late prt), OG, NH, F | 15.00 | 12.00 |
| 351B4 | 33 Specimen block (late prt), OG, NH, perfs touch inscript, F+ | 80.00 | 25.00 |
| 352 | 34 Specimen, OG, NH, perfs into B inscript, F | 20.00 | 7.50 |
| 353 | 36 Specimen, OG, NH, F+ | 20.00 | 7.50 |
| 354 | 36 Specimen, OG NH, F+ | 20.00 | 7.50 |
| 355 | 37 Specimen, OG, NH, F | 20.00 | 15.00 |
| 356 | 37 Specimen, OG, NH, F | 20.00 | 15.00 |
| 357 | 38 Specimen (13.8mm), OG, NH, VF, Ph | 25.00 | 11.00 |
| 3584B | 38-41 four well-centered blks, Specimen types respectively 13.8mm red, 13.8mm blue, 20mm red early, 14.1mm red, OG, NH, Ph | 300.00 | 180.00 |
| 359 | 39 20mm blue Specimen (early prt), OG, NH, F+ | 15.00 | 13.00 |
| 360 | 39 20mm red Specimen, OG, NH, F-VF | 15.00 | 13.00 |
| 361 | 39 14.2mm blue Specimen, OG, NH, F+ | 15.00 | 13.00 |
| 362 | 39 14.2mm red Specimen, OG, NH, F | 15.00 | 7.50 |
| 363 | 40 14.2mm red Specimen, OG, NH, F-VF | 15.00 | 9.50 |
| 364 | 40 20mm red Specimen (early prt), OG, NH, perf close T & R, F | 15.00 | 9.50 |
| 365 | 41 Specimen, OG, NH, one blunt perf T, o/w F-VF | 15.00 | 11.00 |
| 366 | 49 Specimen, OG, NH, F+ | 15.00 | 13.00 |
| 3673 | 49-51 Specimens, OG, NH, F+ centering on 12¢ & 15¢, VF+ centering on 24¢, Ph | 75.00 | 76.00 |
| 368 | 52 13.8mm Specimen, OG, NH, F+ | 15.00 | 9.50 |
| 369 | 52 14.2mm Specimen, OG, NH, F+ | 15.00 | 9.50 |
| 3703 | 52-54 Specimens, 13.8 mm, 14.2mm & 13.8mm, 5¢ perfs close, OG, NH, F+ | 60.00 | 60.00 |
| 371 | 55 Specimen, OG, NH, F | 15.00 | 8.50 |
| 3723 | 55-57 Specimens, 11.2mm on 2¢, OG, NH, F+, Ph | 75.00 | 23.00 |
| 373 | 56 13.7mm Specimen, OG, NH, F+ | 15.00 | 8.50 |
| 374 | 58 Specimen, OG, NH, F-VF, Ph | 50.00 | 48.00 |
| 375 | 58 Specimen, OG, NH, F+, Ph | 40.00 | 30.00 |
| 3762 | 58 (XF) & 59 (perfs touch R) Specimens, OG, NH, Ph | 125.00 | 52.00 |
| 377 | 59 Specimen, OG, NH, several blunt perfs L, o/w F+, Ph | 30.00 | 10.00 |
| 378 | 59 Specimen, OG, NH, F, Ph | 30.00 | 30.00 |
| 3792 | 60-61 Specimen, OG, NH, F-VF+ | 30.00 | 23.00 |
| 3807 | 60-66 Specimens, OG, NH, 10¢ perfs touch B, 50¢ perfs close T, o/w F-VF, Ph | 150.00 | 160.00 |
| 381 | 60 Specimen, OG, NH, perfs cut B from | 15.00 | 7.50 |

| Lot No. | Description | Estimate | Sl.Prc. |
|---|---|----------|---------|
| PROOFS & SPECIMENS | | | |
| 382 | 64 Specimen, OG, NH, F-VF+, Ph | 25.00 | 13.00 |
| 383 | 65 Specimen, OG, NH, F+ | 20.00 | 13.00 |
| 3847 | Unissued Coat-of-Arms set Specimens, OG, NH, centering: 5¢ & 10¢ F, 50¢ & \$1 VF, rest F-VF, Ph | 300.00 | 280.00 |
| 3853 | J4-J6 Specimens, 1st two 19.8mm & VF, 10¢ 13.7mm & F, OG, NH, Ph | 125.00 | 125.00 |
| 3862 | J8-J9 Specimens, 14.2 mm & 14.3 mm respectively, OG, NH, F+ | 40.00 | 17.00 |
| 387 | Unissued 4¢ Type II Specimen (J8A.S in checklist), OG, NH, lg margins, VF+, Ph | 25.00 | 14.00 |
| 388 | J11C Type V op Specimen, OG, NH, F-VF, Ph | 30.00 | 32.00 |
| 389 | J11C Type V op Specimen, OG, NH, diagonal cr, centered VF | 15.00 | 13.00 |
| PRECANCELS | | | |
| 390 | Type I: 93 inverted precancel, perfs touch at B, sound & fresh, Ph | 15.00 | 21.00 |
| 3912 | Type I: 93(2): 1) precancel reading up, perfs close, 2) precancel reading down, perfs cut R, sound, F | 20.00 | 22.00 |
| 392B4 | Type I: 93 blk, SE at T, ironed-out creases on all, F+ centering, Ph | 35.00 | 64.00 |
| 3938 | Type I: 105(dam), 106, 107(SE), 108(SE, SRC Jul 38), 109(perfs cut, SRC Jul 38), 111, 112, 113, F+ group | 16.00 | 21.00 |
| 3949 | Type I: 105-109 & 111-114, 30¢ scraped, a couple of blunt perfs, o/w F-VF+ group | 25.00 | 26.00 |
| 395 | Type I: 108 inverted precancel, perfs cut T & R, sound & clean, Ph | 10.00 | 15.00 |
| 3964 | Type I: 108, 109, 111 & 112, minor faults, F group | 8.00 | 3.50 |
| 3973 | Type I: 117-119, each F+ | 5.00 | 17.00 |
| 3984 | Type I: 120 (wrs, perfs close L), 121 (bleached spot), 127 (VF+), 131(F+), Ph | 15.00 | 25.00 |
| 399 | Type I: 133, minor wrinkling, well centered, F-VF | 10.00 | 10.00 |
| 400 | Type II: 120, lt corner cr UR, strong perfs & fresh, F+ | 5.00 | 7.00 |
| 4015 | Type III-Orig Plate: 108, 109, 112-114, a few blunt perfs, F+ group | 7.00 | 11.00 |
| 4026 | Type III-1st Replace Plate: 105, 106, 109(SE), 117, 118 & 139, F+ | 6.00 | 8.00 |
| 403 | Type III-2 - 1st Replace Plate: 140 tiny scuff & lt toned spots, perfs close T | 10.00 | 12.00 |
| 404 | Precancel proof on thin white paper, P.PC III-2b, horiz bend, o/w VF | 10.00 | 6.50 |
| 4059 | Type IIIb - 2nd eplace Plate: 105, 108, 111- 113, 117, 138 & 139, OG, NH, F-VF plus 139 w/ SRC Oct 69, NG, VF | 6.00 | 11.00 |
| 406 | Type III-3 - 2nd Repl Pl: 110, SE at R, perfs cut T, tiny lt scuff, nice appearance | 8.00 | 11.00 |
| 407B6 | Type III-3 - 2nd Repl Pl: blk 6 w/ SRC type IV Jan 62, tr LL stamp, o/w F-VF | 10.00 | 22.00 |
| The next seven lots are full panes of the THIRD replacement plate. See the article in CZP issue 143, p 34. | | | |
| 408sh | Type III-4 - Third Replace Plate: 105 full pane of 100 (UL, pl #121473, shiny gum) showing even printer's rules & shift on pos 77, VF | 25.00 | |
| 409sh | Type III-4 - Third Replace Plate: 108 full pane of 100 (UR, pl #123709, shiny gum) showing even printer's rules & shift on pos 77, VF | 25.00 | |
| 410sh | Type III-4 - Third Replace Plate: 111 full pane of 100 (LR, pl #123710, shiny gum) showing even printer's rules & shift on pos 77, VF | 25.00 | |
| 411sh | Type III-4 - Third Replace Plate: 112 full pane of 100 (UL, pl #165887, shiny gum) showing even printer's rules & shift on pos 77, VF | 25.00 | |
| 412sh | Type III-4 - Third Replace Plate: 113 full pane of 100 (LL, pl #141629, shiny gum, drilled hole to L of pos 1) showing even printer's rules & shift on pos 77, VF | 25.00 | |
| 413sh | Type III-4 - Third Replace Plate: 138 full pane of 100 (UR, pl #160822, dull gum) showing even printer's rules & shift on pos 77, VF | 25.00 | |
| 414sh | Type III-4 - Third Replace Plate: 139 full pane of 100 (LR, pl #158038, shiny gum) showing even printer's rules & shift on pos 77, VF | 25.00 | |
| 4157 | The preceding seven lots combined, being a complete run in full sheets of all the issues reported w/ the Third Replacement Plate | 175.00 | 210.00 |
| 416 | Type IV: 107 SE at L, SRC Nov 45, fresh, lt diag 'crease' (pre-printing?) not visible from front, sm corner cr LR, o/w F-VF, Ph | 35.00 | 32.00 |
| 417 | Type IV: 107, SRC Oct 47, ironed-out wrinkles, perfs close R, F+, Ph | 25.00 | 32.00 |
| 418 | Type IV-2nd Plate: 141, NH, F-VF+, Ph | 10.00 | 15.00 |
| REVENUES | | | |
| Used Panama liquor revenues for the Zone were removed from bottles. At least some minor wrinkling occurs on all used copies. Grading in this section has been adjusted accordingly. | | | |
| 419 | R9 carmine, v. minor wrinkling, all perfs intact, VF, Ph | 12.00 | 16.00 |
| 420 | R9 carmine Litros, some wrinkling, F | 8.00 | |
| 421 | R10 black Litros, moderate wrinkling, F-VF | 12.00 | 6.50 |
| 422 | R13 rose red, minor wrinkling, VF, Front Ph | 18.00 | 25.00 |

| Lot No. | Description | Estimate | Sl.Prc. |
|------------------------------------|---|----------|----------|
| POSTAL STATIONERY ENVELOPES | | | |
| 423 | U2(UPSS 2), Bal Hts 3/15/27, very late use - allowed because of bears printed corner card, a bit wrinkled, F | 25.00 | 16.00 |
| 424 | U2 (UPSS 2) clear Ft Amador Hs-11 4/16/18 (early period), vert fold middle, sm nip off back flap, o/w F, UPSS \$25 | 25.00 | |
| 425 | U2 (UPSS 2), clear Paraiso Hs-11 6/5/17, It overall toning & sm edge crs, F+ | 25.00 | 11.00 |
| 426 | U2a (UPSS 2a), Cris Paquebot P-1 10/10/18, interesting magenta Navy censor box, a little doggy, F | 45.00 | |
| 427 | U2 carmine (UPSS 2) on miscut envelope, indicia .75" from edges, sm black mark center L, It wrinkles, toned edges, mounting stains on rev, Ph | 200.00 | |
| 428 | U4 (UPSS 4) Cris mc 2/16/23, It cancel, It wrinkling, F+, UPSS \$100, Ph | 125.00 | 56.00 |
| 429 | U4 (UPSS 4), Balboa 11/18/22, Knights of Pythias cc, mild edge creases, F+, UPSS \$100, Ph | 125.00 | |
| 430 | U5 w/ falling feather (UPSS 5a), It "The Panama Canal" Hs-11 1/5/23, It overall toning & mild bend T of indica, still a nice used example of the variety, F+, Ph | 250.00 | 160.00 |
| 431 | U7, sm corner cr UR, o/w F-VF, UPSS \$50 | 30.00 | 9.50 |
| 432 | U7 (UPSS 7a) open C, It pn mark UL, minor bend, F-VF, Ph | 150.00 | 56.00 |
| 433 | U7 w/ open C (UPSS 7a), F-VF, Ph | 150.00 | 76.00 |
| 434 | U9, bold Ft Davis Hs-11 5/22/30, vert cr L, corner cr LR, minor bump R edge near indicia, F+, UPSS \$20 | 15.00 | |
| 435 | U9 w/ Cris cc (UPSS 11), very minor even toning, o/w clean & VF, Ph | 60.00 | 26.00 |
| 436 | U9 (UPSS 10) w/ gen request corner, VF+, Scott \$27.50 w/o cc, Ph | 50.00 | 26.00 |
| 4372 | U10-U11 official business, long penalty env, VF | 24.00 | 8.50 |
| 438 | U11 (UPSS 25) legal-size w/ 105(2), Bal 1/27/43, minor edge toning & bumps, F-VF, Ph | 50.00 | 21.00 |
| 4392 | U11 regular & penalty (UPSS 29 & 29p), each VF+ | 16.50 | 7.50 |
| 4402 | U17(2) (UPSS 59 & 60), VF, Scott \$2.50 | 100.00 | 26.00 |
| 4412 | U17 twice: 1) UPSS 55 w/ 138, Marg. mc 7/8/69, 2) UPSS 56 w/ 105, Curundu Hs 3/17/69, both commercial use, clean, F-VF | 7.00 | 9.50 |
| 44210 | U18 (5 diff) & U19 (5 diff), UPSS #61, 63, 65-69, 71, 75 & 77, 2 legal-size w/ edge crs, rest F-VF+ | 117.50 | 19.00 |
| 4433 | 3 legal size postally used: UC10 toning & edge tears, UC12 w/ C48 & 105 minor edge creases, UC14 w/ 30¢ in stamps for insurance, F+ lot, Ph | 20.00 | 17.00 |
| 444 | UF1a large size w/ 9.2mm spacing (UPSS R4), usual natural paper creases on rev from manufacture, clean, VF, UPSS \$1,750, Ph | 1,300.00 | 1,400.00 |
| 445 | Rejected CZ registration envelope, two 1¢ green Panama stamps, pin hole LL, minor edge wear, F-VF, Ph | 150.00 | 360.00 |
| 4462 | UC10 & UC12 (legal size) commercially used solo, 10¢ folded L, 11¢ two sm edge tears TL, still about F+ for these | 12.00 | 11.00 |
| POSTAL STATIONERY CARDS | | | |
| 447 | UX1(S1), fresh & clean, VF+, UPSS \$50 | 40.00 | 46.00 |
| 448 | UX1(S1), sm inclusion TL, clean, VF, UPSS \$50 | 40.00 | |
| 449 | UX1 clear Paraiso Hs-11 11/30/08, UL corner It wrinkles, a few edge bumps, F, UPSS \$35, Ph | 25.00 | 19.00 |
| 450 | UX1 Gorgona Hs-11 4/19/07 w/ nice Tabernilla RC-4 on face, minor edge toning but overall clean & F-VF, UPSS \$30, Ph | 25.00 | 32.00 |
| 451 | UX1d(S2), edges bumped & a little dirty, F+, UPSS \$250, Ph | 250.00 | 66.00 |
| 452 | UX2(S3), fresh & clean, VF+, UPSS \$200, Ph | 190.00 | 65.00 |
| 453 | UX2 w/ broken O (S3c), fresh, clean, VF+, UPSS \$225, Ph | 190.00 | 170.00 |
| 454 | UX2 Type I w/ broken O (UPSS S3c), It Bas Obispo Hs-11 11/24/09, It overall toning, UL corner cr, F, Scott \$80, Ph | 125.00 | 95.00 |
| 455 | UX2(S4), bumped lightly near indicia, F-VF, UPSS \$200 | 190.00 | 36.00 |
| 456 | UX2 (S7) w/ #31, It Ancon 6/18/11, minor corner bumps, F-VF, UPSS \$175, Ph | 80.00 | 42.00 |
| 457 | UX3(S6), It toning from mount LL, tiny flecks near indicia, F+, UPSS \$200 | 190.00 | 48.00 |
| 458 | UX3 w/ broken Z (S6b), VF, UPSS \$200 | 190.00 | 72.00 |
| 459 | UX4(S10), VF, UPSS \$150, Ph | 160.00 | 70.00 |
| 460 | UX4(S10) Gatun 10/17/14, a bit toned, F+, UPSS \$100 | 60.00 | 32.00 |
| 461 | UX4 (S10), Cris 1/2/14 to Germany w/ #38, F-VF, UPSS \$100, Ph | 60.00 | |
| 462 | UX4 (S10), pressure from Cris mc 1/16/15 'embosses' card, o/w neat, clean & F-VF, UPSS \$100 | 60.00 | 12.00 |
| 463 | UX4 (S11), Gatun 10/2/22, a bit faded, F-VF, UPSS \$75, Ph | 60.00 | 18.00 |

| Lot No. | Description | Estimate | Sl.Prc. |
|---|---|----------|----------|
| POSTAL STATIONERY CARDS | | | |
| 464 | UX5 (S12), noticeable UR corner cr just clear of indicia, L corners bumped, lt.toned area center B, lt cancel, overall neat & clean appearance, UPSS \$500, Ph | 450.00 | 170.00 |
| 465 | UX6 (S13), Gatun 2/3/25, pre-printed meeting notice rev, hinge marks rev, 2 sm lt ink marks lower edge, F-VF, UPSS \$1,100, Ph | 1,100.00 | 1,050.00 |
| 466 | UX7 (S14), VF, UPSS \$100 | 85.00 | 48.00 |
| 467 | UX8 (S15), VF+, UPSS \$85 | 80.00 | 44.00 |
| 46825 | UX9-21 (S16-34) & UXC1-5 (SA1-6), VF group | 105.00 | |
| 4694 | UX10-UX12 & UX19, each used commercially, F-VF, Ph | 9.00 | 13.00 |
| 4704 | UX11-UX14, VF | 13.65 | 4.50 |
| 471 | UX13 w/ inverted surcharge (UPSS S22a), clean & VF, Ph | 750.00 | 850.00 |
| 472 | UXC1 w/ flaw above A (SA1a), VF | 25.00 | 13.00 |
| 473 | UXC1, Curundu mc 2/15/61, 'commercial' use, UR corner crease & other lt creases, nice appearance | 7.50 | 3.50 |
| 474 | UXC4 w/ 105 Bal hs 4/18/78 to Balboa, no message, VF, UPSS \$15, Ph | 16.00 | 12.00 |
| 475 | UXC5 Bal mc 2/16/76 to USA, no message, VF, UPSS \$15 | 15.00 | 12.00 |
| FIRST DAY COVERS INCLUDING POSTAL STATIONERY | | | |
| 476 | 107 block tied by Bal Hts mc 6/25/29 to reg, blue hs'd 25th Anniv of CZPS, lt fingerprints (postal clerk?), o/w F-VF+, Ph | 20.00 | 5.00 |
| 477 | 119 pl #21878 blh UR bided by Bal Hts mc, UA, printed CA, F-VF | 12.00 | 13.00 |
| 478 | 120-135 plus C15-C20 on large env, each stamp F-VF or better, tied on reg to Scotland by FD-3a, minor edge crs do not affect stamps, neat, clean & VF, Ph | 250.00 | 180.00 |
| 4798 | 120-135, mostly diff CA makers used for complete set on 8 covers, stamps F-VF or better, pn Add exc 25¢ & 50¢ TA, neat & colorful, F-VF+, Ph | 132.50 | 32.00 |
| 48016 | 120-135 blocks on 16 covers, Crosby CAs w/ photo insets, stamps well centered and neatly placed, TA, minor faults on a few, clean & beautiful, F-VF+, Ph | 250.00 | 210.00 |
| 4817 | 139 on 7 covers: Ft Davis, Ancon, Ft Amador, Diablo Hts, Bal Hts, Marg & Cris; sm official hs CA, TA, F-VF | 14.00 | 14.00 |
| 482 | 141 Bal Hts FD-2 4/17/48 w/ signature of designer Mead Bolton & Dr. Zetek head of CZ Biological Area, UA, NC, VF | 20.00 | 13.00 |
| 483 | 146 Bal Hts FD-2 8/15/51, red Pent Art CA, UA, minor edge wrinkles, F-VF | 4.00 | 3.50 |
| 484 | 151 Bal FD-2a 2/8/60, multicolor Overseas Mailer CA, TA, VF | 3.00 | 2.00 |
| 4853 | 163 bklt panes, all three tab types each on legal-size, printed CA showing dredge, UA, crisp & clean, VF | 12.00 | 18.00 |
| 486 | 163 pl #173356 LR tied on legal-size card w/ 3" x 3" sunken lithograph, signed by Al Sprague (designer) w/ "28/33", also personalized note & 2nd signature, VF, Ph | 30.00 | 54.00 |
| 487 | C5a (F), tied by Cris mc 12/31/29, addressed to Roessler, F-VF, Ph | 60.00 | 62.00 |
| 488 | C6 Curundu mc 1/3/49 on local pc, F-VF | 5.00 | 2.50 |
| 48911 | C8 pairs on covers from 11 diff CZ towns, (Anc, Bal Hts, Cocoli, Coco Solo, Corozal, Ft Am, Gamboa, Gatun, Ped Mig, Rodman, Upham), NC, TA, clean, F-VF | 20.00 | 32.00 |
| 490 | C12 (VF), Anderson CA, neatly hand addressed in ink, F-VF+ | 22.50 | |
| 4917 | C15-C20 on sep covers w/ Evans CA (5¢ block & 10¢ pair), extra cover w/ 5¢ & 10¢, TA, all stamps well centered & sound, clean, VF, Ph | 105.50 | 70.00 |
| 492 | C32 Ft Gulick FD-2a on LR pl# blk, Smith CA, UA, VF | 5.00 | |
| 4934 | C50 matched set of pl # 168773/172229 blocks on four neat & clean covers, Bal mc 2/11/74, green prt CA, UA, VF+ | 25.00 | 36.00 |
| 4944 | C50 matched set of pl # 168773/172228 blocks on four neat & clean covers, Bal mc 2/11/74, green prt CA, UA, VF+ | 25.00 | 28.00 |
| 4954 | C50a full bklt panes on four covers, all four diff tabs, neat & clean, Bal mc 2/11/74, green prt CA, UA, VF+ | 30.00 | 25.00 |
| 496 | UXC4 Bal SI012 2/12/68, UA, NC, pn LR, F-VF | 6.00 | 3.00 |
| FIRST FLIGHT COVERS | | | |
| 497 | F5-2 franked w/ 88(VF) & 90(perfs touch T), Cris mc 2/10/20, hs'd blue CA, neat, VF | 15.00 | 17.00 |
| 498 | F5-8, C3 on lt yellow env, Cris 5/21/29, only 60 flown, clean, VF, Ph | 40.00 | 21.00 |
| 499 | F5-18a, C1(VF) on golden env, Cris 6/21/29, clean, F-VF+ | 10.00 | 7.50 |
| 500 | F9-26 Cris 7/16/29 ties C1(3), purple hs'd CA, Santiago bs, neat & clean, F-VF | 12.50 | |
| 501 | Incoming Guayaquil to Cris 5/4-6/29, 'courtesy' pre-inaugural cover, treated as paquebot, Cris P-1 on front, F-VF | 20.00 | 25.00 |
| 5023 | Three incoming FF to CZ: 1) F5-41 San Jose 3/11/30, fold across B, 2) F9-34 Santiago 7/27/29, 3) F-8-30 Guatamala 3/16/20, pn notations, F-VF | 17.50 | 21.00 |

| Lot No. | Description | Estimate | Sl.Prc. |
|------------------------------|---|----------|---------|
| FIRST FLIGHT COVERS | | | |
| 503 | C11 & 90 tied by Cris K-4 to reg cover, like L93 but to Virgin Isl, Cris Rg-20 11/18/31, hs 11/25/31 American Clipper CA, held for flight, colorful, F-VF, Ph | 50.00 | 26.00 |
| SPECIAL EVENTS COVERS | | | |
| 504 | Byrd Exp SS City of New York cancel ties 106, all-over green cachet (much clearer inking than usual) plus additional red CA in LR corner showing penguin & ice, It Byrd Exp dc, It Roessler hs address, not your typical Byrd cover!, F-VF, Ph | 40.00 | 8.50 |
| 505 | Last Day 2¢ letter rate, U8 & 105, Bal Hts mc 7/5/32, corner bends & It creases, F | 10.00 | |
| 506 | C10 tied by Coco Solo Hs-11 2/6/36, hs CA "1936 Advanced Base Operations", a.m. to Galapagos Isl, toning from env adhesive, F-VF, Ph | 25.00 | 32.00 |
| 507 | First Ocean-to-Ocean Aircraft Carrier Mail Service - Victory Loan Drive, Bal mc & Uss Salerno hs, cover #113, signed, top edge a bit toned & rough, F-VF, Ph | 40.00 | 23.00 |
| 508 | 50th Ann of Tivoli Hotel: 14 x U16 (Rodman, Marg, Paraiso, Cris, Bal Hts, Coco Solo, Ft Amador, Ft Clayton, Ft Davis, Gamboa, Gatun, Hw AFB, Diab Hts, Alb AFB) purple hs'd CA, UA exc Rodman hs add, F-VF | 28.00 | 36.00 |
| COVERS | | | |
| 509 | 4-8 It tied by K-1 w/ Ancon Hs-1a Dic 11, 1094, 5¢ perfs touch T, 8¢ SE at T, stamps sound & centered F, cover unaddressed, vert crease far L, F-VF, Ph | 500.00 | 180.00 |
| 510 | 6 (F-VF+), Empire Hs-1b 12/7/04 & K-1, purple Gorgona Hs-1 12/8/04, clean & fresh, VF, Ph | 250.00 | 210.00 |
| 511 | 9 tied by nice strike of Culebra Hs-2a 3/15/06 on Kohpeke pc "Ruinas del Coto de Jesuitas, Panama" rust area on stamp, o/w F-VF, Ph | 15.00 | 21.00 |
| 512 | 9 (F+) tied on face of photo pc (inscribed Culebra, C.Z..) by Ancon M-1 2/9/15 to Coveleski, F-VF, Ph | 15.00 | 32.00 |
| 513 | 9 (F-VF) tied by clear LaBoca Hs-2 (4-in-bars) 10/16/05 to Toledano ppc "Tipo de Indigena en Traje Nacional", Cris Rc-2 rev, bumped LR, VF, Ph | 40.00 | 56.00 |
| 5144 | Interesting postmarks on 4 distressed covers, 1) 11 (It scuff) Culebra Hs-2a 1/10/06, 2) 10 Ancon Sta A 5/26/06, 3) UX1 creases & toned San Pablo 1/27/08, 4) 39 Corozal 1/19/18 | 18.00 | 21.00 |
| 515 | 11.A.7 (2 PANAMAs R) (VF+), clear Cris Hs-2a 1/6/06, sm toned area, VF+, Ph | 40.00 | 56.00 |
| 516 | 16a tied by nice Ancon Sta A 7/26/06 to Kollpeke photo pc "Ruinas de Templo de Santo Domingo, F-VF, Ph | 20.00 | 16.00 |
| 517 | 16b (sound, perf cut T) tied by Paraiso 12/26/06 to leather pc showing "Office of the Chief Engineer", F-VF, Ph | 125.00 | 135.00 |
| 518 | 16b tied on face of Maduro ppc "Traveler's Palm", Paraiso Hs-11 1/14/14, F-VF | 15.00 | 18.00 |
| 519 | 22 (sm scuff on stamp, o/w F-VF) tied by RMS-1 type oval 10/30/10, undivided back ppc "Canal Bldg - Panama", F-VF | 10.00 | 16.00 |
| 520 | 22 (6.8mm spacing) clear Cris Sta A Hs-4 7/28 (prob 1909), perf tips & card a little toned, card a bit distressed B, a nice example of postmark, F-VF+, Ph | 125.00 | 160.00 |
| 521 | 22 (perf blunt & rubbed) tied by clear RMS-1a 6/7/09 Tr-2, F-VF, Ph | 15.00 | 32.00 |
| 5226 | 22 on six Maduro ppc from 1907-09, Ancon Sta A, Empire, Las Cas, Cris, Ped Mig (2), F exc Sta A is F-VF+, Ph | 35.00 | 28.00 |
| 523 | 23 6.8mm spacing (VF), LaBoca Hs-11 6/7/09 on ppc to Sweden, VF, Ph | 15.00 | 19.00 |
| 5244 | 31 (each F-VF) on four Maduros, 2 Ancon, Cris, Gatun, 1910-13, F-VF | 20.00 | 19.00 |
| 525 | 31 on two Maduro ppc, 1) Ancon mc 6/27/14, F-VF, 2) single from handmade bklt tied Las Cas 3/5/15, F | 8.00 | 8.00 |
| 526 | 31(11mm CANAL) strong strike Paraiso Hs-11 3/26/12, F+ | 7.50 | 3.50 |
| 527 | 31& 32(2) tied by Las Cas Hs-11 11/4/11 to Switzerland, F-VF, Ph | 20.00 | 16.00 |
| 528 | 31-35 set on front to Coveleski, Paraiso 5/22/191?, It toning on a few perf tips, neat F-VF presentation of Type I set, Ph | 75.00 | 110.00 |
| 529 | 32 (perfs touch T) on face of Maduro ppc "Tobacco Farm", Tabernilla 9/28/11, another clear strike on add side, F-VF | 20.00 | 32.00 |
| 530 | 32 on pic side of Maduro to Silesia (now Poland), Ancon 5/5/10, private hs of sender's add & "PRINTED MATTER" on message side, F-VF | 10.00 | 32.00 |
| 531 | 32 (2 pairs & 33 (pair) all 8.5mm spacing w/ 10.5 Canal, stamps w/creases & edge faults, tied by cord cancels & NY reg label to legal-size blue reg cover to London, faded Ancon Rg-7 8/29/10 on front, looks better than it sounds, Ph | 40.00 | 25.00 |
| 532 | 38 (F-VF) solo tied to unsealed 3rd-class envelope, Ancon 12/2/13, VF, Ph | 10.00 | 7.50 |
| 533 | 39 (oxidized) tied by Ft Randolph Hs-11, WWI Mil Censorship Box, toned, F+ | 25.00 | 11.00 |
| 534 | 39(VF) tied by It Empire Hs-11 10/17/18 w/ clear WWI Mil Censorship box ("No 148"), clean, F-VF+, Ph | 25.00 | 28.00 |

| Lot No. | Description | Estimate | Sl.Prc. |
|---------------|--|----------|----------|
| COVERS | | | |
| 535 | 39 8.5mm spacing from handmade bklt tied to sm cover Ancon 3/21/14, even margin & perfs on 3 sides, R side ragged edge from cutting of booklet, F-VF | 12.00 | 9.50 |
| 536 | 41 (F-VF) on U2, Culebra 4/19/19 reg rev, It WWI Mil Censorship hs box, F-VF | 40.00 | 32.00 |
| 537 | 42 on face of real photo pc w/ inscription "Scene of Gatun Lake, Panama Canal", stamp close to edge & perfs worn, Ancon mc 4/7/15 to Coveleski, clean | 17.50 | 34.00 |
| 538 | 43 (F-VF) Las Cas Hs-11 3/31/15 on Maduro pc w/ lg Goethals portrait w/ facsmile signature, sm edge staining, F-VF, Ph | 20.00 | 28.00 |
| 5392 | 60 Balboa Hs-11 7/12/22 on Maduro ppc & 61 Ancon M-1 7/27/22, F-VF | 21.00 | 9.50 |
| 540 | 77 (F-VF) & pair 72 tied Bal Hts Rc-4 1/18/26 to reg from pm, Bal Hts & Cris Rg-20 rev, clean, F-VF+, Ph | 50.00 | 42.00 |
| 541 | 99, 102, 71(5) on U13 (UPSS 32) reg to Switzerland, Bal Hts reg 12/23/32, bend along R edge, clean & F-VF, Ph | 40.00 | 42.00 |
| 542 | 102 & 111 on reg to US, Bal Hts reg 8/15/32 rev, a bit wrinkled at R, F | 10.00 | 5.00 |
| 543 | 105 tied by mute Bal Hts mc to unsealed 3rd-class to US, WWII purple round 'U. S. Censorship', Masonic cc, F-VF, Ph | 10.00 | 11.00 |
| 544 | 107, 108(SE) & 115 Ancon oval on local reg cover, Ancon & Cris reg 1/12/34 rev, F-VF, Ph | 25.00 | 36.00 |
| 545 | 111 tied by Cris 11/16/55 pay certified fee on philatelic cover w/ uncanceled US 15¢ certified mail stamp, block of 137, cert label, F-VF, Ph | 10.00 | 15.00 |
| 546 | 117 on ham radio pc to Bolivia, Cris mc 1/28/50, LaPaz receiver, clean, F-VF | 3.00 | 6.50 |
| 547 | 132 solo pays 15¢ reg fee & 3¢ postage on phil agency cover, order form enclosed, Bal Hts & Cris reg 1/22/41 rev, stained across B, o/w F-VF, Ph | 20.00 | 28.00 |
| 5486 | Six CZ ham radio postcards each mailed w/ 138, Ft Clayton (2), Coco Solo, Bal (2), Albrook AFB, a little doggy, F | 10.00 | 19.00 |
| 549 | 146 block (VF) on reg a.m. from Bal Hts pm to APO, rev Bal Hts & AMF Bal dc 2/5/52, APO receiver rev, F-VF | 10.00 | 12.00 |
| 550 | Three a.m. covers w/ commemoratives: 1) 147 pair 8/4/55, 2) C33 11/20/62, 3) 157 pair 1/24/66, clean, F-VF | 7.50 | 3.50 |
| 551 | 155 (2 pairs, VF), Bal Hts M-3 12/3/63 to E. Germany, correct rate, F-VF, Ph | 20.00 | 21.00 |
| 552 | 164a (tagged) strip of 3 tied by Howard AFB mc 9/10/79 to UA envelope, stamps F-VF centering, clean, VF, Ph | 75.00 | 85.00 |
| 553 | C1 (SE, toned perfs R) solo tied by Ancon mc 12/17/30 to commercial a.m. to Ecuador, bs Guayaquil & Quito, correct rate, clean, VF, Ph | 40.00 | 64.00 |
| 554 | C1, C3 pair (perf cut R) & C4 on flown Zeppelin card from Cris to Germany via NY, Cris 5/22/30 ties CZ stamps, w/ US 65¢ airmail tied by NY 5/29/30, It corner crs UL & LL, neat & colorful, VF, Ph | 1,500.00 | 1,400.00 |
| 555 | C3 tied by Cris 11/14/29 to blue comm SCADTA cover from Bogata, UR corner cr affects one Colombian stamp, clean & neat, F-VF, Ph | 20.00 | 28.00 |
| 556 | C5 (F+) on comm SCADTA cover, Colombia to Costa Rica, Cris 9/16/30, CR receiving rev, F-VF | 12.00 | 42.00 |
| 557 | C6, C9, C11(2), C13 & C14, lightly cancelled by Cris Hs-11 2/1/32, all stamps F-VF, clean, VF, Ph | 40.00 | 50.00 |
| 558 | C7, C9 (SE), C10 (SE), C11 on Euro size to France, Cris Hs-11 8/11/35, F-VF, Ph | 12.00 | 13.00 |
| 5592 | C9 & C10 pay a.m. rate to Bogota (Cris 2/12/38) & C13 (SE) pays 40¢ a.m. rate to Buenos Aires (Ancon 1/5/45), each toned, F+, Ph | 28.00 | 11.00 |
| 560 | C10 & 15¢ US Spec Del on a.m. to Texas, Bal 5/9/41, backstamped Spec Del service in Texas, a little toned, F-VF, Ph | 15.00 | 22.00 |
| 561 | C14 (F-VF) solo tied Bal mc 4/1/35 to neat philatelic cover to US, VF, Ph | 35.00 | 34.00 |
| 562 | C16 & C11, Ancon Hs-11 11/26/-- w/ written "AIRMAIL/ Special Delivery", F+ | 8.00 | 21.00 |
| 5633 | Three a.m. cover to Europe w/ correct rates: 1) C23 pair Bal mc 7/27/61, 2) C17 & 117 uprating UC4 Bal Hts mc 12/19/60, 3) C46 & 139 Bal mc 4/20/76, F-VF | 18.00 | 13.00 |
| 564 | C21(F-VF) used on Return Receipt form from NY 3/10/58, proper extra-territorial use to obtain air mail response to Registered mail from Balboa, F-VF, Ph | 15.00 | 20.00 |
| 565 | C29 (F-VF) Ancon mc 9/15/60 on CZSP announcement card (Finder #21) to Australia, HR on rev, proper rate, F-VF+, Ph | 20.00 | 42.00 |
| 566 | C32 blk pays 60¢ reg fee on UC4, Bal dc 12/27/61 rev, F-VF+ | 12.00 | 15.00 |
| 567 | C35 & pair 136 pay double a.m. rate to US, Bal 11/23/63, a bit wrinkled, | 8.00 | 3.50 |
| 568 | C47 & 111 tied by Ft Amador roller RI-1 to reg legal-size UC14, 95¢ reg fee, minor edge creases, clean, Ft Am DC-10 rev 6/6/73, F-VF+, Ph | 20.00 | 21.00 |
| 569 | CO14 (SE T & R, pulled perfs, Diablo Hts 4/11/49 on legal size to US, F+, Ph | 50.00 | 34.00 |
| 570 | J25 (F-VF), J26 (F) & J27 (perf cut T) tied by It Cris K-4 to rev of short paid a.m. from Canada, folded betw stamps & opened rough R, still F-VF, Ph | 60.00 | 76.00 |

| Lot No. | Description | Estimate | Sl.Prc. |
|---|--|----------|---------|
| COVERS | | | |
| 571 | J18 pl #13844 T tied to phil cover, a bit toned, Ancon 5/25/29 ties 72, F+, Ph | 50.00 | 26.00 |
| 5726 | Six foreign destination covers w/ correct a.m. rates: 15¢ pc to Canada (1969), 25¢ to Germany (1969), 30¢ to Norway (1973), 35¢ to England (1974), 22¢ aerogram to Poland (1977), 35¢ to Argentina (1979), two legal size, F-VF group | 25.00 | 46.00 |
| 57320 | 200 covers & postcards, most comm use w/ some FDCs, most 1950-79, mixed condition, one third large size, some interesting items, wide range of postmarks | 100.00 | 135.00 |
| APO AND NAVY COVERS | | | |
| 574 | APO 828 mc w/ censor box (00373) on "FREE/(Official War Ballot)" pc to Washington state, application for ballot, F-VF, Ph | 20.00 | 7.50 |
| 5757 | Seven diff APO numbers in postmarks: mc of 825, 827, 828 & 832; handstamps of 829, 836 & 837; most a bit doggy, F+ group | 12.00 | 22.00 |
| 5765 | Five diff APO numbers in ret address: 827, 828, 834, 835 & 836, all handstamps, a bit doggy, F group | 8.00 | 15.00 |
| 5773 | Three US Navy postmarks w/ ret add: 1) Patrol Wing Three, NAS, Coco Solo, 2) Naval Hosp, Coco Solo, 3) Fleet PO, Balboa, F-VF group | 8.00 | 13.00 |
| OTHER COVERS & PHILATELIC ITEMS | | | |
| 578 | Clear NY & Canal Zone RPO SP-2 12/9/09 North tied 1¢ Panama stamp to photo pc w/ three scenes, VF, Ph | 20.00 | 22.00 |
| 579 | US return receipt for Reg Article, unclear Ancon Hs-11 12/7/20, F+, Ph | 8.00 | |
| 580 | Incoming a.m. reg cover from Honduras, pretty Tela "use el correa aereo" on rev w/ Cris reg bs 10/17/29, VF | 18.00 | |
| 581 | Spec Del on ship cover, USS Wyoming hs w/ Balboa Canal Zone in killer bars 3/12/26 tied US 2¢(2, damaged) & 10¢ blue US spec del, a bit ragged at T, F+, Ph | 30.00 | 64.00 |
| 582 | "Problem 20, Canal/Zone & Caribbean '39" purple handstamp, pair US 1.5¢ prexies tied by undated Hawaii roller, addressed to Calif, consigner describes as scarce crash cover but we have no other info concerning it, w/ printed CA listing battle ships in Spanish Amer War in Cuba, clean, VF, Ph | 50.00 | |
| 583 | CZPS Ann. Card, Finder C1, "O" dropped (UPSS S19pa), Bal 5/16/61, cr UL, F | 25.00 | 16.00 |
| 584 | UX11 Official Business (UPSS S19p), Bal mc 10/5/61, announcement card for 15¢ (C32) air mail (Finder C-2), VF | 20.00 | 17.00 |
| 585 | CZPS Announcement Card, Finder C3, "O" dropped (UPSS S19pa), Bal 1/6/62, pen notes rev, o/w VF, Ph | 25.00 | 26.00 |
| 586 | CZPS Announcement Card, Finder 48, unused, VF | 7.00 | 5.50 |
| 5874 | Used CZPS forms: 1) two receipts for insured parcels, 2) receipt for PO Box payment, 3) facing slip for mail to Cris, F-VF | 6.00 | 8.50 |
| PHILATELIC LITERATURE & CATALOGS | | | |
| 588bo | Postal Markings of the Canal Zone, 2nd ed, by Entwistle, 328 pp, like new | 10.00 | 15.00 |
| 589bo | Canal Zone Stamps by Plass, Brewster & Salz, 1986, 345 pp, hb, new | 50.00 | 42.00 |
| 590bo | Canal Zone Stamps, ditto, like new | 50.00 | 40.00 |
| PICTURE POSTCARDS | | | |
| 591 | "Unloading a Ship-load of Lumber...", Maduro No 72c, brown-ink back, F-VF | 5.00 | 3.00 |
| 592 | "Slide in Culebra Cut....", "Published at Post Card Headquarters...." clean, F-VF | 5.00 | 3.00 |
| 5934 | Four cards showing the murals in the Admin Building: Gaillard Cut, The Making of the Lock Gates, Miraflores Locks, the Making of the Spillway, beautiful & VF | 20.00 | 21.00 |
| CANAL ZONE MEMORABILIA | | | |
| 594pr | Large double-page print ("20 x 14") of "The Great Culebra Cut - Drawn by Charles Graham from Photographs" from 1885 issue of Harpers Weekly, vert fold in middle as issued, clean & VF | 20.00 | 21.00 |
| 595 | Panama Railroad spike mounted on piece of old RR tie, plaque says "Original Tie 1853-1869/Spike 1910" | 40.00 | 62.00 |
| 596 | 20 diff CZ ham radio QSL cards 1963-79, 6 used / CZ stamps to US, all w/ diff cancels, bet 1964-74, F-VF | 40.00 | 62.00 |
| 5975 | Five blank CZ certificates for various safety awards, clean & VF | 5.00 | 2.50 |
| 5988 | Eight blank CZ certificates for various safety awards, clean & VF | 8.00 | 2.00 |
| 5996 | Six 9" x 6.25" sepia prints of construction work, text on rev, pretty & VF | 24.00 | 19.00 |
| 6005 | Five 9" x 6.25" sepia prints of construction work, text on rev, pretty & VF | 20.00 | 30.00 |
| 60124 | 24 misc paper items: pamphlets, maps, labels postcard packet, menus, coupon books & other interesting stuff, several surprising items! | 20.00 | 40.00 |

| Lot No. | Description | Estimate | Sl.Prc. |
|-------------------------------|---|-----------------|----------------|
| CANAL ZONE MEMORABILIA | | | |
| 602 | "Gorgona Election Ballot... November 5, 1912" with apparent totals of votes cast per candidates: Taft, Wilson, Debs, Roosevelt plus local offices (Debs won there!), folded, unusual, F-VF, Ph | 15.00 | 44.00 |
| 603bo | The Panama Canal in Peace and War, Padeford, hb, 327 pp w/ several foldout maps/charts, VF | 15.00 | 16.00 |
| 604 | Goethals signature dated 12/22/17 on his business letterhead, "I will be glad to drop in and discuss the subject of the Hudson River Tunnel with you." | 40.00 | 64.00 |
| 605 | "Modern Marvels: Panama Canal", History Channel VHS tape, sealed, 50 min | 5.00 | 8.50 |
| 606pr | Colorful illustrated 24" x 17" map of Panama & Canal Zone, "Official Army Souvenir", produced by "USARCARIB Engineer C.Z. Feb 60", not folded & very suitable for framing, VF | 8.00 | 22.00 |